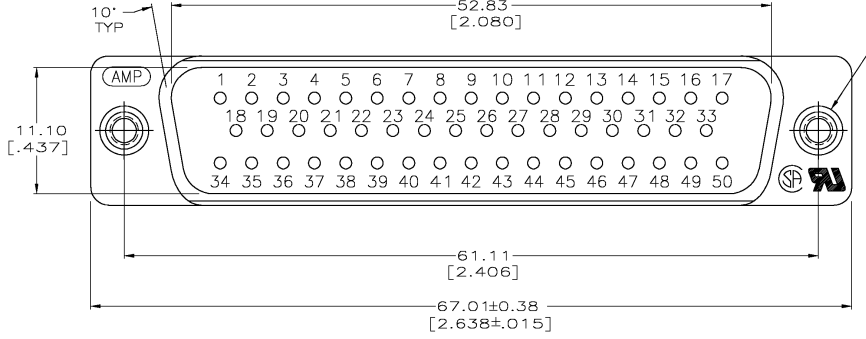
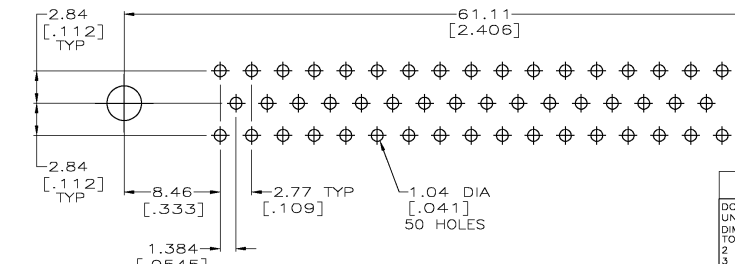
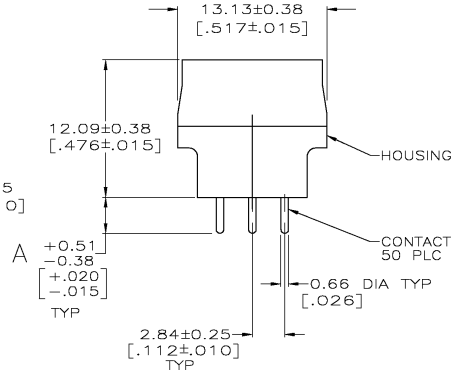
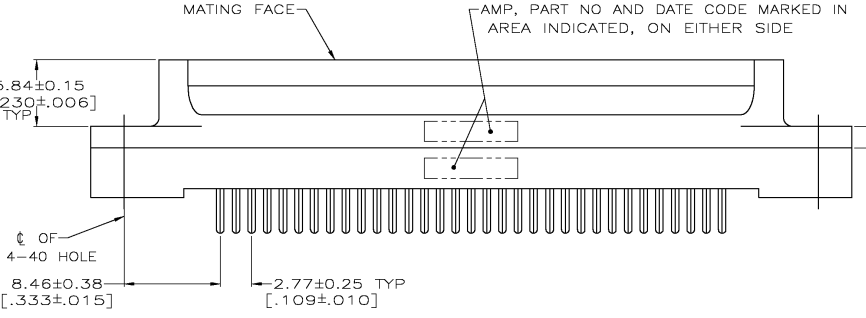


DRAWING MADE IN THIRD ANGLE PROJECTION
 THIS DRAWING IS UNPUBLISHED. RELEASED FOR PUBLICATION .19
 © COPYRIGHT 19 BY AMP INCORPORATED. ALL INTERNATIONAL RIGHTS RESERVED.

LOC				REVISIONS				
GP	DIST	P	F	ZONE	LTR	DESCRIPTION	DATE	APPD
GP	00				H	REACTIVATE -1 PER 0S11-0004-04	08/04/04	CC



- △ HOUSING: BLACK POLYESTER, UL 94V-0 RATED; CONTACT: BRASS PER MIL-C-50; INSERT: BRASS PER QQ-B-626.
- △ GOLD PLATING PER MIL-G-45204, TIN PLATING PER MIL-T-10727, NICKEL PLATING PER QQ-N-290.
- △ GOLD PLATED FOR A LENGTH OF 3.81 [.150] MIN FROM MATING END, GOLD FLASH IN MATED AREA, 2.54 μm [.000100] MIN TIN OR TIN-LEAD FOR A LENGTH OF DIMENSION A FROM OPPOSITE END, ALL OVER 1.27 μm [.000050] MIN NICKEL.
- △ GOLD PLATED FOR A LENGTH OF 3.81 [.150] FROM MATING END, 0.76 μm [.000030] MIN GOLD IN MATED AREA, 2.54 μm [.000100] MIN TIN OR TIN-LEAD FOR A LENGTH OF DIMENSION A FROM OPPOSITE END, ALL OVER 1.27 μm [.000050] MIN NICKEL.



RECOMMENDED PC BOARD MOUNTING DIMENSIONS

OBSOLETE	6.35	[.250]	△	△	745055-6
OBSOLETE	6.35	[.250]	△	△	745055-5
OBSOLETE	4.32	[.170]	△	△	745055-4
OBSOLETE	4.32	[.170]	△	△	745055-3
OBSOLETE	3.18	[.125]	△	△	745055-2
OBSOLETE	3.18	[.125]	△	△	745055-1

DO NOT SCALE PRINT. UNLESS SPECIFIED DIMENSIONS IN mm [INCHES] TOLERANCES ON: 2 PLC DEC ± 0.13 [.005] 3 PLC DEC ± - ANGLES ± 2°	DR 11-15-89 J McCLINTON CHK 2-1-90 R STONE APPD 2-2-90 S SCHEFFERLY	AMP AMP INCORPORATED Harrisburg, Pa. 17105	NAME	PLUG ASSEMBLY, SIZE 5, 50 POSN, VERTICAL, AMPLIMITE® HD-20
MATERIAL	APPD 2-2-90 C.ROHDE PRODUCT SPEC 108-40025		SIZE	C 00779
FINISH	APPLICATION SPEC	DRAWING NO	745055	
CONTACT: SEE TABLE	WEIGHT	SCALE	4:1	SHEET 10F 1

CUSTOMER DRAWING