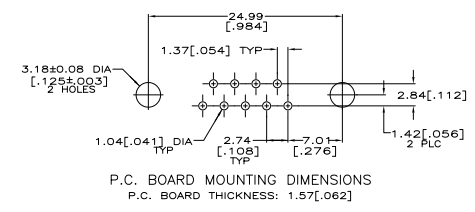
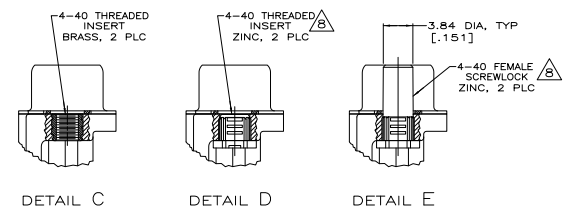
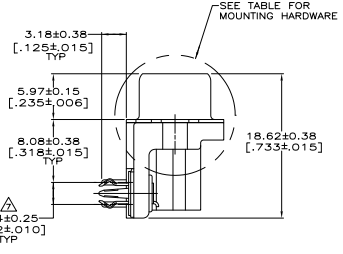
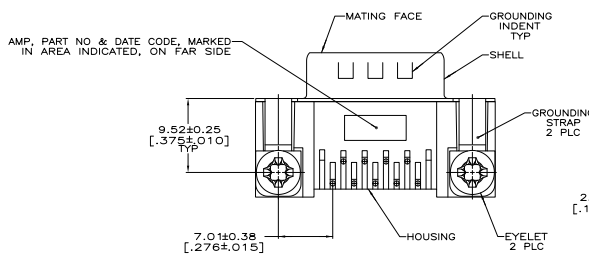


- △ HOUSING: NYLON OR POLYESTER, FLAME RETARDANT 94V-0 RATED, GLASS FILLED, BLACK
- △ SHELLS: CARBON STEEL
- △ CONTACTS: BRASS
- △ BOARDLOCKS: COPPER ALLOY
- △ EYELETS: BRASS
- △ SHELLS: 2.54µm[.000100] MIN TIN OVER 1.27µm[.000050] MIN COPPER.
- △ EYELETS: 5.08µm[.000200] MIN TIN OVER COPPER FLASH.
- △ CONTACTS AND BOARDLOCKS: SEE TABLE.
- △ GOLD FLASH ON THE MATING SURFACES, 2.54µm[.000100] MIN TIN OR TIN-LEAD PLATE ON THE SOLDER END, 1.27µm[.000050] MIN NICKEL UNDERPLATE ON THE ENTIRE CONTACT.
- △ 0.76µm[.000030] MIN GOLD PLATE ON THE MATING SURFACES, 2.54µm[.000100] MIN TIN OR TIN-LEAD PLATE ON THE SOLDER END, 1.27µm[.000050] MIN NICKEL UNDERPLATE ON THE ENTIRE CONTACT
- △ OR -
- △ GOLD FLASH OVER PALLADIUM-NICKEL PLATE, 0.76µm[.000030] MIN TOTAL ON THE MATING SURFACES, 2.54µm[.000100] MIN TIN OR TIN-LEAD PLATE ON THE SOLDER END, 1.27µm[.000050] MIN NICKEL UNDERPLATE ON THE ENTIRE CONTACT.
- △ 5.08µm[.000200] MIN TIN-LEAD OVER 1.27µm[.000050] MIN NICKEL.
- △ 5.08µm[.000200] MIN TIN OVER 1.27µm[.000050] MIN NICKEL.
- △ DIMENSION APPLIES FROM CENTER OF CONTACTS.
- △ CLEAR CHROMATE.
- △ OBSOLETE PARTS: OBSOLETE CIS STREAMLINING PER D.RENAUD/D.SINISI.



TRAY	SEE DETAIL E	△	△	△	7-747840-1
-	SEE DETAIL E	△	△	△	7-747840-0
TRAY	SEE DETAIL D	△	△	△	6-747840-9
TRAY	SEE DETAIL D	△	△	△	6-747840-8
△ OBSOLETE	-	△	△	△	6-747840-7
△ OBSOLETE	TRAY SPECIAL	SEE DETAIL D	△	△	1-747840-2
SUPSD BY 747840-6	TUBE	SEE DETAIL E	△	△	1-747840-0
SUPSD BY 747840-3	TUBE	SEE DETAIL D	△	△	747840-9
SUPSD BY 747840-4	TUBE	SEE DETAIL D	△	△	747840-8
△ OBSOLETE	-	SEE DETAIL C	△	△	747840-7
-	TRAY	SEE DETAIL E	△	△	747840-6
-	-	SEE DETAIL E	△	△	747840-5
-	TRAY	SEE DETAIL D	△	△	747840-4
-	TRAY	SEE DETAIL D	△	△	747840-3
SUPSD BY 5747840-2	-	-	△	△	747840-2
SUPSD BY 5747840-2	-	-	△	△	747840-1

PACKAGING	MOUNTING HARDWARE	BOARDLOCK FINISH	CONTACT FINISH	PART NUMBER

THIS DRAWING IS A CONTROLLED DOCUMENT. SEE EDD-11-008374 FOR THE LATEST REVISIONS.

TE Connectivity

PLUG ASSEMBLY, SIZE 1, 9 POSITION, RIGHT ANGLE, FRONT METAL SHELL.

318 SERIES, BOARDLOCKS, AMP/LITE® HD-20

108-40025

114-40010

00779

747840