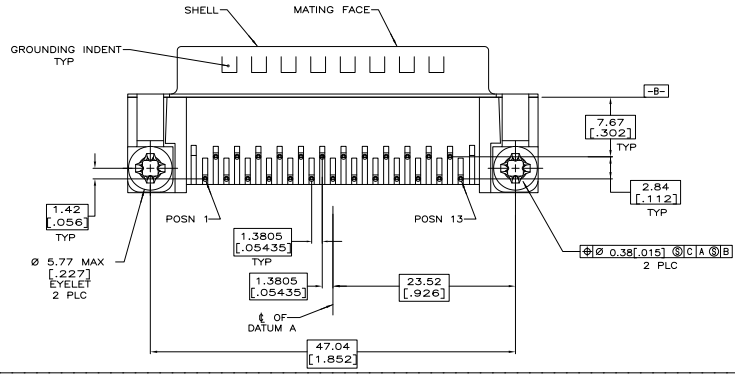
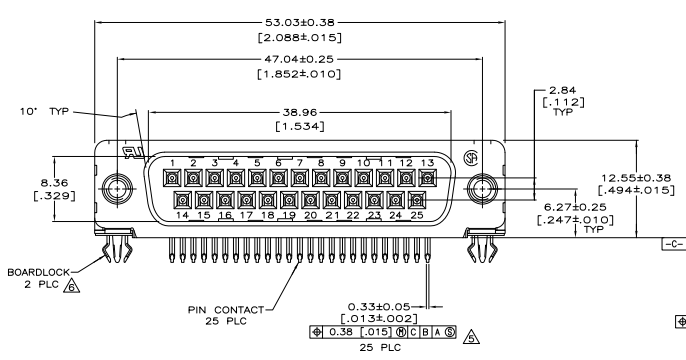
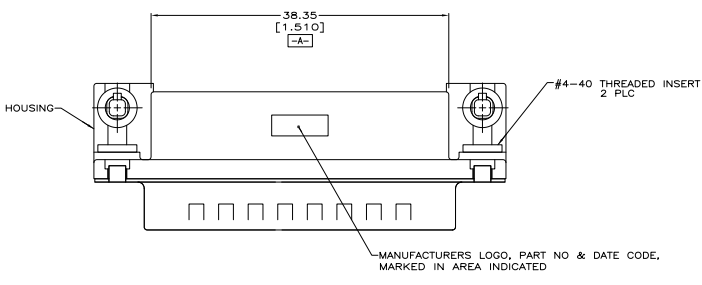
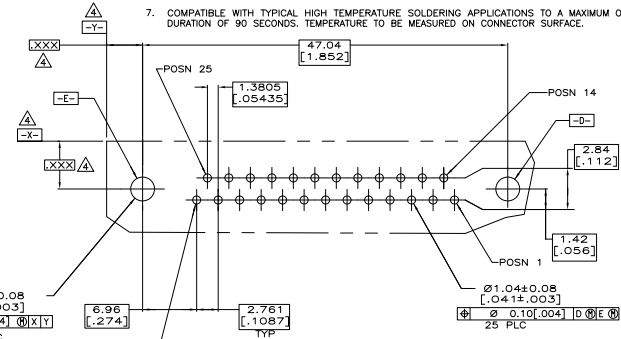


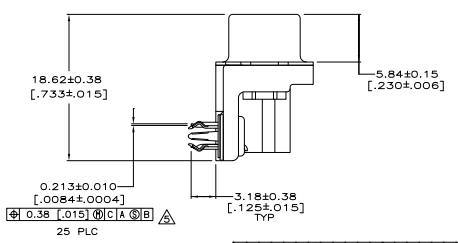
REV	DATE	DESCRIPTION	BY	CHK	APP
00					
01		REVISED PER EDD-11-00874			



- △ HOUSING: NYLON, THERMOPLASTIC, UL 94V0 RATED, BLACK.
- △ SHELL: CARBON STEEL.
- △ PIN CONTACTS: BRASS.
- △ EYELETS: BRASS.
- △ THREADED INSERTS: ZINC.
- △ BOARDLOCKS: COPPER ALLOY.
- △ PIN CONTACTS: 0.76µm[.00030] MIN GOLD PLATE ON THE MATING SURFACES, 2.54µm[.000100] MIN TIN PLATE ON THE SOLDER END, 1.27µm[.000050] MIN NICKEL UNDERPLATE ON THE ENTIRE CONTACT -OR- GOLD FLASH OVER PALLADIUM-NICKEL PLATE, 0.76µm[.000030] MIN TOTAL ON THE MATING SURFACES, 2.54µm[.000100] MIN TIN PLATE ON THE SOLDER END, 1.27µm[.000050] MIN NICKEL UNDERPLATE ON THE ENTIRE CONTACT.
- △ EYELETS: 2.54µm[.000100] MIN TIN OVER COPPER FLASH.
- △ SHELL: 2.54µm[.000100] MIN TIN OVER 1.27µm[.000050] MIN COPPER.
- △ THREADED INSERTS: CLEAR CHROMATE.
- △ BOARDLOCKS: 3.81µm[.000150] MIN TIN OVER 1.27µm[.000050] MIN NICKEL.
- △ PIN CONTACTS: GOLD FLASH ON THE MATING SURFACES, 2.54µm[.000100] MIN TIN PLATE ON THE SOLDER END, 1.27µm[.000050] MIN NICKEL UNDERPLATE ON THE ENTIRE CONTACT.
- △ EYELETS: 2.54µm[.000100] MIN TIN OVER COPPER FLASH.
- △ SHELL: 2.54µm[.000100] MIN TIN OVER 1.27µm[.000050] MIN COPPER.
- △ THREADED INSERTS: CLEAR CHROMATE.
- △ BOARDLOCKS: 3.81µm[.000150] MIN TIN OVER 1.27µm[.000050] MIN NICKEL.
- △ DATUMS AND BASIC DIMENSIONS ESTABLISHED BY CUSTOMER.
- △ POSITION TOLERANCE APPLIES AT CONTACT TIP.
- △ BOARDLOCKS WILL ACCEPT .062 MAX PRINTED CIRCUIT BOARD THICKNESS.
- 7. COMPATIBLE WITH TYPICAL HIGH TEMPERATURE SOLDERING APPLICATIONS TO A MAXIMUM OF 225°C FOR A MAXIMUM DURATION OF 90 SECONDS. TEMPERATURE TO BE MEASURED ON CONNECTOR SURFACE.



RECOMMENDED PC BOARD LAYOUT
 1.57 [.062] PC BOARD THICKNESS



△	5788794-2
△	5788794-1
FINISH	PART NO

COPYRIGHT 2005 TYCO ELECTRONICS CORP ALL RIGHTS RESERVED

THIS DRAWING IS A CONTROLLED DOCUMENT.		MFG ALCOBATA 02-01-03 MFG SEABOARD 02-01-03 MFG WILMINGSLEY 02-01-03	DATE 02-01-03 DRAWN BY 108-40025 REVISED BY 114-40010 SEE TABLE	MFG ALCOBATA 02-01-03 MFG SEABOARD 02-01-03 MFG WILMINGSLEY 02-01-03	DATE 02-01-03 DRAWN BY 108-40025 REVISED BY 114-40010 SEE TABLE
CUSTOMER DRAWING		SIZE A1 SHEET 4.1 OF 1	PLUG ASSEMBLY, SIZE 3, 318 SERIES, WITH FRONT METAL SHELL, HIGH TEMPERATURE, AMPULITE HD-20	PART NO 5788794-2 PART NO 5788794-1	DRAWING NO 108-40025 REVISED BY 114-40010 SEE TABLE