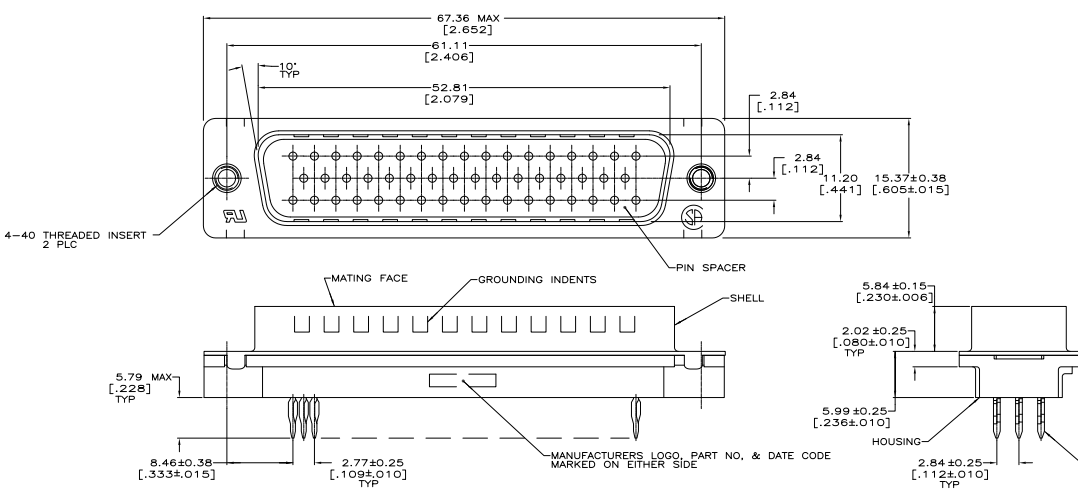


THIS DRAWING IS UNPUBLISHED
 ALL RIGHTS RESERVED

REV	DATE	DESCRIPTION	BY	APP
00				
01		REVISED PER EDD-12-00090		



- △ SHELL: 5.08µm[.000200] MIN TIN OVER 2.54µm[.00100] MIN COPPER.
- △ MOLDED PARTS: UL 94V-0 RATED, POLYESTER, BLACK.
- △ FOR USE WITH 2.36 [093] MINIMUM THICK PRINTED CIRCUIT BOARD, REFER TO APPLICATION SPECIFICATION FOR PRINTED CIRCUIT BOARD LAYOUT DIMENSIONS AND FINISH RECOMMENDATIONS.
- △ CONTACTS:
 - 0.76 MICRO METERS [.000030] MINIMUM GOLD IN MATING AREA.
 - 2.54 MICRO METERS [.000100] MINIMUM TIN ON COMPLIANT PIN.
 - ALL OVER 1.27 MICRO METERS [.000050] MINIMUM NICKEL.
 - OR
 - GOLD FLASH OVER PALLADIUM NICKEL.
 - 0.76 MICRO METERS [.000030] MINIMUM TOTAL IN MATING AREA.
 - 2.54 MICRO METERS [.000100] MINIMUM TIN ON COMPLIANT PIN.
 - ALL OVER 1.27 MICRO METERS [.000050] MINIMUM NICKEL.
- △ CONTACTS: BRASS
- △ SHELL: CARBON STEEL
- △ INSERTS: BRASS

**COPYRIGHT 2005
 TYCO ELECTRONICS CORP
 ALL RIGHTS RESERVED**

THIS DRAWING IS A CONTROLLED DOCUMENT. IMPROVEMENTS AND TOLERANCES PER ASME Y14.5M-2009		REV ALCOSETA 02-28-03 02-28-03	REV BOLASH 04-28-03	REV WILKINSLEY 04-28-03	REV 108-40014	REV 114-40026/3	REV 100779	REV 5749892	REV 4.1	REV 1	REV 1	REV C
DESIGNER	ENGINEER	DATE	DATE	DATE	DATE	DATE	DATE	DATE	DATE	DATE	DATE	DATE
108-40014	114-40026/3	100779	5749892	4.1	1	1	C					
CUSTOMER DRAWING												

5749892-1
 PART NO

TE Connectivity

CONNECTOR ASSEMBLY, PLUG, SIZE 5,
 50 POSN, ACTION PIN, FRONT METAL
 SHELL, W/ PIN SPACER, AMPHANTE