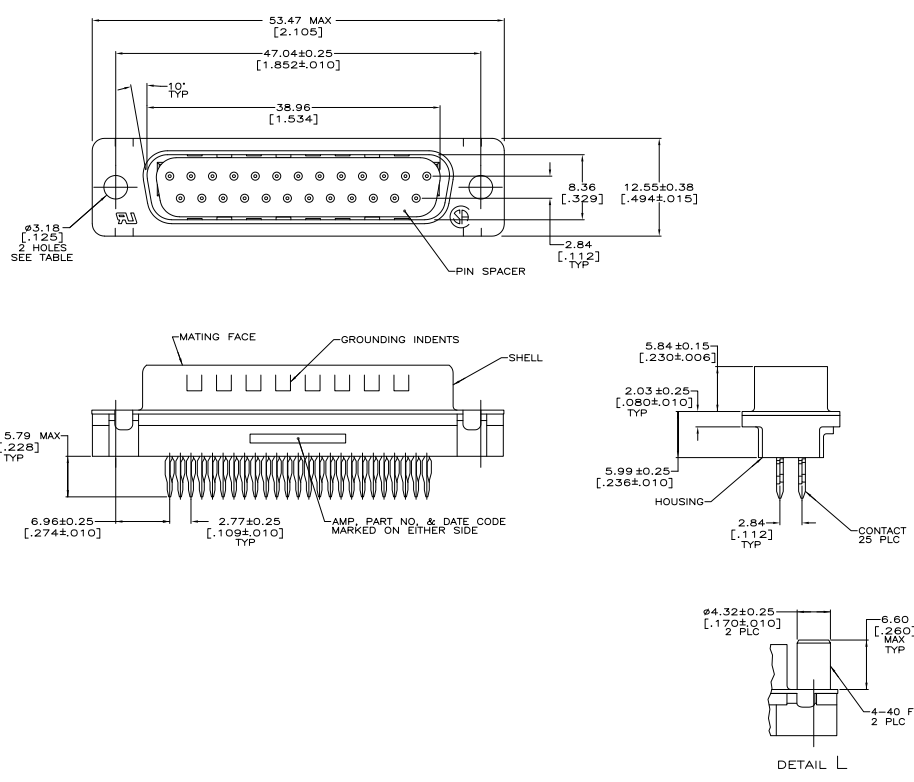


THIS DRAWING IS UNPUBLISHED
 ALL RIGHTS RESERVED

REV	DATE	DESCRIPTION	BY	CHK	APP
00					
C		REVISED PER EDD-12-00090			DLAWND12 CJV SLB



- △ FOR USE WITH 2.36 [.093] MINIMUM THICK PRINTED CIRCUIT BOARD. REFER TO APPLICATION SPECIFICATION FOR PRINTED CIRCUIT BOARD LAYOUT DIMENSIONS AND FINISH RECOMMENDATIONS.
- △ MOLDED PARTS: NYLON OR POLYESTER, UL 94V-0 RATED, BLACK.
- △ CONTACTS: COPPER ALLOY.
- △ SHELL: CARBON STEEL.
- △ INSERTS: BRASS.
- △ SCREWLOCKS: ZINC.
- △ CONTACTS:
 0.76 MICRO METERS [.00030] MINIMUM GOLD IN MATING AREA.
 2.54 MICRO METERS [.00100] MINIMUM TIN ON COMPLIANT PIN.
 ALL OVER 1.27 MICRO METERS [.00050] MINIMUM NICKEL.
 OR
 GOLD FLASH OVER PALLADIUM NICKEL.
 0.76 MICRO METERS [.00030] MINIMUM TOTAL IN MATING AREA.
 2.54 MICRO METERS [.00100] MINIMUM TIN ON COMPLIANT PIN.
 ALL OVER 1.27 MICRO METERS [.00050] MINIMUM NICKEL.
- △ SHELL: 5.08µm [.000200] MIN TIN OVER 2.54µm [.000100] MIN COPPER
- △ INSERTS: UNPLATED.
- △ SCREWLOCKS: CLEAR CHROMATE
- △ DATUMS AND BASIC DIMENSIONS ESTABLISHED BY CUSTOMER.
- △ OBSOLETE PARTS: OBSOLETE CIS STREAMLINING PER D.RENAUD/D.SINISI

SEE DETAIL L	5748146-6
SEE DETAIL K	5748146-4
AS SHOWN	5748146-2
MOUNTING TYPE	PART NUMBER

THIS DRAWING IS A CONTROLLED DOCUMENT. ENGINEERING AND TELEMARKETING FOR AML TALK-STEP

REVISIONS:
 01-31-03
 03-31-03
 03-31-03

DESIGNED BY: M. WILMSLEY
 DRAWN BY: M. WILMSLEY
 CHECKED BY: M. WILMSLEY
 APPROVED BY: M. WILMSLEY

108-40014
 114-40026

PLUG ASSEMBLY, SIZE 3, 25 POSITION, ACTION PIN, W/FRONT METAL SHELL, AMPLIMITE

100779
 5748146

CUSTOMER DRAWING