

4

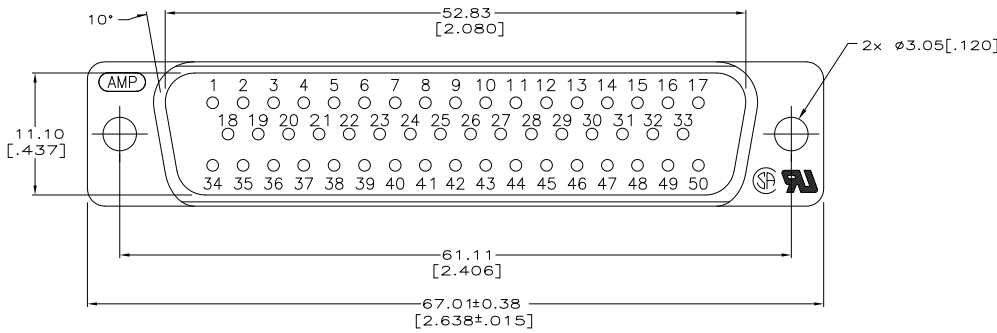
3

2

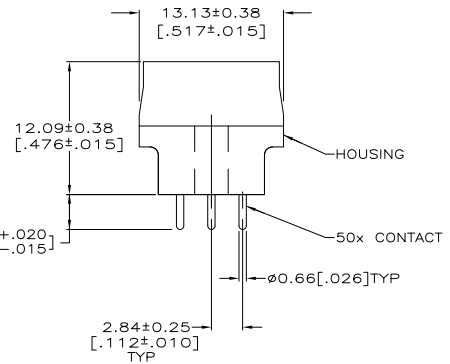
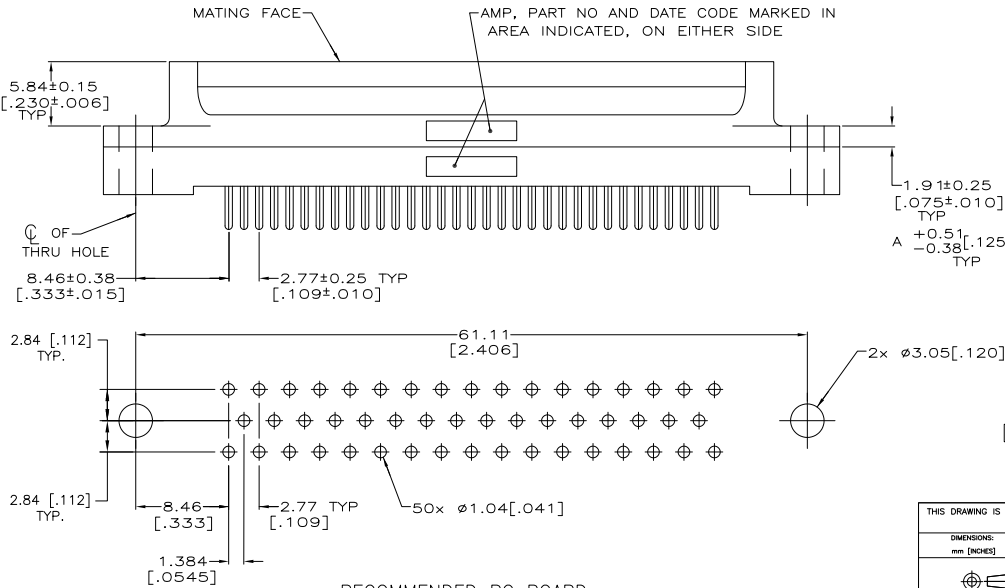
1

THIS DRAWING IS UNPUBLISHED. RELEASED FOR PUBLICATION  
 BY TYCO ELECTRONICS CORPORATION. ALL RIGHTS RESERVED.

LOC	DIST	REVISIONS		DATE	BY	APP'D
GP	00	F	LR			
		M		REVISED PER ECO-09-028093	29JAN2010	CR SB



- 1 HOUSING: BLACK POLYESTER, UL 94V-0 RATED. CONTACTS: BRASS PER MIL-C-50.
- 2 GOLD PLATED FOR LENGTH OF 3.81[.150] MIN FROM MATING END, GOLD FLASH IN MATED AREA, 2.54µm [.000100] MIN TIN OR TIN-LEAD FOR A LENGTH OF DIMENSION A FROM OPPOSITE END, ALL OVER 1.27µm [.000050] MIN NICKEL.
- 3 GOLD PLATED FOR LENGTH OF 3.81[.150] MIN FROM MATING END, 0.76µm [.000030] MIN GOLD IN MATED AREA, 2.54µm [.000100] MIN TIN OR TIN-LEAD FOR A LENGTH OF DIMENSION A FROM OPPOSITE END, ALL OVER 1.27µm [.000050] MIN NICKEL. OR GOLD FLASH OVER PALLADIUM NICKEL PLATED FOR LENGTH OF 3.81 [.150] MIN FROM MATING END, 0.76µm [.000030] MIN PALLADIUM NICKEL IN MATED AREA, 2.54µm [.000100] MIN TIN OR TIN-LEAD FOR A LENGTH OF DIMENSION A FROM OPPOSITE END, BOTH OVER 1.27µm [.000050] MIN NICKEL.



	OBSOLETE	6.35	[.250]	△	208010-6
	OBSOLETE	6.35	[.250]	△	208010-5
	OBSOLETE	4.32	[.170]	△	208010-4
	SUPSD BY 208010-4	4.32	[.170]	△	208010-3
	OBSOLETE	3.18	[.125]	△	208010-2
	OBSOLETE	3.18	[.125]	△	208010-1

RECOMMENDED PC BOARD MOUNTING DIMENSIONS

DIMENSIONS		TOLERANCES UNLESS OTHERWISE SPECIFIED		MATERIAL		FINISH		OTHER		OTHER		OTHER	
mm	[INCHES]	0 PL	1 PL	2 PL	3 PL	4 PL	ANGLES	1	2	3	4	5	6
		±	±	±	±	±	±	±	±	±	±	±	±
		±	±	±	±	±	±	±	±	±	±	±	±
		±	±	±	±	±	±	±	±	±	±	±	±
		±	±	±	±	±	±	±	±	±	±	±	±