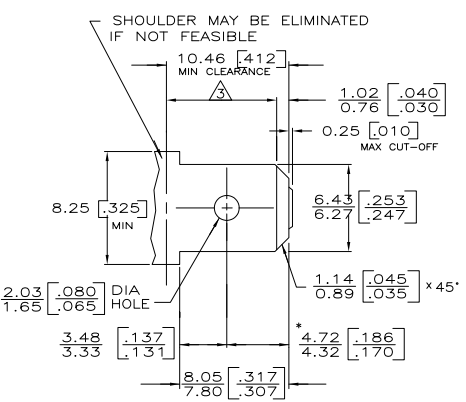
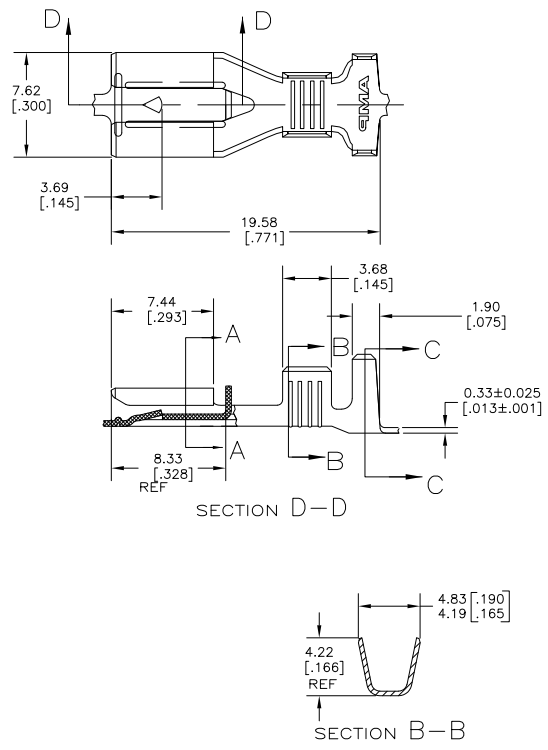


THIS DRAWING IS UNPUBLISHED. RELEASED FOR PUBLICATION. ALL RIGHTS RESERVED.

SUGGESTED MATING TAB



- 1 - MATL: 1/2H BRASS OR NICKEL PL STEEL.
 - 2 - NO BURRS PERMISSIBLE AT HOLE.
 - △ - MUST BE FLAT WITHIN 0.076 [0.003] OVER THIS LENGTH.
 - 4 - TIN PLATING IS REQUIRED ON BRASS WHEN TERMINAL TEMP. IS OVER 225° F.
 - 5 - HOLE MUST BE SYMMETRICAL ABOUT TAB C WITHIN 0.076 [0.003]
- * TO BE USED ONLY WHEN SHOULDER IS ELIMINATED.



LOC	DIST	REVISIONS			
P	LTR	DESCRIPTION	DATE	BY	APPD
AF	50	B2	REL PER EDR 11-022490	04NOV11	JR JH

- 1 CONTINUOUS STRIP ON REELS.
 - 2 ACCEPTS [#16-#12] SINGLE WIRE SIZES AND COMBINATIONS OF TWO[#16'S] OR TWO[#18'S] OR ONE[#16 WITH ONE#18]. WIRE CRIMP WIDTH IS .140, F TYPE
 - 3 FITS INSULATION RANGE 3.05-4.32 [.120-.170] DIA OR TWO AT 3.05 [.120] MAX. INSULATION CRIMP WIDTH .240 F TYPE
- △ PRELIMINARY - NOT FOR PRODUCTION

△ 4	SILVER 0.00381 [0.00150] MIN	1217095-3
	TIN 0.002032 [0.00080] MIN	1217095-2
	-	1217095-1
	FINISH	PART NO

THIS DRAWING IS A CONTROLLED DOCUMENT.

DESIGNED BY: JR. RUTH	DATE: 6/19/98
CHECKED BY: MS. FEHR	DATE: 6/19/98
APPROVED BY: J. GILLESPIE	DATE: 6/19/98
PRODUCT SPEC: 114-2074	APPLICATION SPEC: 114-2074
SIZE: A2	CAGE CODE: 00779
DRAWING NO: C=1217095	RESTRICTED TO: -
MATERIAL: H06 BRASS	FINISH: SEE TABLE
CUSTOMER DRAWING	SCALE: 5:1
	SHEET: 1 of 1
	REV: B2

TE Connectivity
RECEPTACLE, POSITIVE LOCK, 6.35 [250] SERIES