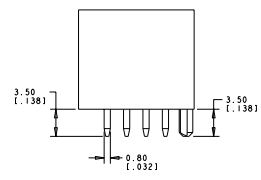
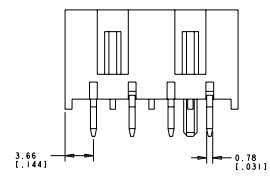
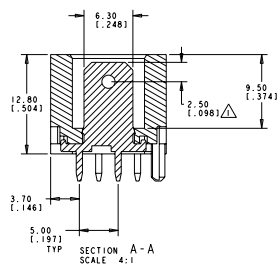
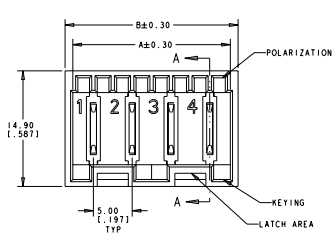
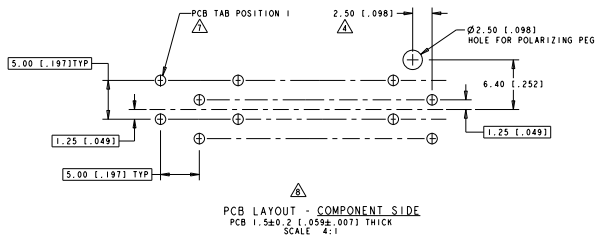


REV	DATE	DESCRIPTION	BY	CHK	APP
1	14-May-2011	Customer Drawing	C. J.	PK.	S



- △ HOUSING HAS RAST 5 COMPLIANT KEYING, LATCHING, AND POLARIZATION. TAB IS $6.3 \times 0.8 \times 0.22$; HOWEVER, THE LOCATION OF THE TAB HOLE DOES NOT MEET DIN 46244.
- 2 RECOMMENDED MATING CONNECTOR FAMILIES INCLUDE POSITIVE-LOCK RAST 5, STANDARD TIMER RAST 5, MULTIFITTING, MULTIFITTING MK11, AND MONO-SHAPE TAB CONNECTORS.
- 3. SEE SHEET 2 FOR AVAILABLE CONFIGURATIONS.
- △ DIMENSION OFF OF LAST POSITION REGARDLESS OF EVEN OR ODD POSITION CONNECTOR.
- △ MATERIAL: HOUSING, NYLON 66, UL 94V-0 CONTACT, BRASS, 0.8 mm THICK.
- △ FINISH: CONTACTS, 3.8 μ m MIN TIN OVER 1.3 μ m MIN NICKEL.
- △ PCB TABS INSERTED IN A STAGGERED PATTERN BEGINNING WITH POSITION 1.
- △ SELECTED HOLES MAY BE $1.05 \pm 0.05 / -0.00$ DIA $(1.041 \pm .002 / -.001$ DIA) FOR IMPROVED (PRESS-FIT) RETENTION TO P.C.B. PRIOR TO SOLDERING.
- 9. PRODUCT QUALIFICATION PER 108-2183
- △ PRELIMINARY - NOT FOR PRODUCTION
- △ PREPRODUCTION - FASR REQUIRED



47.3	45.3	9
42.3	40.3	8
37.3	35.3	7
32.3	30.3	6
27.3	25.3	5
22.3	20.3	4
17.3	15.3	3
12.3	10.3	2
B	A	NO. OF POS.

THIS DRAWING IS A CONTROLLED DOCUMENT. **STE** TE Connectivity

ASSEMBLY, POSITIVE-LOCK, RAST 5, HEADER, VERTICAL

00779 ©=521382

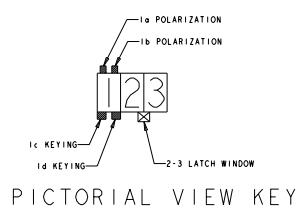
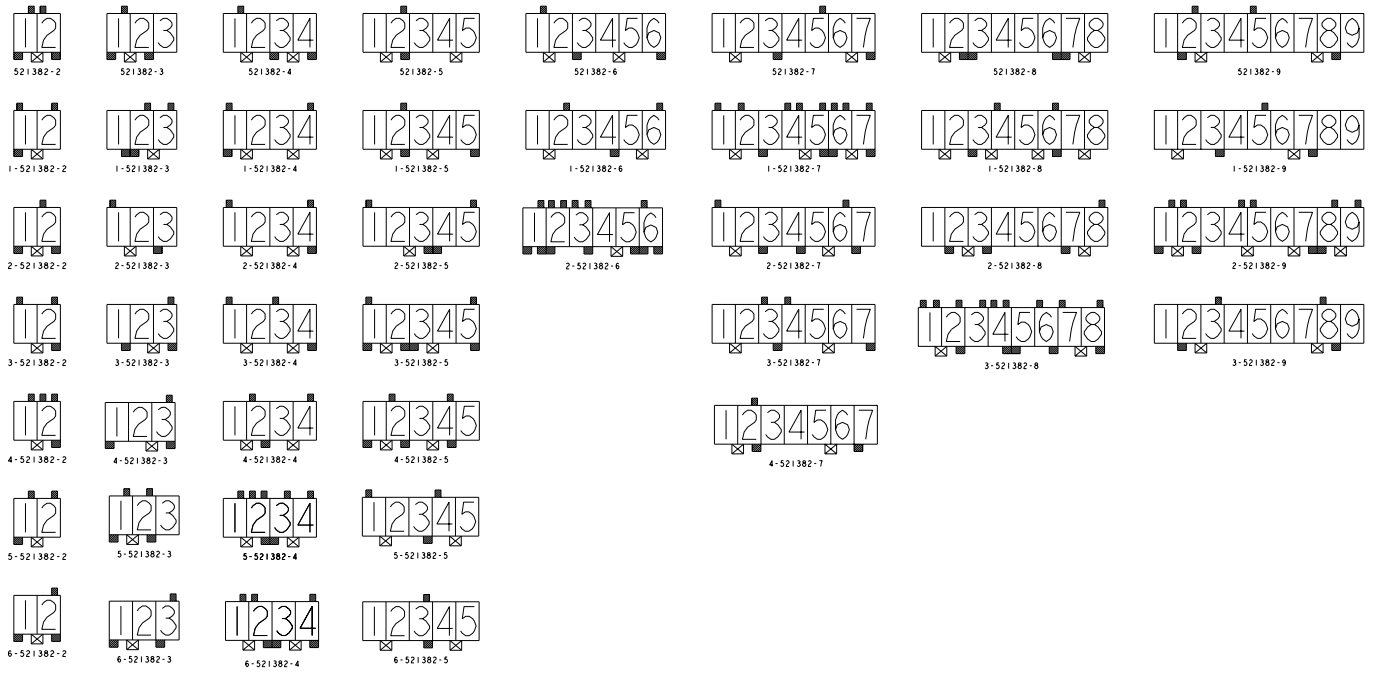
8	7	6	5	4	3	2	1
FILE NUMBER TO IMPROVE	REVISION FOR PUBLICITY						
0000000000	00						

REVISED		REVISED		REVISED		REVISED		REVISED	
NO.	DATE	BY	DESCRIPTION	NO.	DATE	BY	DESCRIPTION	NO.	DATE
AF	50								

REV.	NO.	DATE	BY	DESCRIPTION	NO.	DATE	BY	DESCRIPTION	NO.	DATE	BY	DESCRIPTION
2-3, 7-8	2c, 8d			3b, 8a	9	-		3-521382-9				
1-2, 4-5, 6-7, 8-9	1c, 2d, 7d, 8c			1b, 2a, 4b, 5a, 6a, 7b	9	-		△ 2-521382-9				
1-2, 6-7	3d, 7d			5b	9	09-D		1-521382-9				
2-3, 7-8	2c, 8d			2b, 5a	9	09-C		△ 521382-9				
1-2, 7-8	2d, 4d, 5c, 6d, 8d			1a, 1b, 2b, 3b, 4a, 4b, 6a, 7a, 8b	8	-		△ 521382-8				
2-3, 7-8	2c, 3d, 7c			8b	8	08-C		2-521382-8				
1-2, 3-4, 5-6, 7-8	3c, 6d			4a, 6b	8	-		1-521382-8				
1-2, 7-8	2d, 3c, 6d, 7c			-	8	08-D		521382-8				
1-2, 5-6	2d, 7c			2b	7	-		4-521382-7				
1-2, 5-6	3d, 7d			3a, 4a	7	-		3-521382-7				
1-2, 5-6	3c, 4d, 7c			1a, 6b	7	-		2-521382-7				
1-2, 4-5, 6-7	3c, 5d, 6c, 7d			1a, 2a, 4a, 4b, 5a, 6a, 7b	7	-		1-521382-7				
1-2, 6-7	3d, 7d			5b	7	07-C		521382-7				
4-5	1c, 1d, 2c, 3d, 5d, 6c, 6d			1b, 2a, 2b, 3a, 3b, 6a	6	-		2-521382-6				
1-2, 5-6	4d			2b, 6b	6	06-D		1-521382-6				
1-2, 4-5	3c, 6d			1b	6	06-A		521382-6				
1-2, 4-5	3d			3b	5	-		6-521382-5				
1-2, 4-5	3d			1a, 4a	5	05-D		5-521382-5				
1-2, 3-4	1c, 2d, 4d			2a, 4b	5	-		4-521382-5				
1-2, 3-4	1c, 2d, 3c, 5d			1a, 5b	5	-		3-521382-5				
2-3	3d, 4c			1a, 5b	5	-		2-521382-5				
1-2, 3-4	2d, 5d			2b	5	-		1-521382-5				
1-2, 4-5	2d			2b	5	05-B		521382-5				
1-2, 3-4	2D, 3C, 4D			1B, 2A, 4B	4	-		6-521382-4				
1-2, 3-4	2d, 3c			1b, 2a, 2b, 3b, 4b	4	-		△ 5-521382-4				
1-2, 3-4	2d			2a, 4b	4	04-G		4-521382-4				
1-2, 3-4	4d			1a, 3a	4	04-F		3-521382-4				
1-2, 3-4	4d			1a, 4b	4	04-C		2-521382-4				
1-2, 3-4	1c			1a, 4b	4	04-B		1-521382-4				
1-2, 3-4	3c, 4d			1b	4	04-A		521382-4				
1-2	1c, 3c			3b	3	-		6-521382-3				
1-2	1c, 2d			1b, 2b	3	-		△ 5-521382-3				
2-3	1c, 3d			3b	3	03-H		4-521382-3				
2-3	1d, 3d			3b	3	-		3-521382-3				
1-2	3c			1a	3	03-D		2-521382-3				
2-3	1d, 2c			2b, 3b	3	03-B		1-521382-3				
1-2	1c, 2d			1b	3	03-A		521382-3				
1-2	1c, 2d			2b	2	02-P		6-521382-2				
1-2	1c			1b, 2b	2	02-I		5-521382-2				
1-2	2d			1b, 2a, 2b	2	02-G		4-521382-2				
1-2	2d			1a, 2b	2	02-E		3-521382-2				
1-2	1c, 2d			2a	2	02-C		2-521382-2				
1-2	1c			1a, 2b	2	02-B		1-521382-2				
1-2	1c, 2d			1b, 2a	2	02-A		521382-2				

THIS DRAWING IS A CONTROLLED DOCUMENT.		DRAWING NO. 020022004		REV. 020022004		REV. 020022004	
DRAWING TITLE: ASSEMBLY, POSITIVE-LOCK, RAST 5, HEADER, VERTICAL		DRAWING NO. 020022004		REV. 020022004		REV. 020022004	
DRAWING NO. 020022004		REV. 020022004		REV. 020022004		REV. 020022004	
DRAWING TITLE: ASSEMBLY, POSITIVE-LOCK, RAST 5, HEADER, VERTICAL		DRAWING NO. 020022004		REV. 020022004		REV. 020022004	
DRAWING NO. 020022004		REV. 020022004		REV. 020022004		REV. 020022004	
DRAWING TITLE: ASSEMBLY, POSITIVE-LOCK, RAST 5, HEADER, VERTICAL		DRAWING NO. 020022004		REV. 020022004		REV. 020022004	
DRAWING NO. 020022004		REV. 020022004		REV. 020022004		REV. 020022004	
DRAWING TITLE: ASSEMBLY, POSITIVE-LOCK, RAST 5, HEADER, VERTICAL		DRAWING NO. 020022004		REV. 020022004		REV. 020022004	
DRAWING NO. 020022004		REV. 020022004		REV. 020022004		REV. 020022004	
DRAWING TITLE: ASSEMBLY, POSITIVE-LOCK, RAST 5, HEADER, VERTICAL		DRAWING NO. 020022004		REV. 020022004		REV. 020022004	
DRAWING NO. 020022004		REV. 020022004		REV. 020022004		REV. 020022004	

REV. NO.		DESCRIPTION	DATE	BY
AF	50			



THIS DRAWING IS A CONTROLLED DOCUMENT.		REV. 50	DATE 02/03/2004	
DRAWING NO. 521382-50		REV. 50	DATE 02/03/2004	
DRAWING TITLE		ASSEMBLY, POSITIVE-LOCK, RAST 5, HEADER, VERTICAL		
DRAWING SCALE		1:1		
DRAWING NO.		A 00779-521382		
DRAWING TITLE		CUSTOMER DRAWING		