

4

3

2

1

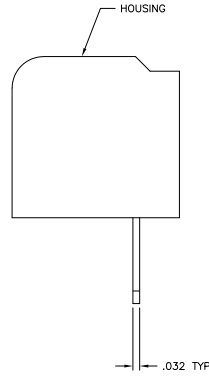
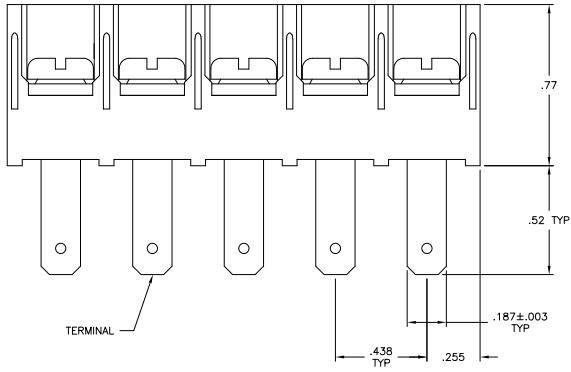
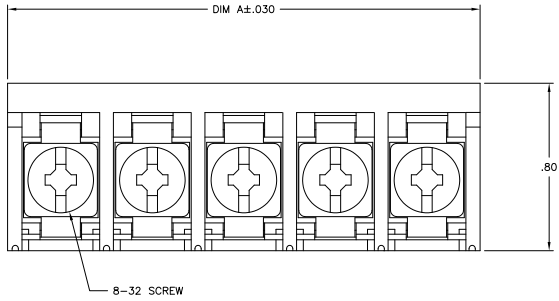
THIS DRAWING IS UNPUBLISHED. RELEASED FOR PUBLICATION
 © COPYRIGHT BY TYCO ELECTRONICS CORPORATION. ALL RIGHTS RESERVED.

LOC	DIST	REVISIONS					
FT	0	P	LTR	DESCRIPTION	DATE	BY	APP
		E		REVISED PER ECO-10-004812	04MAY10	HMR	CR

MATERIALS:
 HOUSING: THERMOPLASTIC, UL94V-0, BLACK.
 TERMINAL: BRIGHT TIN OVER COPPER ALLOY.
 SCREWS: 8-32, ZINC PLATED STEEL.

ELECTRICAL:
 CURRENT RATING: 30A
 VOLTAGE RATING: 600V
 WIRE RANGE: 10-18 AWG (UL)
 10-22 AWG (CSA)

MECHANICAL:
 RECOMMENDED TORQUE: 20 IN.-LB.
 OPERATING TEMP.: -40°C TO +120°C MAX.



OBSOLETE	8QCV-26-008	10.937	26	2-1546296-6
OBSOLETE	8QCV-25-008	10.500	25	2-1546296-5
OBSOLETE	8QCV-24-008	10.062	24	2-1546296-4
OBSOLETE	8QCV-23-008	9.625	23	2-1546296-3
OBSOLETE	8QCV-22-008	9.187	22	2-1546296-2
OBSOLETE	8QCV-21-008	8.750	21	2-1546296-1
	8QCV-20-008	8.823	20	2-1546296-0
	8QCV-19-008	8.385	19	1-1546296-9
	8QCV-18-008	7.948	18	1-1546296-8
	8QCV-17-008	7.510	17	1-1546296-7
	8QCV-16-008	7.073	16	1-1546296-6
	8QCV-15-008	6.635	15	1-1546296-5
	8QCV-14-008	6.198	14	1-1546296-4
	8QCV-13-008	5.760	13	1-1546296-3
	8QCV-12-008	5.323	12	1-1546296-2
	8QCV-11-008	4.885	11	1-1546296-1
	8QCV-10-008	4.448	10	1-1546296-0
	8QCV-09-008	4.010	9	1546296-9
	8QCV-08-008	3.573	8	1546296-8
	8QCV-07-008	3.135	7	1546296-7
	8QCV-06-008	2.698	6	1546296-6
	8QCV-05-008	2.260	5	1546296-5
	8QCV-04-008	1.823	4	1546296-4
	8QCV-03-008	1.385	3	1546296-3
	8QCV-02-008	.948	2	1-1437659-2

CATALOG NUMBER	DIM A	NO OF POSN	PART NUMBER
----------------	-------	------------	-------------

THIS DRAWING IS A CONTROLLED DOCUMENT. DIM: S. SCHLEGEL 19SEP2005
 OK: S. YODER 9/19/05
 S. YODER 9/19/05 NAME: Tyco Electronics Corporation
 Tyco Electronics Harrisburg, PA 17105-3608

DIMENSIONS:	OTHER DIMENSIONS:	APPLICATION SPEC:	SIZE	CAGE CODE	DRAWING NO.	RESTRICTED TO:
INCHES	0 PLC ± .010 1 PLC ± .008 2 PLC ± .007 3 PLC ± .010 4 PLC ± .008 ANGLES ± .5°		A2	00779	1-1437659-2	

MATERIAL: FINISH: CUSTOMER DRAWING SCALE: 1:1 SHEET: 1 of 1 REV: E