

4

3

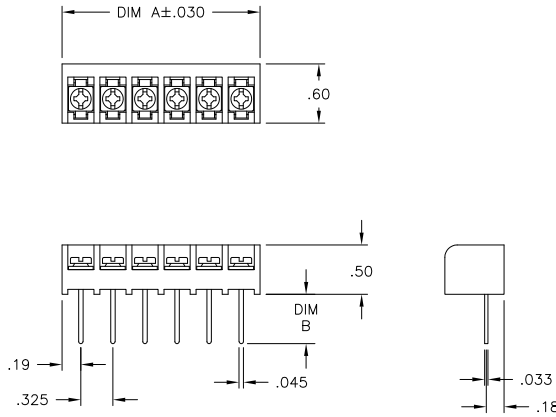
2

1

THIS DRAWING IS UNPUBLISHED. RELEASED FOR PUBLICATION
 © COPYRIGHT - By - ALL RIGHTS RESERVED.

LOC	DIST	REVISIONS			
P	LTR	DESCRIPTION	DATE	DWN	APVD
FT	0	REVISED PER ECO-11-005027	11MAR11	RK	HMR

NOTES:
MATERIALS:
 HOUSING: POLYAMIDE, UL94V-0.
 TERMINALS: COPPER ALLOY, TIN PLATED.
 SCREWS: STEEL, ZINC PLATED.
ELECTRICAL:
 RATING: 20A, 150V(300V LIMITED RATING)
 UL & CSA.
MECHANICAL:
 WIRE RANGE: 14-22 AWG.
 MAXIMUM TIGHTENING TORQUE: 7 IN-LBS.



9.811	30	4WWV-30-008	4-796598-8	
9.486	29	4WWV-29-008	4-796598-7	
9.161	28	4WWV-28-008	4-796598-6	
8.836	27	4WWV-27-008	4-796598-5	
8.511	26	4WWV-26-008	4-796598-4	
8.186	25	4WWV-25-008	4-796598-3	
7.861	24	4WWV-24-008	796598-6	
7.536	23	4WWV-23-008	4-796598-2	
7.211	22	4WWV-22-008	4-796598-1	
6.886	21	4WWV-21-008	4-796598-0	
6.561	20	4WWV-20-008	3-796598-9	
6.236	19	4WWV-19-008	3-796598-8	
5.911	18	4WWV-18-008	3-796598-7	
5.586	17	4WWV-17-008	3-796598-6	
5.261	16	4WWV-16-008	7-1437649-5	
4.936	15	4WWV-15-008	3-796598-5	
4.611	14	4WWV-14-008	1-1546158-9	
4.286	13	4WWV-13-008	3-796598-4	
3.961	12	4WWV-12-008	3-796598-3	
3.636	11	4WWV-11-008	3-796598-2	
3.311	10	4WWV-10-305	6-1437649-9	
3.311	10	4WWV-10-008	1546119-4	
2.986	9	4WWV-09-008	3-796598-1	
2.661	8	4WWV-08-304	6-1437649-6	
2.661	8	4WWV-08-008	1-1546158-8	
2.336	7	4WWV-07-008	3-796598-0	
2.011	6	4WWV-06-008	1-1546158-6	
1.686	5	4WWV-05-008	5-1437649-9	
.394±.010	1.361	4	4WWV-04-008	4-796598-9
.500±.010	1.361	4	4WWV-04-008	5-1437649-5
.500±.010	1.036	3	4WWV-03-008	1-1546158-5
.500±.010	.711	2	4WWV-02-008	2-796598-9

DIM "B"	DIM. "A"	NO. OF POS.	CATALOG NUMBER	PART NO.
---------	----------	-------------	----------------	----------

THIS DRAWING IS A CONTROLLED DOCUMENT.

DWN	S SCHLEGEL	5/19/04
CHK	S YODER	5/19/04
APVD	S YODER	5/19/04

STE TE Connectivity

NAME: 4WWV-XX-008 ASSEMBLY

SIZE	CAGE CODE	DRAWING NO	RESTRICTED TO
A3	00779	C-5-1437649-5	-

CUSTOMER DRAWING SCALE: NTS SHEET 1 OF 1 REV P