

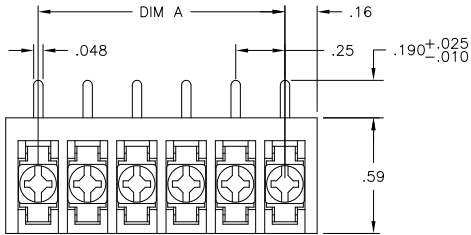
THIS DRAWING IS UNPUBLISHED.
 RELEASED FOR PUBLICATION
 ALL RIGHTS RESERVED.

LOC	DIST	REVISIONS					
FT	0	P	LTR REV	DESCRIPTION	DATE	DWN	APVD
		F		REVISED PER ECO-11-023401	01DEC11	KH	MS

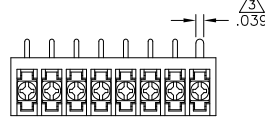
MATERIAL:
 HOUSING: THERMOPLASTIC, UL94V-0, BLACK.
 TERMINAL: BRIGHT TIN PLATED, COPPER ALLOY.
 M3 SCREWS: ZINC PLATED STEEL.
 ELECTRICAL:
 RATED CURRENT: 10A.
 OPERATING VOLTAGE: 300V.
 WIRE RANGE: 16-30 AWG.

MECHANICAL:
 PITCH (TERMINAL SPACING): .250"
 OPERATING TEMP.: 120°C MAX.

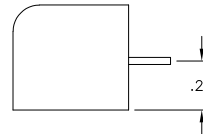
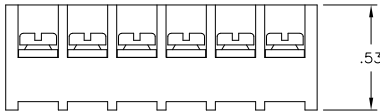
- 1 SEE FIGURE.
- 2 M3 SCREWS BOTTOMED.
- 3 RECOMMENDED PCB HOLE DIAMETER: .090".
- 4 PRELIMINARY PART NUMBER.
- 5 OBSOLETE PARTS: OBSOLETE CIS STREAMLINING PER D.RENAUD/D.SINISI



1-1546119-4



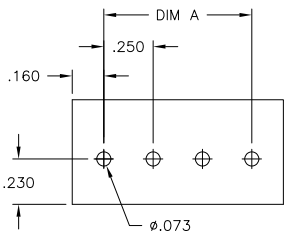
3-1546099-2



3/1 OBSOLETE
 4/1
 5/2 OBSOLETE

7.25	30	3PCR-30-006	3-1546099-0
7.00	29	3PCR-29-006	2-1546099-9
6.75	28	3PCR-28-006	2-1546099-8
6.50	27	3PCR-27-006	2-1546099-7
6.25	26	3PCR-26-006	2-1546099-6
6.00	25	3PCR-25-006	2-1546099-5
5.75	24	3PCR-24-006	2-1546099-4
5.50	23	3PCR-23-006	2-1546099-3
5.25	22	3PCR-22-006	2-1546099-2
5.00	21	3PCR-21-006	2-1546099-1
4.75	20	3PCR-20-006	2-1546119-0
4.50	19	3PCR-19-006	1-1546119-9
4.25	18	3PCR-18-006	1-1546099-8
4.00	17	3PCR-17-006	1-1546099-7
3.75	16	3PCR-16-006	1-1546099-6
3.50	15	3PCR-15-006	1-1546099-5
3.25	14	3PCR-14-006	1-1546099-4
3.00	13	3PCR-13-006	1-1546099-3
2.75	12	3PCR-12-006	1-1546119-7
2.50	11	3PCR-11-006	1-1546119-6
2.25	10	3PCR-10-006	1-1546119-5
2.00	9	3PCR-09-256	1-1546119-4
2.00	9	3PCR-09-006	1-1546119-3
1.75	8	3PCR-08-310	3-1546099-2
1.75	8	3PCR-08-006	1-1546119-2
1.50	7	3PCR-07-006	1-1546119-0
1.25	6	3PCR-06-302	3-1546099-1
1.25	6	3PCR-06-006	1-1437646-2
1.00	5	3PCR-05-006	1437646-9
.75	4	3PCR-04-006	1546119-8
.50	3	3PCR-03-006	1546099-1
.25	2	3PCR-02-006	1546119-5

DIM "A"	NO OF POS	CATALOG NUMBER	TE PART NO.
---------	-----------	----------------	-------------



RECOMMENDED PCB LAYOUT

THIS DRAWING IS A CONTROLLED DOCUMENT.		DWN/ISSUE	4/22/03	TE Connectivity	
S. SCHLEGEL		CHK/CONTROL	6/18/02	NAME	
S. YODER		APVD/APPROVE	6/18/02	3PCR-XX-006 ASSEMBLY	
S. YODER		PRODUCT SPEC		RESTRICTED TO	
APPLICATION SPEC		SIZE	A3	CAGE CODE	00779
MATERIAL		WEIGHT		DRAWING NO.	1437646-9
FINISH		FINISH		SCALE	1:1
CUSTOMER DRAWING		SCALE		SHEET	1
		REV			F