

4

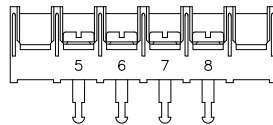
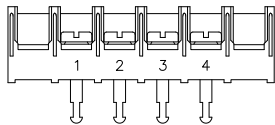
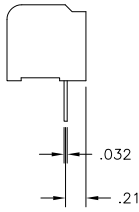
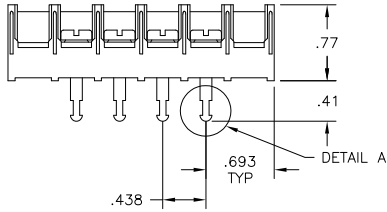
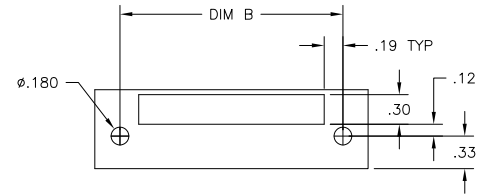
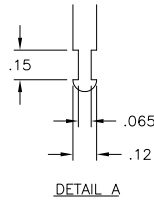
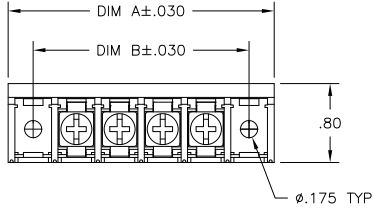
3

2

1

THIS DRAWING IS UNPUBLISHED. RELEASED FOR PUBLICATION  
 © COPYRIGHT - BY TYCO ELECTRONICS CORPORATION. ALL RIGHTS RESERVED.

LOC	DIST	REVISIONS				
P	LTR	DESCRIPTION	DATE	DWN	APVD	
FT	0	REVISED PER ECO-10-004812	06MAY10	HMR	CR	



1-796857-9

2-796857-0

8.312	8.823	18	8STV-18-006	1-796857-8
7.875	8.385	17	8STV-17-006	1-796857-7
7.437	7.948	16	8STV-16-006	1-796857-6
7.000	7.510	15	8STV-15-006	796857-2
6.562	7.073	14	8STV-14-006	1-796857-4
6.125	6.635	13	8STV-13-006	1-796857-3
5.687	6.198	12	8STV-12-006	6-1437659-6
5.250	5.760	11	8STV-11-006	1-796857-1
4.812	5.323	10	8STV-10-006	6-1437659-4
4.375	4.885	9	8STV-09-006	6-1437659-3
3.937	4.448	8	8STV-08-006	796857-8
3.500	4.010	7	8STV-07-006	796857-7
3.062	3.573	6	8STV-06-006	796857-1
2.625	3.135	5	8STV-05-006	796857-6
2.187	2.698	4	8STV-04-660	2-796857-0
2.187	2.698	4	8STV-04-659	1-796857-9
2.187	2.698	4	8STV-04-006	5-1437659-2
1.750	2.260	3	8STV-03-006	4-1437659-8
1.313	1.823	2	8STV-02-006	796857-5

1  
OBSOLETE

MATERIAL:  
 HOUSING: THERMOPLASTIC, UL94V-0, BLACK.  
 TERMINALS: BRIGHT TIN PLATED COPPER ALLOY.  
 SCREWS: 8-32, ZINC PLATED STEEL.

ELECTRICAL:  
 CURRENT RATING: 30A  
 VOLTAGE RATING: 600V  
 WIRE RANGE: 10-18 AWG (UL)  
 10-22 AWG (CSA)

ENVIRONMENTAL:  
 RECOMMENDED TORQUE: 20 IN-LB.  
 OPERATING TEMP.: -40°C TO +120°C

1 OBSOLETE PARTS: OBSOLETE CIS STREAMLINING PER D.RENAUD/D.SINISI

THIS DRAWING IS A CONTROLLED DOCUMENT.		DWN S SCHLEGEL 2/6/04	Tyco Electronics Corporation Harrisburg, PA 17105-3608		
DIMENSIONS: INCHES		CHK H WAKEEM 2/6/04	Tyco Electronics		
TOLERANCES UNLESS OTHERWISE SPECIFIED:		APVD S YODER 2/6/04	NAME		
0 PLC ± -		PRODUCT SPEC			
1 PLC ± -		APPLICATION SPEC			
2 PLC ± .01		WEIGHT			
3 PLC ± .005		SIZE CAGE CODE DRAWING NO			
4 PLC ± -		RESTRICTED TO			
ANGLES ± 2°		A3 00779 C-4-1437659-8			
MATERIAL FINISH		CUSTOMER DRAWING			
		SCALE 1:1		SHEET 1 OF 1 REV D	