

4

3

2

1

THIS DRAWING IS UNPUBLISHED. RELEASED FOR PUBLICATION  
 © COPYRIGHT - BY TYCO ELECTRONICS CORPORATION. ALL INTERNATIONAL RIGHTS RESERVED.

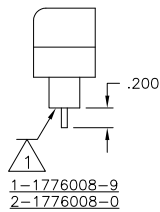
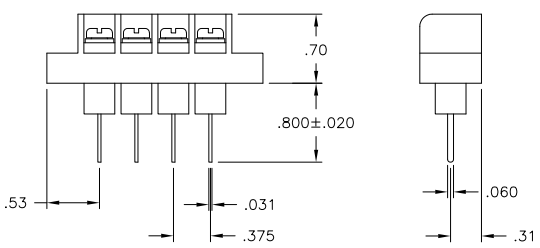
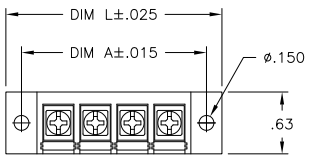
LOC	DIST	REVISIONS				
P	LTR	DESCRIPTION	DATE	DWN	APVD	
FT	0	REVISED PER ECO-10-013203	25JUN10	HMR	CR	

MATERIALS:  
 HOUSING: THERMOPLASTIC, UL94V-0, BLACK.  
 TERMINALS: BRIGHT TIN OVER COPPER ALLOY.  
 SCREWS: #6-32 STEEL, ZINC PLATING W/ CLEAR CHROMATE.

ELECTRICAL:  
 CURRENT RATING: 20A.  
 OPERATING VOLTAGE: 300V.  
 WIRE RANGE: 12-22 AWG.

MECHANICAL:  
 RECOMMENDED TORQUE: 7 IN.-LB.  
 OPERATING TEMP.: 105°C MAX.

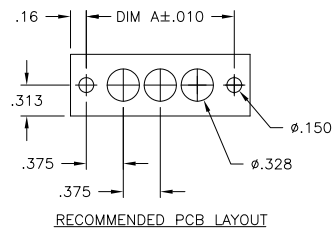
1 TURRET IS FILLED WITH EPOXY.



1-1776008-9  
 2-1776008-0

DIM. L	DIM. A	NO. OF POS.	CATALOG NUMBER	TE PART NO.
7.439	7.125	18	BC6-W308-18	1-1776008-8
7.064	6.750	17	BC6-W308-17	1-1776008-7
6.689	6.375	16	BC6-W308-16	1-1776008-6
6.314	6.000	15	BC6-W308-15	1-1776008-5
5.939	5.625	14	BC6-W308-14	1-1776008-4
5.564	5.250	13	BC6-W308-13	1-1776008-3
5.189	4.875	12	BC6-W308-12	1-1776008-2
4.814	4.500	11	BC6-W308-11	1-1776008-1
4.439	4.125	10	BC6-W308-10	1-1776008-0
4.064	3.750	9	BC6-W308-09	1776008-9
3.689	3.375	8	BC6-W308-08	1776008-8
3.314	3.000	7	BC6-W308-07	1776008-7
2.939	2.625	6	BC6-W308-06	1776008-6
2.564	2.250	5	BC6-W308-05	1776008-5
2.189	1.875	4	BC6-W308-04	1776008-4
1.814	1.500	3	BC6-W308-03-286	2-1776008-0
1.814	1.500	3	BC6-W308-03	1776008-3
1.439	1.125	2	BC6-W308-02-285	1-1776008-9
1.439	1.125	2	BC6-W308-02	1776008-2

SEE FIGURE 1  
 SEE FIGURE 1



THIS DRAWING IS A CONTROLLED DOCUMENT.

DIMENSIONS: INCHES	TOLERANCES UNLESS OTHERWISE SPECIFIED:	DWN S. SCHLEGEL 1/14/05	Tyco Electronics Corporation Harrisburg, PA 17105-3608	
	0 PLC ± -	CHK S. YODER 1/14/05	BC6-W308-XX ASSEMBLY	
	1 PLC ± -	APVD S. YODER 1/14/05	RESTRICTED TO	
	2 PLC ± .01	NAME	SIZE CAGE CODE DRAWING NO	
	3 PLC ± .005	PRODUCT SPEC	A3 00779 C-1776008	
4 PLC ± -	FINISH	WEIGHT	CUSTOMER DRAWING	
ANGLES ± -		SCALE NTS	SHEET 1 of 1	REV A