

4

3

2

1

THIS DRAWING IS UNPUBLISHED.

RELEASED FOR PUBLICATION 20

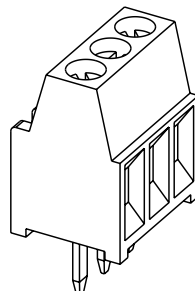
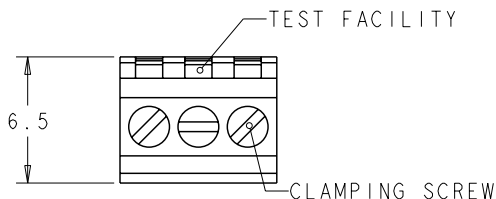
© COPYRIGHT 20

ALL RIGHTS RESERVED.

LOC FT DIST 0

REVISIONS

P	LTR	DESCRIPTION	DATE	DWN	APVD
CI		REVISED PER ECO-11-007905	15APR2011	HMR	CR



282834-3 AS SHOWN

⚠ MATERIALS AND FINISH
 HOUSING: PA 6-6, UL 94-V0, COLOR GREEN.
 CLAMP: BRASS, NICKEL PLATED.
 TERMINAL: BRASS, TIN PLATED.
 CLAMPING SCREW: M1.6, STAINLESS STEEL.

2 SUITABLE FOR 1,6-2,4mm PC BOARD THICKNESS.

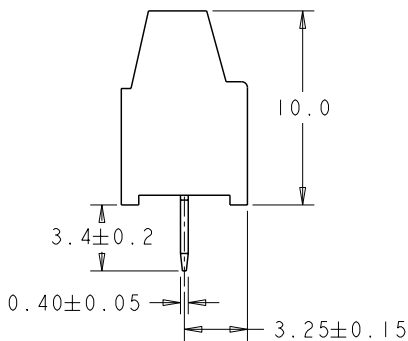
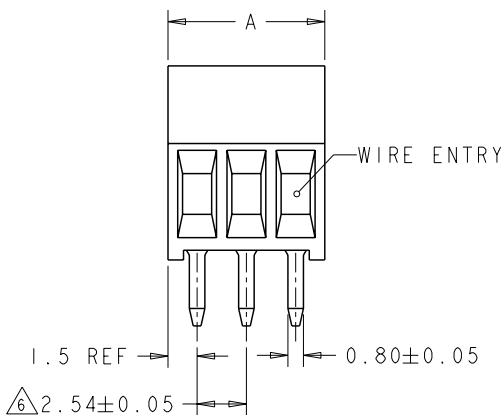
3 CONNECTION POWER
 SOLID WIRE: 0,03-1mm (17AWG)
 STRANDED WIRE: 0,03-0,75mm (18AWG)₂

4 RECOGNIZED UNDER THE COMPONENT PROGRAM OF
 UNDERWRITERS LABORATORIES INC. FILE N° E60677.

5 POSSIBILITY TO PUT TWO OR THREE TERMINAL BLOCKS
 SIDE BY SIDE BY INCREASING THE DIAMETER OF THE
 PCB HOLES TO MINIMUM 1,3mm.

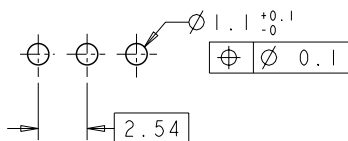
⚠ NOT CUMULATIVE TOLERANCE.

7 TORQUE: 1,73 in-lbs MAX



DIM. A	N° OF POS.	PART NUMBER
30.94	12	1-282834-2
28.40	11	1-282834-1
25.86	10	1-282834-0
23.32	9	282834-9
20.78	8	282834-8
18.24	7	282834-7
15.70	6	282834-6
13.16	5	282834-5
10.62	4	282834-4
8.08	3	282834-3
5.54	2	282834-2

RECOMMENDED PC BOARD LAYOUT



THIS DRAWING IS A CONTROLLED DOCUMENT.

DIMENSIONS:	TOLERANCES UNLESS OTHERWISE SPECIFIED:
mm	
	±
	±.3
	±.25
	±
	±
ANGLES	32

MATERIAL	FINISH

OWN	F. ZANOLINI	15AUG2001
CHK	D. BIEVENOUR	15AUG2001
APVD	D. BIEVENOUR	15AUG2001
PRODUCT SPEC	108-20166	
APPLICATION SPEC	114-20079	
WEIGHT	-	
CUSTOMER DRAWING		

		TE Connectivity	
NAME			
TERMINAL BLOCK PCB MOUNT SIDE WIRE ENTRY STACKING 2.54mm PITCH			
SIZE	CAGE CODE	DRAWING NO	RESTRICTED TO
A3	00779	C-282834	-
SCALE		SHEET	OF
5:1		1	1
		REV	C1

1470-19 (3/11)

Pro/ENGINEER DRAWING