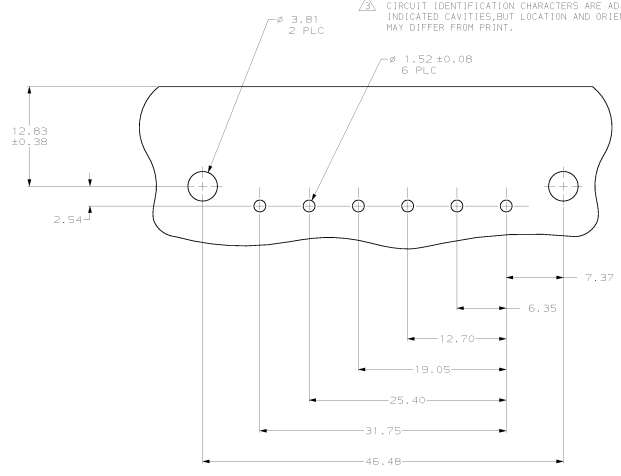
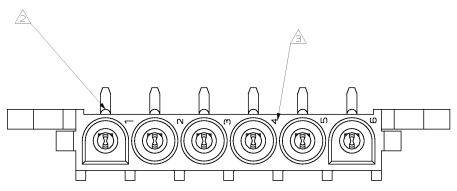
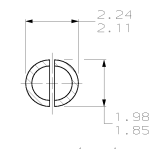
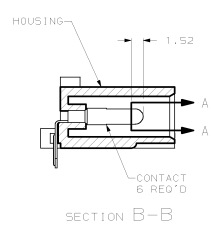
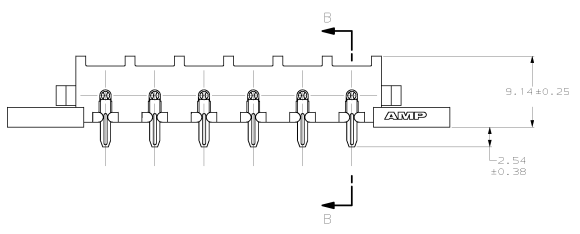
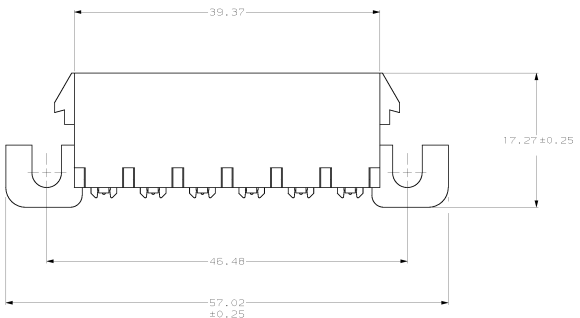


REV. NO.		REVISIONS	
CM	53	REVISED	REVISED
		BLSD-2 PER EC D618-0263-98	PH-14-14 BL 15

- PARTS COMPLY WITH AMP SOLDERABILITY SPEC 109-11-5.
- OPTIONAL CONSTRUCTION MAY DELETE THIS RIB.
- CIRCUIT IDENTIFICATION CHARACTERS ARE ADJACENT TO THE INDICATED CAVITIES, BUT LOCATION AND ORIENTATION MAY DIFFER FROM PRINT.



RECOMMENDED MOUNTING HOLE PATTERN FOR 1.57 THICK P.C. BOARD



SECTION A-A SCALE 10:1

1.98	.076	12.70	.500	57.02	2.245
1.95	.075	9.14	.380	46.48	1.820
1.57	.062	7.37	.290	39.37	1.550
1.52	.060	6.35	.250	31.75	1.250
0.38	.015	3.81	.150	25.40	1.000
0.25	.010	2.54	.100	19.05	.750
0.13	.005	2.24	.088	17.27	.680
0.08	.003	2.11	.083	12.83	.505
PH	IN	MM	IN	MM	IN

CONVERSION TABLE

PH BRZ PRE-TIN	NYLON, UL94V-2, GRAY	794368-2
PH BRZ PRE-TIN	NYLON, UL94V-2, BLUE	794368-1
CONTACT	HOUSING	PART NO

THIS DRAWING IS A CONTROLLED DOCUMENT.

1. CONTROL NO. 4304
 2. DATE 11/84
 3. SHEET 1 OF 1
 4. REV. 000001
 5. PART NO. 794368-1
 6. POSITION UNIVERSAL MATE-N-LOCK™
 7. SEE TABLE FOR DIMENSIONS
 8. SEE TABLE FOR DIMENSIONS
 9. SEE TABLE FOR DIMENSIONS
 10. SEE TABLE FOR DIMENSIONS
 11. SEE TABLE FOR DIMENSIONS
 12. SEE TABLE FOR DIMENSIONS
 13. SEE TABLE FOR DIMENSIONS
 14. SEE TABLE FOR DIMENSIONS
 15. SEE TABLE FOR DIMENSIONS
 16. SEE TABLE FOR DIMENSIONS
 17. SEE TABLE FOR DIMENSIONS
 18. SEE TABLE FOR DIMENSIONS
 19. SEE TABLE FOR DIMENSIONS
 20. SEE TABLE FOR DIMENSIONS
 21. SEE TABLE FOR DIMENSIONS
 22. SEE TABLE FOR DIMENSIONS
 23. SEE TABLE FOR DIMENSIONS
 24. SEE TABLE FOR DIMENSIONS
 25. SEE TABLE FOR DIMENSIONS
 26. SEE TABLE FOR DIMENSIONS
 27. SEE TABLE FOR DIMENSIONS
 28. SEE TABLE FOR DIMENSIONS
 29. SEE TABLE FOR DIMENSIONS
 30. SEE TABLE FOR DIMENSIONS
 31. SEE TABLE FOR DIMENSIONS
 32. SEE TABLE FOR DIMENSIONS
 33. SEE TABLE FOR DIMENSIONS
 34. SEE TABLE FOR DIMENSIONS
 35. SEE TABLE FOR DIMENSIONS
 36. SEE TABLE FOR DIMENSIONS
 37. SEE TABLE FOR DIMENSIONS
 38. SEE TABLE FOR DIMENSIONS
 39. SEE TABLE FOR DIMENSIONS
 40. SEE TABLE FOR DIMENSIONS
 41. SEE TABLE FOR DIMENSIONS
 42. SEE TABLE FOR DIMENSIONS
 43. SEE TABLE FOR DIMENSIONS
 44. SEE TABLE FOR DIMENSIONS
 45. SEE TABLE FOR DIMENSIONS
 46. SEE TABLE FOR DIMENSIONS
 47. SEE TABLE FOR DIMENSIONS
 48. SEE TABLE FOR DIMENSIONS
 49. SEE TABLE FOR DIMENSIONS
 50. SEE TABLE FOR DIMENSIONS
 51. SEE TABLE FOR DIMENSIONS
 52. SEE TABLE FOR DIMENSIONS
 53. SEE TABLE FOR DIMENSIONS
 54. SEE TABLE FOR DIMENSIONS
 55. SEE TABLE FOR DIMENSIONS
 56. SEE TABLE FOR DIMENSIONS
 57. SEE TABLE FOR DIMENSIONS
 58. SEE TABLE FOR DIMENSIONS
 59. SEE TABLE FOR DIMENSIONS
 60. SEE TABLE FOR DIMENSIONS
 61. SEE TABLE FOR DIMENSIONS
 62. SEE TABLE FOR DIMENSIONS
 63. SEE TABLE FOR DIMENSIONS
 64. SEE TABLE FOR DIMENSIONS
 65. SEE TABLE FOR DIMENSIONS
 66. SEE TABLE FOR DIMENSIONS
 67. SEE TABLE FOR DIMENSIONS
 68. SEE TABLE FOR DIMENSIONS
 69. SEE TABLE FOR DIMENSIONS
 70. SEE TABLE FOR DIMENSIONS
 71. SEE TABLE FOR DIMENSIONS
 72. SEE TABLE FOR DIMENSIONS
 73. SEE TABLE FOR DIMENSIONS
 74. SEE TABLE FOR DIMENSIONS
 75. SEE TABLE FOR DIMENSIONS
 76. SEE TABLE FOR DIMENSIONS
 77. SEE TABLE FOR DIMENSIONS
 78. SEE TABLE FOR DIMENSIONS
 79. SEE TABLE FOR DIMENSIONS
 80. SEE TABLE FOR DIMENSIONS
 81. SEE TABLE FOR DIMENSIONS
 82. SEE TABLE FOR DIMENSIONS
 83. SEE TABLE FOR DIMENSIONS
 84. SEE TABLE FOR DIMENSIONS
 85. SEE TABLE FOR DIMENSIONS
 86. SEE TABLE FOR DIMENSIONS
 87. SEE TABLE FOR DIMENSIONS
 88. SEE TABLE FOR DIMENSIONS
 89. SEE TABLE FOR DIMENSIONS
 90. SEE TABLE FOR DIMENSIONS
 91. SEE TABLE FOR DIMENSIONS
 92. SEE TABLE FOR DIMENSIONS
 93. SEE TABLE FOR DIMENSIONS
 94. SEE TABLE FOR DIMENSIONS
 95. SEE TABLE FOR DIMENSIONS
 96. SEE TABLE FOR DIMENSIONS
 97. SEE TABLE FOR DIMENSIONS
 98. SEE TABLE FOR DIMENSIONS
 99. SEE TABLE FOR DIMENSIONS
 100. SEE TABLE FOR DIMENSIONS

