

4

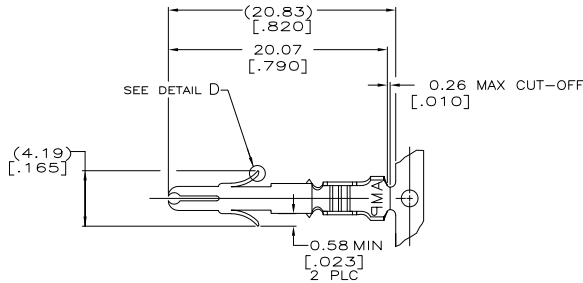
3

2

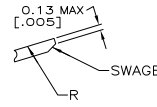
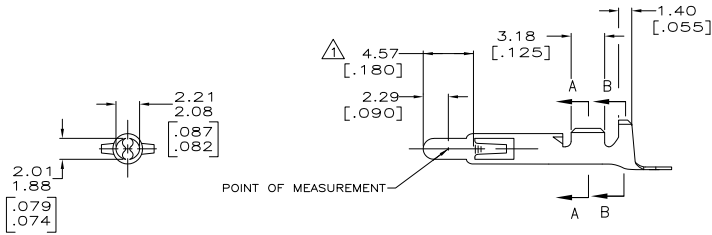
1

THIS DRAWING IS UNPUBLISHED. RELEASED FOR PUBLICATION. ALL RIGHTS RESERVED.

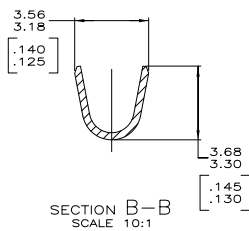
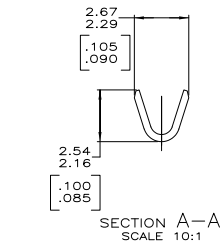
LOC	DIST	REVISIONS		DATE	BY	APP'D
CM	00	F	LR			
		AA1	REVISED PER ECO-11-004917	11MAR11	RK	HMR



- △ PLATED WITH 0.00076 [.000030] GOLD, OVER 0.00127 [.000050] NICKEL UNDERPLATE.
- △ PLATED INTERNALLY WITH 0.00076 [.000030] GOLD.
- 3. WIRE RANGE 0.2-0.75 mm² (24-18 AWG).
- 4. INSULATION RANGE 2.54 [.100] DIA MAX.



DETAIL A SCALE 20:1



350706-7	0.30 [.012] BRASS	GOLD △	350699-7
-	0.30 [.012] PH BRZ	PRE-TIN	350699-3
350706-2	0.30 [.012] BRASS	GOLD △ △	350699-2
350706-1	0.30 [.012] BRASS	PRE-TIN	350699-1
LOOSE PIECE (REF)	MATERIAL	FINISH	PART NUMBER

METRIC

THIS DRAWING IS A CONTROLLED DOCUMENT.		DRM K. WHITAKER 25-FEB-2002	TE Connectivity	
DIMENSIONS: mm [INCHES]		CHK S. RIDGILL 25-FEB-2002	SPLIT PIN, UNIVERSAL MATE-N-LOK™	
TOLERANCES UNLESS OTHERWISE SPECIFIED:		APP'D S. RIDGILL 25-FEB-2002	RESTRICTED TO	
0 PLC	±	PRODUCT SPEC	SIZE	CAGE CODE
1 PLC	±	APPLICATION SPEC	A2	00779
2 PLC	±	WEIGHT	C=	350699
3 PLC	± 0.25(0.010)		SCALE	4:1
4 PLC	±		SHEET	1 of 1
ANGLES	±		REV	AA1
MATERIAL	SEE TABLE	FINISH	CUSTOMER DRAWING	