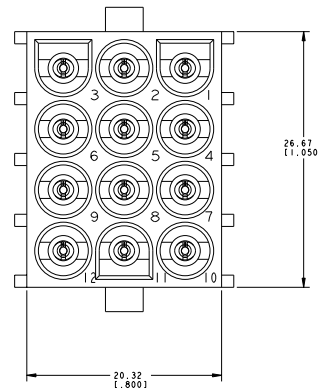
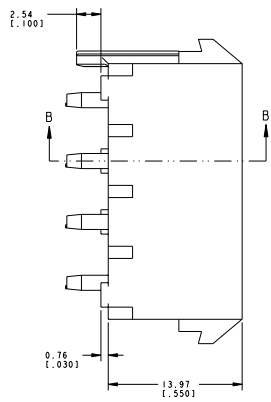
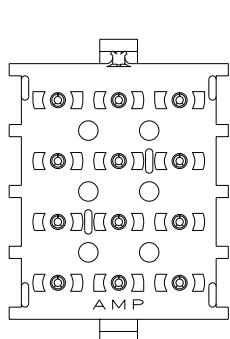
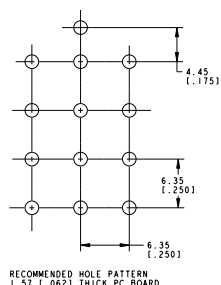
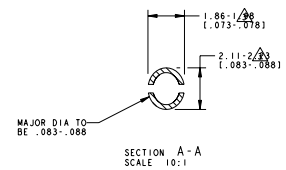
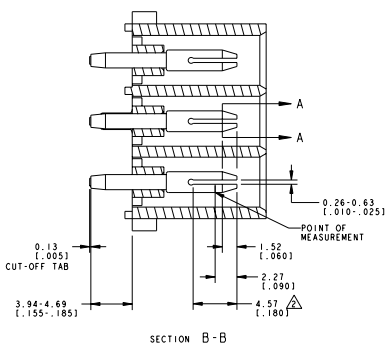


REV	DATE	DESCRIPTION	BY	CHK	APP
00					
P		REVISED PER 0528-1208-04			



- PARTS MUST COMPLY WITH AMP SOLDERABILITY SPEC. 109-11-3.
- CONTACT IS PLATED OVERALL WITH 0.00127 (.000050) NICKEL, THEN 0.00076 (.000030) GOLD OVER CONTACT LENGTH INDICATED AND TIN LEAD ON SOLDER TAIL END.
- CIRCUIT IDENTIFICATION ON CHARACTERS ARE ADJACENT TO THE INDICATED CAVITIES, BUT LOCATION AND ORIENTATION MAY DIFFER FROM PRINT.
- CONTACT IS PLATED OVERALL WITH 0.00127 (.000050) NICKEL, THEN 0.00076 (.000030) GOLD OVER CONTACT LENGTH INDICATED AND MATTE FIN ON SOLDER TAIL END.



MATERIAL	FINISH	MATERIAL	COLOR	PART NO
PH BRZ	PRE-TIN	NYLON, 94V-0	BLACK	1-641974-1
PH BRZ	GOLD	NYLON, 94V-0	WHITE	641974-3
PH BRZ	GOLD	NYLON, 94V-0	WHITE	641974-2
PH BRZ	PRE-TIN	NYLON, 94V-0	WHITE	641974-1

PIN		HOUSING		PART NO	
1	2	3	4	5	6

APPROVAL	DATE	BY	FOR
DESIGNED BY	DATE	BY	FOR
CHECKED BY	DATE	BY	FOR
DATE	BY	FOR	