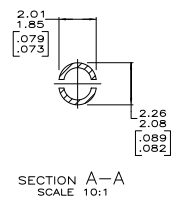
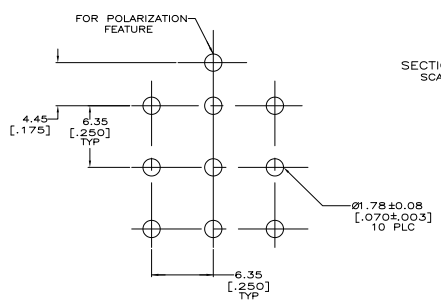
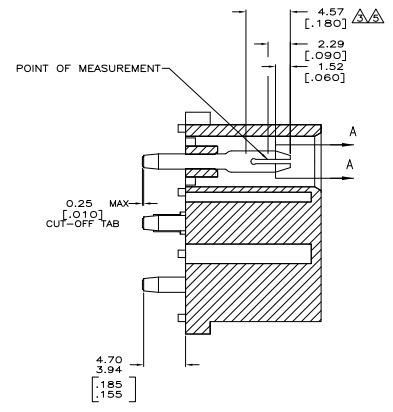
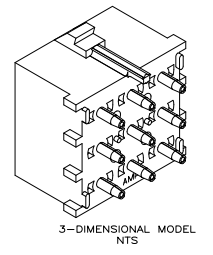
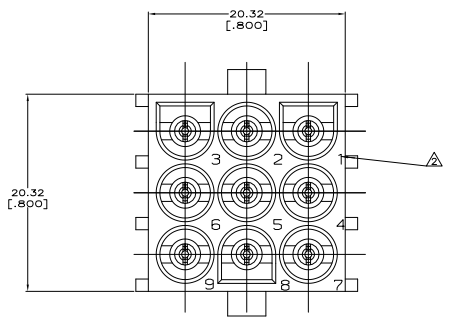
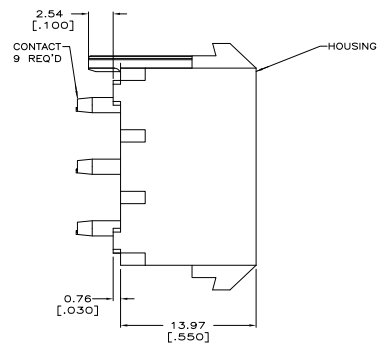
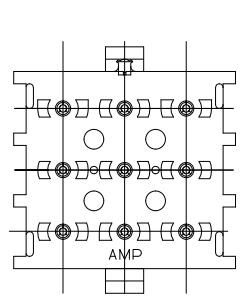


REV	DATE	DESCRIPTION	BY	CHK	APP
CM 00					
R1		REVISED PER EDD-11-004917			

- PARTS COMPLY WITH AMP SOLDERABILITY SPECIFICATION 109-11-3.
- CIRCUIT IDENTIFICATION CHARACTERS ARE ADJACENT TO THE INDICATED CAVITIES, BUT LOCATION AND ORIENTATION MAY DIFFER FROM PRINT.
- CONTACT IS PLATED OVERALL WITH 0.00127 [0.00050] NICKEL, THEN 0.00076 [0.00030] GOLD OVER CONTACT LENGTH INDICATED AND MATTE TIN LEAD ON SOLDERTAIL END.
- DIMENSIONS IN BRACKETS ARE IN INCHES.
- CONTACT IS PLATED OVERALL WITH 0.00127 [0.00050] NICKEL, THEN 0.00076 [0.00030] GOLD OVER CONTACT LENGTH INDICATED AND MATTE TIN ON SOLDERTAIL END.



RECOMMENDED MOUNTING HOLE PATTERN FOR 1.57 [.062] THICK P.C. BOARD



MATERIAL	FINISH	MATERIAL	COLOR	PART NO
PH BRZ	GOLD PLATED	NYLON, UL94V-0	WHITE	641972-3
PH BRZ	TIN PLATED	NYLON, UL94V-0	BLACK	1-641972-1
PH BRZ	GOLD PLATED	NYLON, UL94V-0	WHITE	641972-2
PH BRZ	TIN PLATED	NYLON, UL94V-0	WHITE	641972-1

THIS DRAWING IS A CONTROLLED DOCUMENT.		REV. 1		DATE	
DATE	REV.	DATE	REV.	DATE	REV.

TE Connectivity	TE Connectivity
PIN HEADER ASSEMBLY, POLARIZED, 9 CONTACT, UNIVERSAL, MAKE-TO-ORDER, 1.57 THICK P.C. BOARD	PIN HEADER ASSEMBLY, POLARIZED, 9 CONTACT, UNIVERSAL, MAKE-TO-ORDER, 1.57 THICK P.C. BOARD
SEE TABLE	SEE TABLE
CUSTOMER DRAWING	CUSTOMER DRAWING