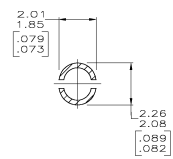
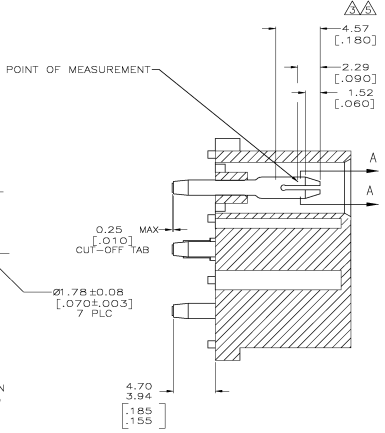
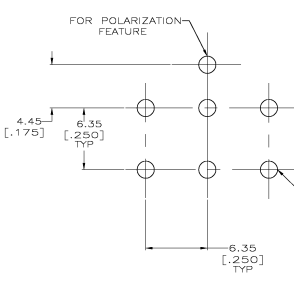
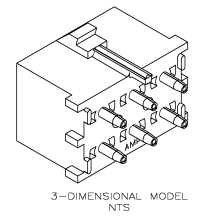
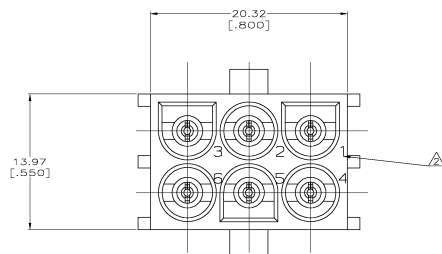
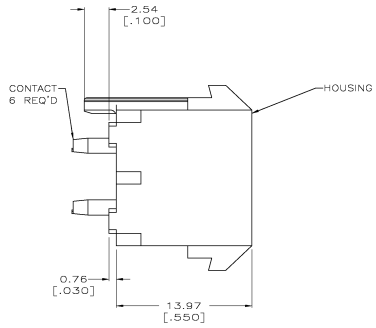
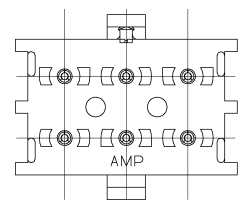


REV	DATE	DESCRIPTION	BY	CHK	APP
CM	00				
R		REVISED PER 6438-1094-04	20/ANOS	KW	SR

- PARTS COMPLY WITH AMP SOLDERABILITY SPECIFICATION 109-11-3.
- CIRCUIT IDENTIFICATION CHARACTERS ARE ADJACENT TO THE INDICATED CAVITIES, BUT LOCATION AND ORIENTATION MAY DIFFER FROM PRINT.
- CONTACT IS PLATED OVERALL WITH 0.00127 [0.00050] NICKEL, THEN 0.00076 [0.00030] GOLD OVER CONTACT LENGTH INDICATED AND MATTE TIN LEAD ON SOLDERTAIL END.
- DIMENSIONS IN BRACKETS ARE IN INCHES.
- CONTACT IS PLATED OVERALL WITH 0.00127 [0.00050] NICKEL, THEN 0.00076 [0.00030] GOLD OVER CONTACT LENGTH INDICATED AND MATTE TIN ON SOLDERTAIL END.



MATERIAL	FINISH	MATERIAL	COLOR	PART NO
PH BRZ	GOLD PLATED	NYLON, UL94V-0	WHITE	641970-3
PH BRZ	TIN PLATED	NYLON, UL94V-0	BLACK	1-641970-1
PH BRZ	GOLD PLATED	NYLON, UL94V-0	WHITE	641970-2
PH BRZ	TIN PLATED	NYLON, UL94V-0	WHITE	641970-1

THIS DRAWING IS A CONTROLLED DOCUMENT.		NYLON	641970-1	Tyco Electronics Corporation Greensboro, NC 27409
DIMENSIONS IN INCHES		NYLON	641970-1	
SYMBOLS		NYLON	641970-1	POLARIZED & CIRCUIT UNIVERSAL MATE-IN-LOCK™
SYMBOLS		NYLON	641970-1	
SYMBOLS		NYLON	641970-1	SEE DATE CODE A1007780-641970
SYMBOLS		NYLON	641970-1	
SYMBOLS		NYLON	641970-1	RESTRICTED TO
SYMBOLS		NYLON	641970-1	SEE TABLE
SYMBOLS		NYLON	641970-1	CUSTOMER DRAWING

