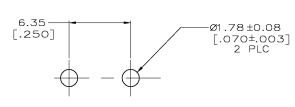
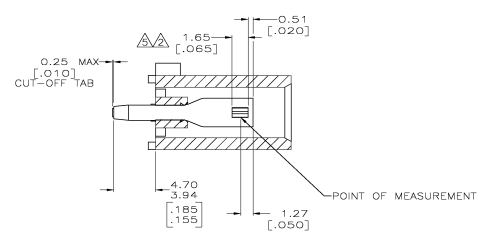
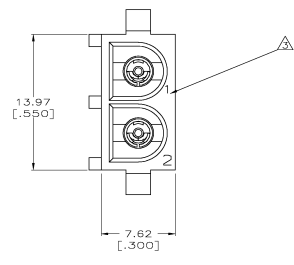
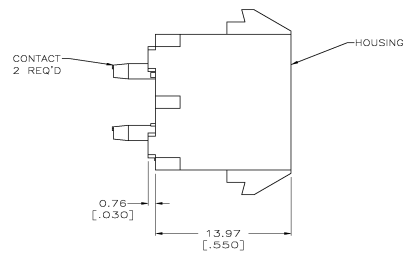
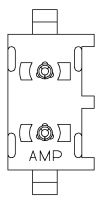
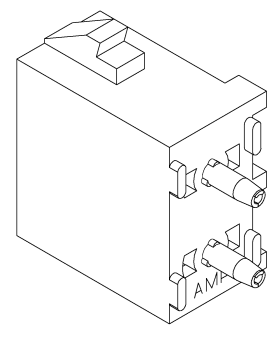


REV	DATE	DESCRIPTION	BY	CHK	APP
00					
01		REVISED PER 0238-1094-04			



RECOMMENDED MOUNTING HOLE PATTERN
 FOR 1.57 [.062] THICK P.C. BOARD

- PARTS COMPLY TO AMP SOLDERABILITY SPECIFICATION 109-11-3.
- CONTACT IS PLATED OVERALL WITH 0.00127 [.000050] NICKEL, THEN 0.00076 [.000030] GOLD OVER CONTACT LENGTH INDICATED AND MATTE TIN LEAD ON SOLDER TAIL END.
- CIRCUIT IDENTIFICATION CHARACTERS ARE ADJACENT TO THE INDICATED CAVITIES, BUT LOCATION AND ORIENTATION MAY DIFFER FROM PRINT.
- DIMENSIONS IN BRACKETS ARE IN INCHES.
- CONTACT IS PLATED OVERALL WITH 0.00127 [.000050] NICKEL, THEN 0.00076 [.000030] GOLD OVER CONTACT LENGTH INDICATED AND MATTE TIN ON SOLDER TAIL END.



3-DIMENSIONAL MODEL
 NTS

PHOSPHOR BRONZE, GOLD	NYLON UL94V-0, WHITE	350824-4
PHOSPHOR BRONZE, GOLD	NYLON UL94V-0, WHITE	350824-2
PHOSPHOR BRONZE, PRE-TIN	NYLON UL94V-0, WHITE	350824-1
CONTACT MATERIAL AND FINISH	HOUSING MATERIAL	PART NUMBER



THIS DRAWING IS A CONTROLLED DOCUMENT:		REV	DATE	BY	CHK	APP
UNAPPROVED	APPROVED					
SIZE	QUANTITY	DATE	BY	CHK	APP	
1/8"	1	01-19-18	60322	UCBAW		
DESCRIPTION	QUANTITY	DATE	BY	CHK	APP	
SOCKET HEADER ASSEMBLY, 2 CIRCUIT UNIVERSAL MATE-N-LOCK™	1	01-19-18	60322	UCBAW		
WEIGHT	SEE TABLE	SEE TABLE	SEE TABLE	SEE TABLE	SEE TABLE	RESTRICTED TO
CUSTOMER DRAWING						