

4

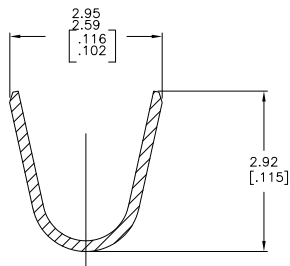
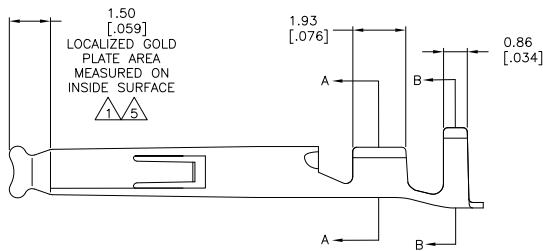
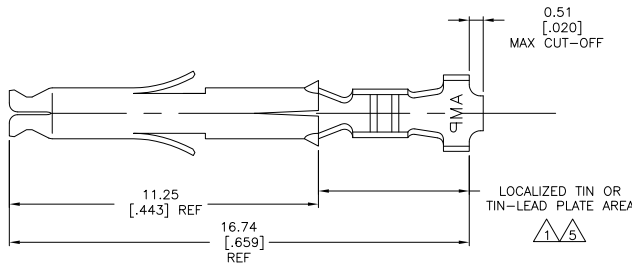
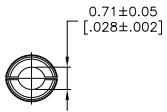
3

2

1

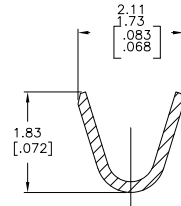
THIS DRAWING IS UNPUBLISHED. RELEASED FOR PUBLICATION. ALL RIGHTS RESERVED.

LOC	DIST	REVISIONS		
F	LNK	DESCRIPTION	DATE	BY
P1		REVISED PER ECO-11-004587	11MAR11	RK HMR



SECTION B-B
SCALE 20:1

- 1 0.00076 [0.00030] MIN GOLD IN LOCALIZED GOLD PLATE AREA AND 0.00254 [0.00100] MIN BRIGHT TIN-LEAD IN LOCALIZED TIN-LEAD PLATE AREA OVER 0.00130 [0.00050] MIN NICKEL.
- 2 WIRE RANGE: 0.12 - 0.4mm² (26-22 AWG).
- 3 INSULATION RANGE: 1.20-1.75 [.047-.069] DIA.
- 4 DIMENSIONS IN BRACKETS ARE IN INCHES.
- 5 0.00076 [0.00030] MIN GOLD IN LOCALIZED GOLD PLATE AREA AND 0.00254 [0.00100] MIN BRIGHT TIN IN LOCALIZED TIN PLATE AREA OVER 0.00130 [0.00050] MIN NICKEL.



SECTION A-A
SCALE 20:1

5	0.20 [.008] PH BRZ	1-770902-1
5	0.20 [.008] BRASS	1-770902-0
1	0.20 [.008] PH BRZ	770902-6
PRE-TIN	0.20 [.008] PH BRZ	770902-4
1	0.20 [.008] BRASS	770902-3
PRE-TIN	0.20 [.008] BRASS	770902-1
FINISH	MATERIAL	PART NUMBER

THIS DRAWING IS A CONTROLLED DOCUMENT.		DRN S. HOOVER 1600702	TE Connectivity
DIMENSIONS: mm [INCHES]		CHK C. JONES 1600702	
TOLERANCES UNLESS OTHERWISE SPECIFIED:		APP'D C. JONES 1600702	SOCKET, MINI UNIVERSAL MATE-N-LOK(TM)
0 PLG ± .01		PRODUCT SPEC	
1 PLG ± .01		APPLICATION SPEC	SIZE CASE CODE DRAWING NO
2 PLG ± .01		WEIGHT	A2 00779 C=770902
3 PLG ± 0.15 [0.006]		FINISH	RESTRICTED TO
4 PLG ± .01			
ANGLES ± .1°			
MATERIAL	FINISH	CUSTOMER DRAWING	SCALE 10:1 SHEET 1 of 1 REV P1