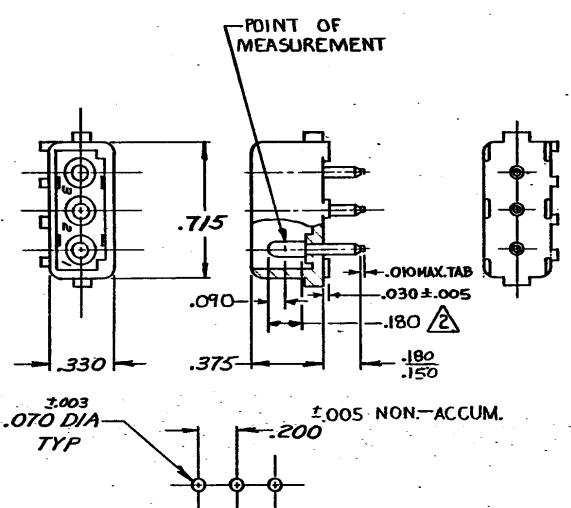


DRAWING MADE IN AMERICAN PROJECTION



RECOMMENDED LAYOUT FOR
.062 THICK P.C. BOARD

1. PARTS COMPLY WITH AMP SOLDERABILITY
SPEC. NO. 109-11-3
△ CONTACT IS PLATED OVERALL WITH .000050 NICKEL, THEN
.000030 GOLD OVER CONTACT LENGTH INDICATED AND MATTE
TIN ON SOLDER TAIL END.

350210-2	NYLON NATURAL	COPPER ALLOY - GOLD △
350210-1	NYLON - NATURAL	Copper Alloy - PRE-TIN

Unpublished copy not to be reproduced nor published without the permission of AMP Incorporated

T1	REVISED PER ECO-11-005294	RK	HMR	07APR 11
LTR	REVISION RECORD	DR	CHK	DATE

350210	REQUIRED PER ASSEMBLY
	DESCRIPTION

DR 9. Edman 4-12-73	MATERIAL AND FINISH SEE TABLE	CUSTOMER COPY REFERENCE ONLY	
CHK Dra/B/lowmpe 4/13/73	WIRE - RANGE - INSULATION -H-	CLASS #084 DIA. PIN	TYPE PIN HEADER
DE Thurle 4-13-73	SCALE -H	LOC CM B	NO 350210
APP Thurle 4-13-73	NAME 3 CIRCUIT MATE-N-LOK P.C. BOARD HEADER	T1	

WAS P-72-6198

DIMENSIONS IN INCHES. DO NOT SCALE PRINT.

