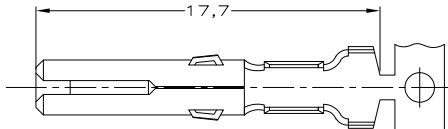


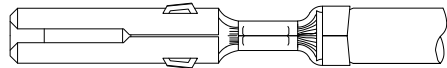
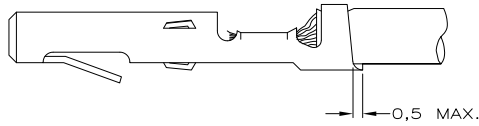
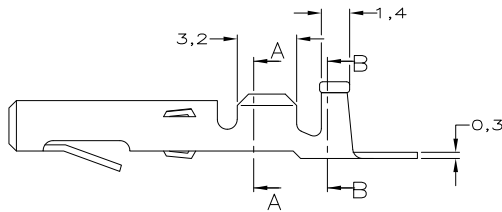
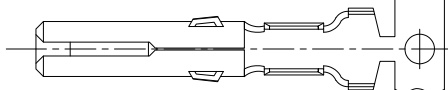
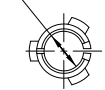
DO NOT SCALE
DIMENSIONS IN mm

METRIC

THIRD ANGLE
PROJECTION

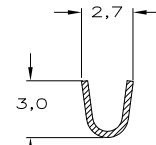
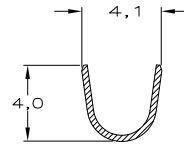


FOR 2,1 DIA. PIN.



NOTES:

- △ FOR USE ON STANDARD APPLICATORS.(RIGHT-LEFT FEED)
- △ FOR USE ON MINIATURE APPLICATORS.(LEFT-RIGHT FEED)
- △ FOR USE ON MINIATURE APPLICATORS, AMP O-MATOR APPLICATION.(LEFT-RIGHT FEED)
- △ OBSOLETE PARTS: OBSOLETE CIS STREAMLINING PER D.RENAUD/D.SINISI



WIRE RANGE :
0,5-1,0mm² AWG
INSULATION RANGE :
1,8-3,3mm DIA.

△ OBSOLETE	△	SEL. GOLD	BRASS	8-163300-1
OBSOLETE	△	PRE-TINPLATED	BRASS	1-163300-5
	△	PRE-TINPLATED	PHOSPHOR BR.	163300-8
	△	UNPLATED	PHOSPHOR BR.	163300-7
	△	PRE-TINPLATED	BRASS	163300-6
	△	UNPLATED	BRASS	163300-5
△ OBSOLETE	△	PRE-TINPLATED	PHOSPHOR BR.	163300-4
	△	UNPLATED	PHOSPHOR BR.	163300-3
	△	PRE-TINPLATED	BRASS	163300-2
	△	UNPLATED	BRASS	163300-1
		PLATING	MATERIAL	PARTNUMBER

				CUSTOMER DRAWING		FOR REFERENCE ONLY	
-	-	-	-	© COPYRIGHT - BY		WILL NOT BE UPDATED	
-	-	-	-	ALL INTERNATIONAL RIGHTS RESERVED.			
-	-	-	-	THIS DRAWING IS UNPUBLISHED			
-	-	-	-	RELEASED FOR PUBLICATION			
				STE		TE Connectivity	
				NAME		SOCKET MATE-N-LOK.	
J2	REVISED PER ECO-11-005294	RK	HMR	13APR11			
LTR.	REVISION RECORD	DR.	CHK.	DATE			
DR.:	J.V.D.HEIJDEN	CHK.:	A.BIJNEN	APP.:	LV.SOEST.	DWG.No.	163300
DATE:	10-04-92	DATE:	-	DATE:	-	REV.LTR.	J2
						SHEET	1 OF 1
							A3