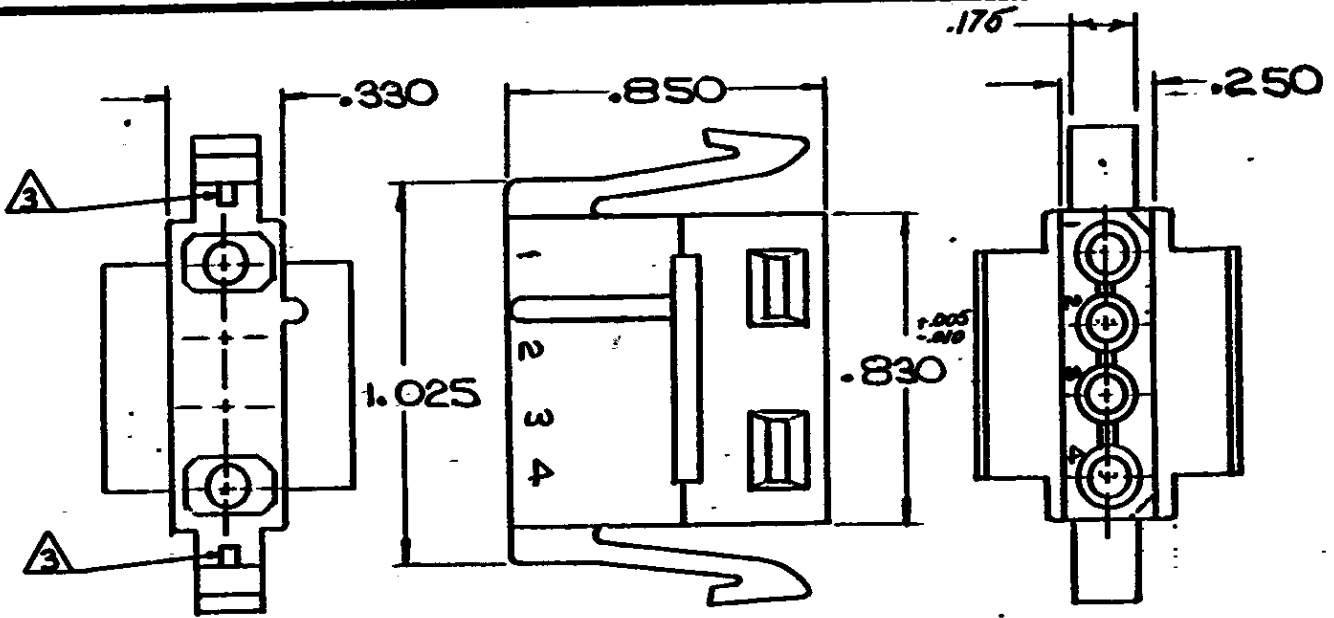


DRAWING MADE IN AMERICAN PROJECTION

SHEET 1 OF 2
NUMBER 480727



1. MATES WITH CAP 480728
2. TO BE USED WITH MATE-N-LOK DUAL LANCE SOCKETS.
3. OPTIONAL CONSTRUCTION

HOUSING	MATERIAL	COLOR
I-480727-0	NYLON	NATURAL

DIMENSIONS IN INCHES. DO NOT SCALE PRINT.

Copyright © 1973 by AMP Incorporated. All rights reserved. AMP products covered by patents and/or patents pending.

©1973 BY AMP INCORPORATED. ALL RIGHTS RESERVED. AMP PRODUCTS COVERED BY PATENTS AND/OR PATENTS PENDING

CUSTOMER COPY REFERENCE ONLY

MATERIAL AND FINISH
SEE TABLE



AMP INCORPORATED
HARRISBURG, PENNA.

CLASS .084 SOCKET HOUSING

WIRE — RANGE — INSULATION
—H— —H—

TYPE
PANEL MOUNT

TOLERANCE EXCEPT AS NOTED
± .010 ± .010

LOC: CM A
REV F

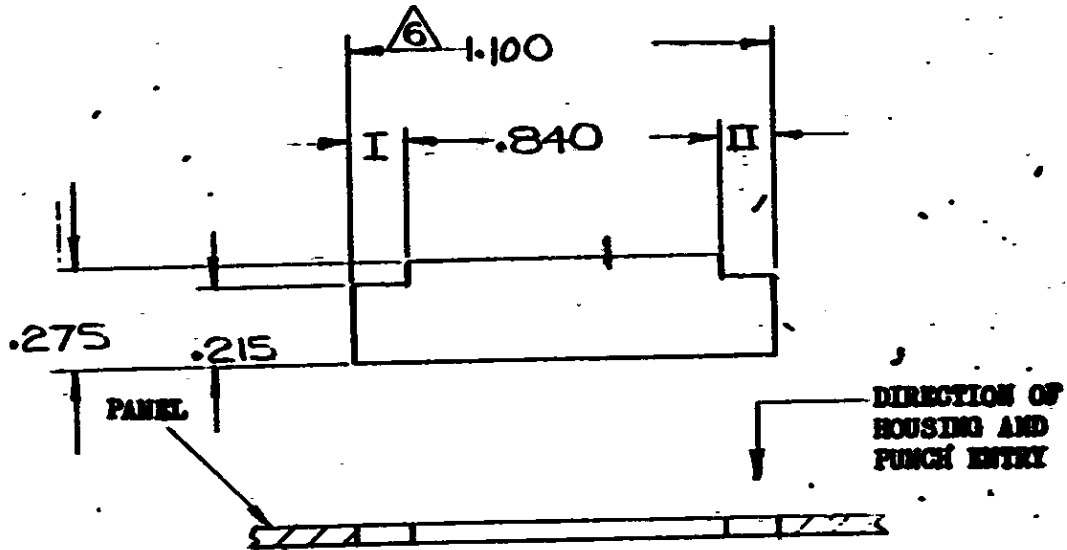
NAME **4 CIRCUIT MATE-N-LOK PLUG DUAL LANCE HOUSING**

F	REV PER CM 2277	TB	RS	426
E	REV PER CM-620			
TR	REVISION RECORD	ECN	DATE	
DR	<i>L. H. ...</i>	CHK	<i>3-21-73</i>	
CHK	<i>3/10/73</i>	APR	<i>3-21-73</i>	

PRINTED BY

NUMBER 480727

.015 R MAX
ALL CORNERS



- NOTE:**
1. Recommended panel thickness .025 - .065.
 2. Both locking legs to be squeezed together and housing to be inserted straight-in, as opposed to a rocking manner of insertion.
 3. The panel must be punched so that the housing enters the panel in the same direction as the punch.
 4. Dimensions I and II to be equal within .005.
 5. Panel must not have any material (paint, porcelain, etc.) applied in the mounting hole area that would decrease retention of the housing in the panel.

⚠ If Notes 3 and/or 5 are not complied with, the .100 dimension should be reduced to .080 to assure proper housing retention in the panel.

PRINT DIST DIMENSIONS IN INCHES. DO NOT SCALE PRINT

				LTR REVISION RECORD etn DATE	
				DR DE APP	

© 1975 BY AMP INCORPORATED. ALL RIGHTS RESERVED. AMP PRODUCTS COVERED BY PATENTS AND/OR PATENTS PENDING.

**CUSTOMER COPY
REFERENCE ONLY**

MATERIAL AND FINISH
11

AMP AMP INCORPORATED
HARRISBURG, PENNSA.
CLASS *11*

WIRE RANGE INSULATION
11

TOLERANCE EXCEPT AS NOTED
± .005

SCALE
NTS

TYPE *11*

LOC **CM A** NO SHEET 2 OF 2
480727

REV **F**

NAME **RECOMMENDED MOUNTING INFORMATION**
4 CIRCUIT MATE-N-LOK PANEL MOUNT FLG