

4

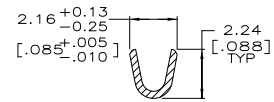
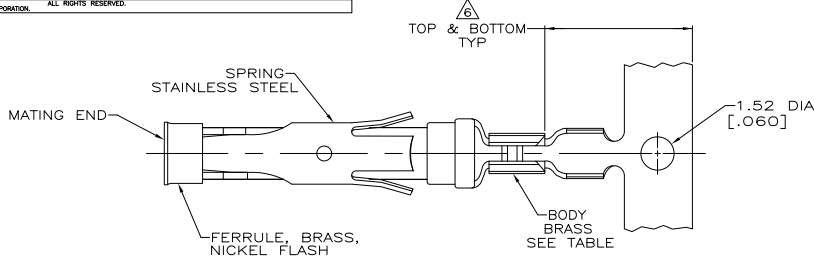
3

2

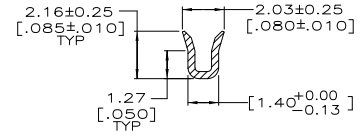
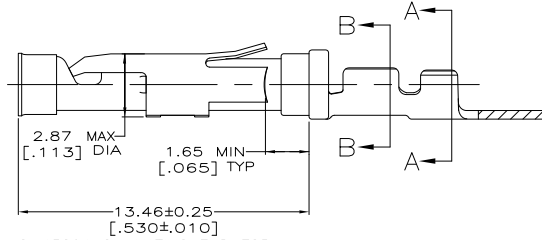
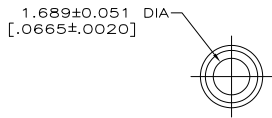
1

THIS DRAWING IS UNPUBLISHED. RELEASED FOR PUBLICATION. BY TYCO ELECTRONICS CORPORATION. ALL RIGHTS RESERVED.

LOC	DIST	REVISIONS					
FT	0	P	LTR	DESCRIPTION	DATE	MIN	APD
		S		REVISED PER DG3B-0956-04	11/19/04	SS	GS
		S1		REVISED PER ECO-09-021826	6JAN10	KK	AEG



SECTION A-A



SECTION B-B

- 1. 0.76µm [.000030] MIN GOLD PER MIL-G-45204 ON MATING END FOR A LENGTH OF 5.08 [.200] MIN WITH GOLD FLASH ON THE REMAINDER OVER 0.76µm [.000030] MIN NICKEL PER QQ-N-290.
- 2. 1.27µm [.000050] MIN TIN-LEAD PER MIL-T-10727 OVER 0.76µm [.000030] MIN NICKEL PER QQ-N-290.
- 3. 0.76µm [.000030] MIN GOLD PER MIL-G-45204 ON MATING END FOR A LENGTH OF 5.08 [.200] MIN WITH A UNIFORM GRADIENT TO 0.25µm [.000010] MIN GOLD PER MIL-G-45204 ON THE REMAINDER OVER 0.76µm [.000030] MIN NICKEL PER QQ-N-290.
- 4. 0.38µm [.000015] MIN GOLD PER MIL-G-45204 ON MATING END FOR A LENGTH OF 5.08 [.200] MIN WITH GOLD FLASH ON THE REMAINDER OVER 0.76µm [.000030] MIN NICKEL PER QQ-N-290.
- 5. 1.27µm [.000050] MIN GOLD PER MIL-G-45204 ON MATING END FOR A LENGTH OF 5.08 [.200] MIN WITH GOLD FLASH ON REMAINDER OVER 1.90µm [.000075] MIN NICKEL PER QQ-N-290.
- 6. GOLD PLATING NEED NOT APPEAR IN THIS AREA EXCEPT 66424-9 HAS GOLD PLATING ON INSULATION BARREL.
- 7. REVERSE REELED FOR MINI-APPLICATOR.
- 8. WIRE RANGE 26-30 AWG. INSULATION RANGE 1.02[.040]-1.52[.060].
- 9. 0.38µm [.000015] MIN GOLD PER MIL-G-45204 ON MATING END FOR A LENGTH OF 5.08 [.200] MIN, 1.27µm [.000050] MIN TIN-LEAD PER MIL-T-10727 FOR A LENGTH OF 5.69 [.224] MIN ON OPPOSITE END, BOTH OVER 1.27µm [.000050] MIN NICKEL PER QQ-N-290 ON ENTIRE CONTACT.
- 10. 1.27µm [.000050] MIN TIN PER MIL-T-10727 OVER 0.76µm [.000030] MIN NICKEL PER QQ-N-290.
- 11. OBSOLETE PARTS: OBSOLETE CIS STREAMLINING PER D.RENAUD/D.SINISI

	△	△	△	-	1-66424-1
OBSOLETE	△	△	△	66428-5	1-66424-0
OBSOLETE	△	△	△	-	66424-9
	△	△	△	66428-4	66424-8
	△	△	△	66428-3	66424-7
	△	△	△	-	66424-6
OBSOLETE	△	△	△	66428-1	66424-5
STANDARD	△	△	△	66428-3	66424-3
OBSOLETE	STANDARD	△	△	66428-1	66424-1
	REELING	BODY FINISH	LOOSE PIECE REF	PART NO.	

THIS DRAWING IS A CONTROLLED DOCUMENT. DATE: 08/06/91

DESIGNED BY: R. SHIBBY
 CHECKED BY: S. STONE
 APPROVED BY: [Signature]

DATE: 9-19-91

TYCO ELECTRONICS Corporation
 Harrisburg, Pa 17105-3608

SOCKET ASSEMBLY, .062, TYPE III+

SIZE: A2
 CASE CODE: 00779
 DRAWING NO: 66424

RESTRICTED TO: []

MATERIAL: []
 FINISH: []
 SEE CALLOUTS

CUSTOMER DRAWING

SCALE: 8:1
 SHEET: 1 of 1
 REV: S1