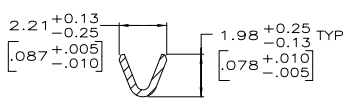
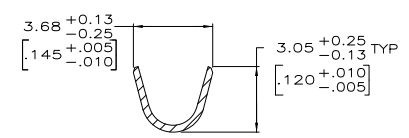
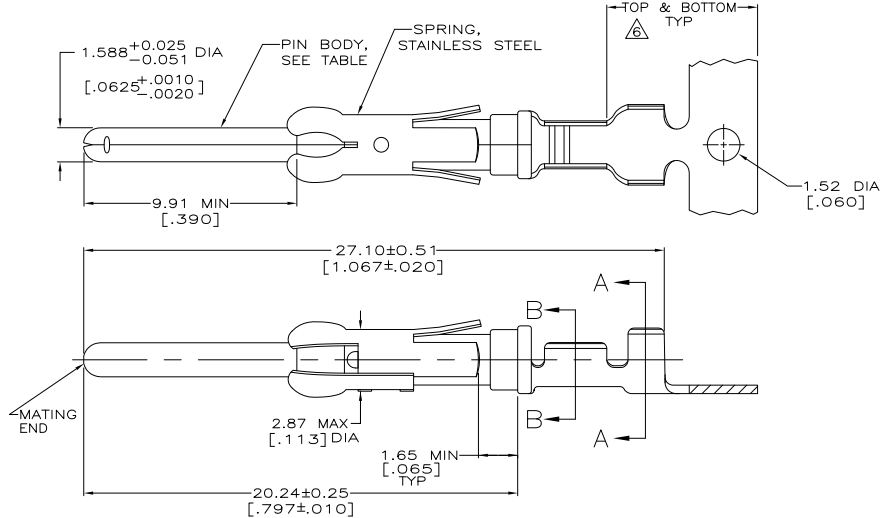


THE DRAWING IS UNPUBLISHED.  
 © COPYRIGHT - BY -  
 RELEASED FOR PUBLICATION  
 ALL RIGHTS RESERVED.

REVOLUTION		REVISIONS			
NO.	DATE	DESCRIPTION	DATE	BY	APPD
0					
1		REVISED PER ECO-11-004820	11MAR11	RK	HMR



- △ REVERSE REELED FOR MINI-APPLICATOR.
- △ 0.76µm [.000030] MIN PRECIOUS METAL PLATE ON MATING END FOR A LENGTH OF 5.08 [.200] MIN OVER 1.27µm [.000050] MIN NICKEL PLATE. GOLD FLASH ALL OVER. CONFORMS TO THE REQUIREMENTS OF TE CONNECTIVITY PRODUCT SPEC 108-10042, BASED ON EIA/ECA-364-1000.01A ( CONTROLLED ENVIRONMENT APPLICATIONS ).
- △ 0.76µm [.000030] MIN PRECIOUS METAL PLATE ON MATING END FOR A LENGTH OF 5.08 [.200] MIN WITH A UNIFORM GRADIENT TO 0.25µm [.000010] ON REMAINDER. OVER 1.27µm [.000050] MIN NICKEL PLATE. GOLD FLASH ALL OVER. CONFORMS TO THE REQUIREMENTS OF TE CONNECTIVITY PRODUCT SPEC 108-10042, BASED ON EIA/ECA-364-1000.01A ( CONTROLLED ENVIRONMENT APPLICATIONS ).
- △ 0.38µm [.000015] MIN GOLD PER MIL-G-45204 ON MATING END FOR A LENGTH OF 5.08 [.200] MIN WITH GOLD FLASH ON THE REMAINDER OVER 1.27µm [.000050] MIN NICKEL PER QQ-N-290.
- △ 1.27µm [.000050] MIN GOLD PER MIL-G-45204 ON MATING END FOR A LENGTH OF 5.08 [.200] MIN WITH GOLD FLASH ON THE REMAINDER OVER 3.81µm [.000150] MIN NICKEL PER QQ-N-290. GOLD PLATING NEED NOT APPEAR IN THIS AREA.
- △ 1.27µm [.000050] MIN TIN-LEAD PER MIL-T-10727 OVER
- △ 1.27µm [.000050] MIN NICKEL PER QQ-N-290.
- 8 WIRE RANGE 24-20 AWG.
- 9 INSULATION RANGE 2.03[.080]-2.54[.100] DIA.
- △ 0.38µm [.000015] MIN GOLD PER MIL-G-45204 ON MATING END FOR A LENGTH OF 5.08 [.200] MIN. 1.27µm [.000050] MIN TIN-LEAD PER MIL-T-10727 FOR A LENGTH OF 5.69 [.224] MIN ON OPPOSITE END, BOTH OVER 1.27µm [.000050] MIN NICKEL PER QQ-N-290 ON ENTIRE CONTACT.
- △ 1.27µm [.000050] MIN TIN PER MIL-T-10727 OVER
- △ 1.27µm [.000050] MIN NICKEL PER QQ-N-290.
- △ OBSOLETE PARTS: OBSOLETE CIS STREAMLINING PER D.RENAUD/D.SINISI

△ OBSOLETE	△ STANDARD	△	△	BRASS	1-66400-0	1-66332-5
				BRASS <td>1-66400-0</td> <td>1-66332-4</td>	1-66400-0	1-66332-4
				PHOSPHOR BRONZE <td>-</td> <td>1-66332-3</td>	-	1-66332-3
				BRASS <td>66400-5</td> <td>1-66332-2</td>	66400-5	1-66332-2
				BRASS <td>-</td> <td>1-66332-1</td>	-	1-66332-1
				BRASS <td>66400-4</td> <td>66332-8</td>	66400-4	66332-8
				BRASS <td>66400-3</td> <td>66332-7</td>	66400-3	66332-7
				BRASS <td>66400-2</td> <td>66332-6</td>	66400-2	66332-6
				BRASS <td>66400-1</td> <td>66332-5</td>	66400-1	66332-5
				BRASS <td>66400-4</td> <td>66332-4</td>	66400-4	66332-4
				BRASS <td>66400-3</td> <td>66332-3</td>	66400-3	66332-3
				BRASS <td>66400-1</td> <td>66332-1</td>	66400-1	66332-1
				REELING	PIN BODY FINISH	PIN BODY
						LOOSE PIECE REF
						PART NO

THIS DRAWING IS A CONTROLLED DOCUMENT.

BY: R. SHIREY	DATE: 7-18-91	<b>TE</b> TE Connectivity
CHK: B. STONE	DATE: 8-13-91	
APP: J. WESTMAN	DATE: 8-19-91	
PRODUCT SPEC: CONTACT, PIN, .062, TYPE II+		
APPLICATION SPEC: -	SIZE: A2	QAGE CODE: 00779
MATERIAL: -	WEIGHT: -	DRAWING NO: C=66332
FINISH: -	CUSTOMER DRAWING	RESTRICTED TO: -
SCALE: 8:1	SHEET: 1 of 1	REV: W1