

4

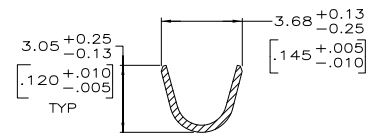
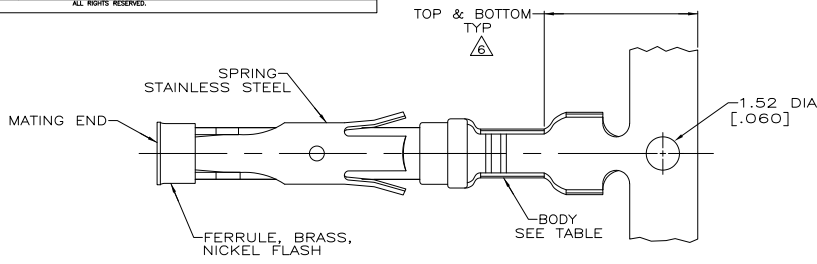
3

2

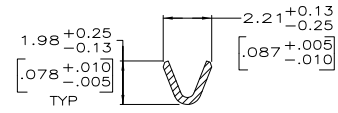
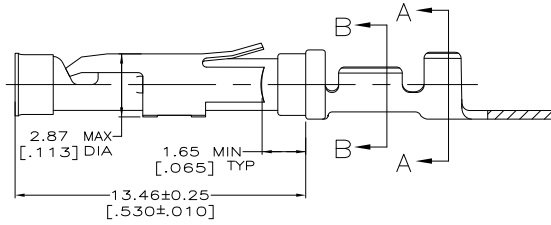
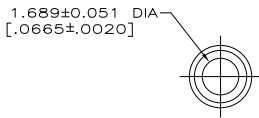
1

THIS DRAWING IS UNPUBLISHED. RELEASED FOR PUBLICATION. ALL RIGHTS RESERVED.

LOC	DIST	REVISIONS		
FT	0	P	LTR	DESCRIPTION
		W2		REVISED PER ECO-11-004587
			DATE	MIN
			11MAR11	RK HMR



SECTION A-A



SECTION B-B

- ▲ 0.76µm [.000030] MIN GOLD PER MIL-G-45204 ON MATING END FOR A LENGTH OF 5.08 [.200] MIN WITH GOLD FLASH ON THE REMAINDER OVER 0.76µm [.000030] MIN NICKEL PER QQ-N-290.
- ▲ 1.27µm [.000050] MIN TIN-LEAD PER MIL-T-10727 OVER 0.76µm [.000030] MIN NICKEL PER QQ-N-290.
- ▲ 0.76µm [.000030] MIN GOLD PER MIL-G-45204 ON MATING END FOR A LENGTH OF 5.08 [.200] MIN WITH A UNIFORM GRADIENT TO 0.25µm [.000010] MIN GOLD PER MIL-G-45204 ON THE REMAINDER OVER 0.76µm [.000030] MIN NICKEL PER QQ-N-290.
- ▲ 0.38µm [.000015] MIN GOLD PER MIL-G-45204 ON MATING END FOR A LENGTH OF 5.08 [.200] MIN WITH GOLD FLASH ON THE REMAINDER OVER 0.76µm [.000030] MIN NICKEL PER QQ-N-290.
- ▲ 1.27µm [.000050] MIN GOLD PER MIL-G-45204 ON MATING END FOR A LENGTH OF 5.08 [.200] MIN WITH GOLD FLASH ON REMAINDER OVER 0.76µm [.000030] MIN NICKEL PER QQ-N-290.
- ▲ GOLD PLATING NEED NOT APPEAR IN THIS AREA.
- ▲ REVERSE REELED FOR MINI-APPLICATOR.
- 8. WIRE RANGE 24-20 AWG.
- INSULATION RANGE 2.03[.080]-2.54[.100]. NOT RELEASED, AMP HOLLAND USE ONLY.
- ▲ 0.38µm [.000015] MIN GOLD PER MIL-G-45204 ON MATING END FOR A LENGTH OF 5.08 [.200] MIN, 1.27µm [.000050] MIN TIN-LEAD PER MIL-T-10727 FOR A LENGTH OF 5.69 [.224] MIN ON OPPOSITE END, BOTH OVER 1.27µm [.000050] MIN NICKEL PER QQ-N-290 ON ENTIRE CONTACT.
- ▲ 1.27µm [.000050] MIN TIN PER MIL-T-10727 OVER 0.76µm [.000030] MIN NICKEL PER QQ-N-290.
- ▲ OBSOLETE PARTS: OBSOLETE CIS STREAMLINING PER D.RENAUD/D.SINISI

STANDARD	▲	▲	BRASS	1-66399-0	1-66331-5
STANDARD	▲	▲	BRASS	1-66399-0	1-66331-4
▲ OBSOLETE	▲	▲	PHOSPHOR BRONZE	66399-5	1-66331-3
▲ OBSOLETE	▲	▲	BRASS	-	1-66331-2
▲ OBSOLETE	▲	▲	BRASS	-	1-66331-1
▲ OBSOLETE	▲	▲	BRASS	-	1-66331-0
▲	▲	▲	BRASS	-	66331-9
▲	▲	▲	BRASS	66399-4	66331-8
▲	▲	▲	BRASS	66399-3	66331-7
▲	▲	▲	BRASS	66399-2	66331-6
▲	▲	▲	BRASS	66399-1	66331-5
STANDARD	▲	▲	BRASS	66399-4	66331-4
STANDARD	▲	▲	BRASS	66399-2	66331-2
STANDARD	▲	▲	BRASS	66399-1	66331-1
REELING	▲	▲	BRASS	66399-1	66331-1

THIS DRAWING IS A CONTROLLED DOCUMENT. DATE: 08/06/91

DESIGNED BY: R. SHIBBY
 CHECKED BY: S. STONE
 APPROVED BY: J. WESTMAN
 PRODUCT SPEC: 9-20-91

TE Connectivity
 SOCKET ASSEMBLY, .062, TYPE III+

SIZE: A2
 CASE CODE: 00779
 DRAWING NO: 66331

MATERIAL: SEE CALLOUTS
 FINISH: SEE CALLOUTS

CUSTOMER DRAWING
 SCALE: 8:1
 SHEET: 1 of 1
 REV: W2

66331

A

W2