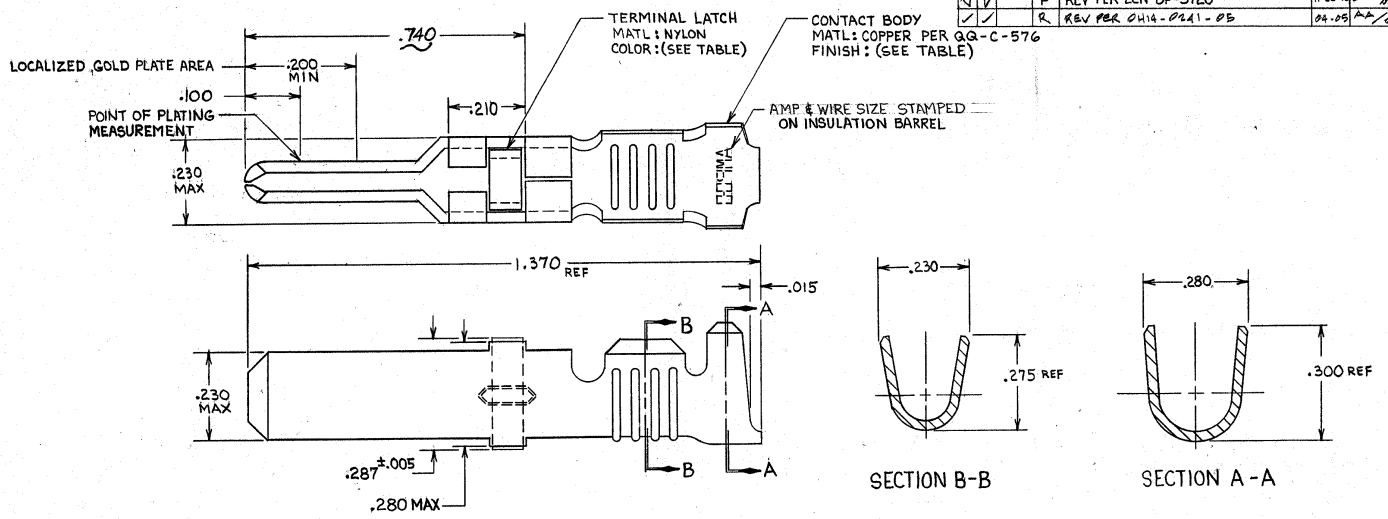


DRAWING MADE IN THIRD ANGLE PROJECTION

THIS DRAWING IS UNPUBLISHED. RELEASED FOR PUBLICATION
 © Copyright 19... BY AMP INCORPORATED, HARRISBURG, PA. ALL INTERNATIONAL RIGHTS RESERVED. AMP PRODUCTS MAY BE COVERED BY U.S. AND FOREIGN PATENTS AND/OR PATENTS PENDING.

REVISIONS					
P/F	ZONE	LTR	DESCRIPTION	DATE	APPROVED
✓	L		REDRAWN & REVISED PER ECN R-1451	7-30-85	<i>[Signature]</i>
✓	M		REV. ECN R-1946	8-1-85	MFM SLB
✓	N		OBSOLETE - 3 PER R-2760	3-4-87	SLB
✓	P		REV PER ECN DF-5920	11-25-91	ABM
✓	R		REV PER CH14-0241-05	04-05-92	AP/CE



- ▲ REELED FOR USE WITH STANDARD APPLICATORS.
- ▲ PLATED WITH .000100 MIN SILVER PER Q.Q.-5-345.
- ▲ PLATED WITH .000015 MIN GOLD PER MIL-G-45204 IN THE LOCALIZED GOLD PLATE AREA, GOLD FLASH ON THE REMAINDER, OVER .000030 MIN NICKEL PER Q.Q.-N-290.
- ▲ PLATED WITH .000030 MIN GOLD PER MIL-G-45204 IN THE LOCALIZED GOLD PLATE AREA, GOLD FLASH ON THE REMAINDER, OVER .000030 MIN NICKEL PER Q.Q.-N-290.
- ▲ PLATED WITH .000050 MIN 93-7% TIN-LEAD ALLOY OVER .000030 MIN NICKEL PER Q.Q.-N-290.
- 6. WIRE RANGE = 10 AWG.
- 7. INSULATION RANGE = .190 - .220 DIA.
- ▲ PLATED WITH .000050 MIN TIN PER ASTM-B-545 OVER .000030 MIN NICKEL PER Q.Q.-N-290.

BLACK	▲	66254-6	▲	66260-5
NATURAL	▲	66254-4	▲	66260-4
BLACK	▲	66254-5	▲	66260-3
BLACK	▲	66254-2	▲	66260-2
BLACK	▲	66254-1	▲	66260-1
TERMINAL LATCH FINISH		STRIP ASSY P/N REF		LOOSE PIECE P/N ASSY

UNLESS OTHERWISE SPECIFIED DIMENSIONS ARE IN INCHES. TOLERANCES ON: DECIMALS ±.010 ANGLES ±.010		CONTRACT NO		AMP AMP INCORPORATED Harrisburg, Pa. 17105	
MATERIAL SEE CALLOUT		DR <i>[Signature]</i> 7-27-85 CHKD <i>[Signature]</i> 10-25-85 APPD <i>[Signature]</i> 10-25-85 APPD <i>[Signature]</i> 10-25-85		NAME MALE TYPE XII GROUND CONTACT LOOSE PIECE ASSY	
FINISH SEE DASH NO		OTHER APPD		SIZE C	FSCM NO 00779
				DRAWING NO 66260	
				SCALE NTS	SHEET

CUSTOMER DRAWING

AMP 1471-B REV 2-81

66260

A