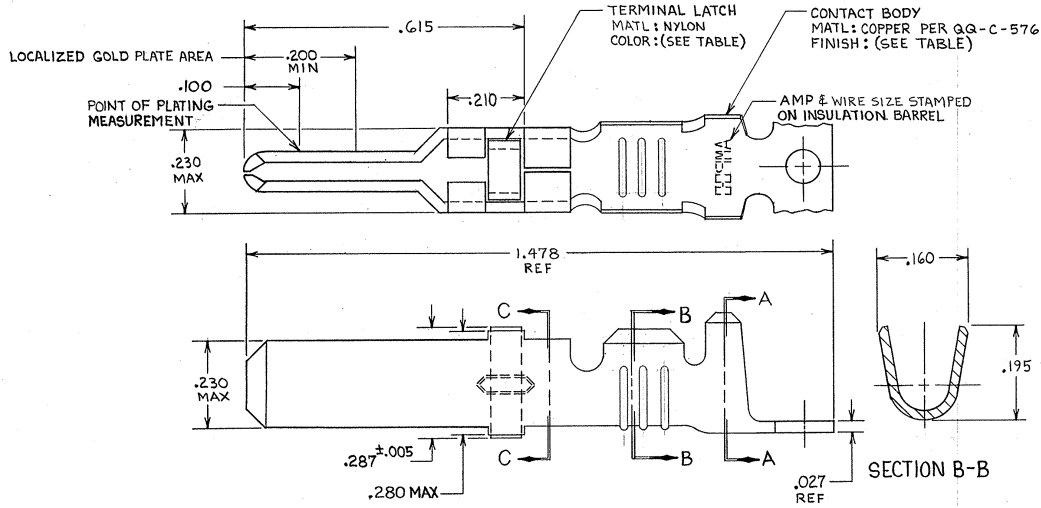


DRAWING MADE IN THIRD ANGLE PROJECTION

THIS DRAWING IS UNPUBLISHED. RELEASED FOR PUBLICATION  
 © COPYRIGHT

REVISIONS						
P	F	ZONE	LTR	DESCRIPTION	DATE	APPROVED
		Z1		REVISED PER ECO-11-005294	06APR11	HMR



- ▲ REELED FOR USE WITH STANDARD APPLICATORS.
- ▲ REELED FOR USE WITH HEAVY DUTY MINI-APPLICATORS.
- ▲ PLATED WITH .000100 MIN SILVER PER QQ-5-365.
- ▲ PLATED WITH .000015 MIN GOLD PER MIL-G-45204 IN THE LOCALIZED GOLD PLATE AREA, GOLD FLASH ON THE REMAINDER, OVER .000030 MIN NICKEL PER QQ-N-290.
- ▲ PLATED WITH .000030 MIN GOLD PER MIL-G-45204 IN THE LOCALIZED GOLD PLATE AREA, GOLD FLASH ON THE REMAINDER, OVER .000030 MIN NICKEL PER QQ-N-290.
- ▲ PLATED WITH .000050 MIN 93-7% TIN-LEAD ALLOY OVER .000030 MIN NICKEL PER QQ-N-290.
- 7. WIRE RANGE = 12-16 AWG.
- 8. INSULATION RANGE = .140-.165 DIA.
- ▲ PLATED TIN (NO LEAD) .000050 MIN THK PER ASTM-B-545 OVER NICKEL .000030 MIN THK PER QQ-N-290

BLACK	▲	66261-5	1-66255-2	▲
BLACK	▲	66261-5	1-66255-1	▲
NATURAL	NONE	7	1-66255-0	▲
NATURAL	NONE	7	66255-9	▲
NATURAL	▲	66261-4	66255-8	▲
NATURAL	▲	66261-4	66255-7	▲
BLACK	▲	66261-2	66255-6	▲
BLACK	▲	66261-1	66255-5	▲
BLACK	▲	<del>66261-3</del>	66255-4	▲
BLACK	▲	<del>66261-3</del>	66255-3	▲
BLACK	▲	66261-2	66255-2	▲
BLACK	▲	66261-1	66255-1	▲

UNLESS OTHERWISE SPECIFIED DIMENSIONS ARE IN INCHES. TOLERANCES ON: DECIMALS ±.010 ANGLES ±.010		CONTRACT NO			
MATERIAL SEE CALLOUT		DR <i>Rick Kallenberg</i> 7-27-85 CHK <i>Larry L. Lawrence</i> APPD <i>Rick Kallenberg</i> 10-1-85 APPD <i>Thomas D. Smith</i> 10-3-85			
FINISH SEE DASH NO		DSGN APPD		SIZE C	FSCM NO 00779
		OTHER APPD		DRAWING NO 66255	
				SCALE NTS	
				SHEET	

CUSTOMER DRAWING

66255

A