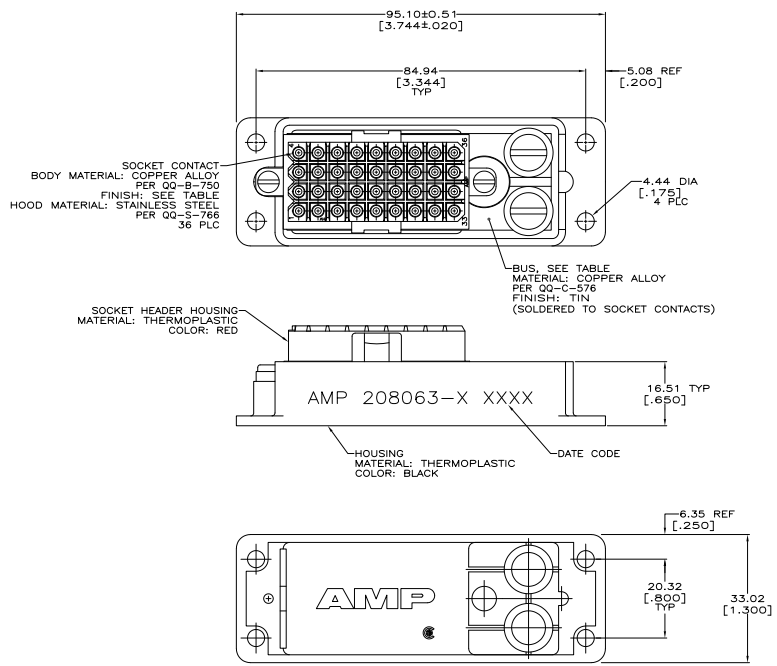


REVISED		REVISIONS	
REV	DATE	DESCRIPTION	BY
G	1/22/05	REVISED PER 0038-0188-05	SS GS
G1	11/29/09	REVISED PER ECO-09-020935	KK AED



- MATES WITH RECEPTACLE 207020-1.
- ▲ TIN-LEAD OVER NICKEL PER QQ-N-290.
 - ▲ GOLD FLASH PER MIL-G-45204 OVER 1.27µm [.000050] MIN NICKEL PER QQ-N-290 ON ENTIRE CONTACT, WITH 0.76µm [.000030] MIN GOLD PER MIL-G-45204 ON ELECTRICAL ENGAGEMENT AREA ONLY.
 - ▲ ALL CIRCUITS COMMONED TO BUS.
 - ▲ CONNECTOR IS DIVIDED LENGTHWISE WITH CIRCUITS 1, 2, 5, 6, 9, 10, 13, 14, 17, 18, 21, 22, 25, 26, 29, 30, 33 AND 34 COMMONED, AND CIRCUITS 3, 4, 7, 8, 11, 12, 15, 16, 19, 20, 23, 24, 27, 28, 31, 32, 35 AND 36 COMMONED.
 - ▲ WILL ACCEPT RING TONGUE TERMINALS, STUD SIZE 10.
 - ▲ TIN OVER NICKEL PER QQ-N-290.
 - ▲ OBSOLETE PARTS: OBSOLETE CIS STREAMLINING PER D.RENAUD/D.SINISI

OBSCLETE	DUAL, 18 POSITION	▲	▲	▲	208063-7
OBSCLETE	DUAL, 18 POSITION	▲	▲	▲	208063-6
	FULL, 36 POSITION	▲	▲	▲	208063-5
	DUAL, 18 POSITION	▲	▲	▲	208063-4
OBSCLETE	FULL, 36 POSITION	▲	▲	▲	208063-3
	DUAL, 18 POSITION	▲	▲	▲	208063-2
	FULL, 36 POSITION	▲	▲	▲	208063-1
	BUS TYPE	TAIL FINISH	POST FINISH		PART NO

THIS DRAWING IS A CONTROLLED DOCUMENT.		DATE	REV	BY	APP	DATE	REV	BY	APP
DESIGNED	DESIGNED								
DRW	DRW								
CHK	CHK								
APP	APP								
SEE CALLOUTS	SEE CALLOUTS								
		SIZE	DATE	ISSUE	DRAWING NO				RESTRICTED TO
		A1	00779	G=208063					
		CUSTOMER DRAWING	DATE	REV	BY	APP			
			2-1						G1