

4

3

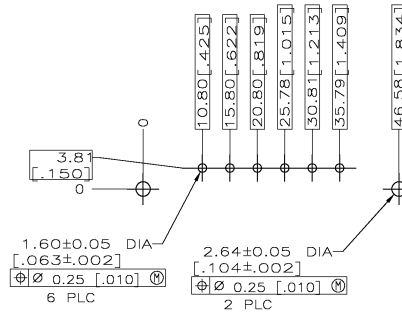
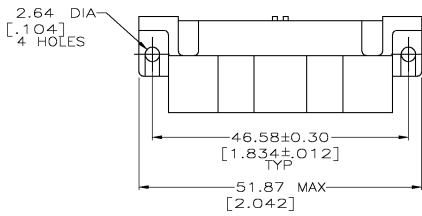
MDO

2

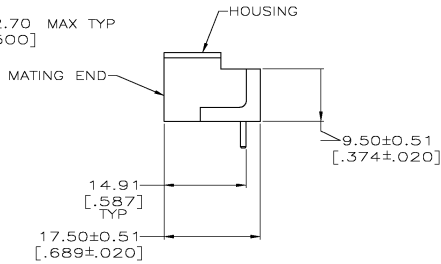
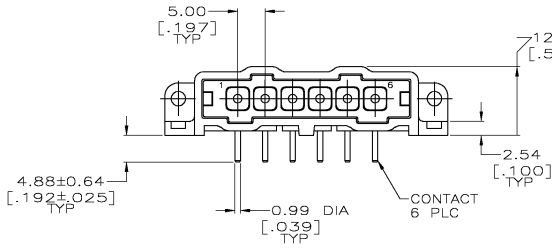
1

THIS DRAWING IS UNPUBLISHED. RELEASED FOR PUBLICATION  
 © COPYRIGHT BY TYCO ELECTRONICS CORPORATION. ALL RIGHTS RESERVED.

LOC		DIST		REVISIONS			
P	LTR	DESCRIPTION	DATE	MIN	APPROV		
K		OG3B-035B-03	02MAY03	TK	GS		



RECOMMENDED PC BOARD LAYOUT



- ▲ NYLON, RED.
- ▲ BRASS PER ASTM B36.
- ▲ 3.8 $\mu$ m [.000150] MIN TIN-LEAD OVER 2.54 $\mu$ m [.000100] MIN COPPER OR 1.27 $\mu$ m [.000050] MIN NICKEL.
- ▲ 0.76 $\mu$ m [.000030] MIN GOLD FOR A LENGTH OF 5.08 [.200] MIN FROM MATING END, 3.8 $\mu$ m [.000150] MIN TIN-LEAD FOR A LENGTH OF 5.51 [.217] MIN FROM OPPOSITE END, BOTH OVER 1.27 $\mu$ m [.000050] MIN NICKEL.
- ▲ .000150 MIN TIN OVER .000100 MIN CU, OR .000050 MIN TIN.
- ▲ 0.76 $\mu$ m [.000030] MIN GOLD FOR A LENGTH OF 5.08 [.200] MIN FROM MATING END, 3.8 $\mu$ m [.000150] MIN TIN FOR A LENGTH OF 5.51 [.217] MIN FROM OPPOSITE END, BOTH OVER 1.27 $\mu$ m [.000050] MIN NICKEL.

▲	207378-7
▲	207378-6
▲	207378-3
▲	207378-1
FINISH	PART NO

THIS DRAWING IS A CONTROLLED DOCUMENT.		DATE: 07/07/92	Tyco Electronics Corporation Harrisburg, Pa
DRAWN BY: L. SIEP		7-24-92	
CHECKED BY: S. STONE		7-24-92	PIN HEADER ASSEMBLY, 6 POSN. IN-LINE, RIGHT ANGLE, SMALL METRIC CONNECTOR, METRIMATE
APPROVED BY: A. TRAVIS		7-24-92	
DIMENSIONS: INCHES		PRODUCT SPEC	RESTRICTED TO
MATERIAL: HOUSING: ▲		APPLICATION SPEC	
FINISH: ▲		HEIGHT	SCALE: 2:1 SHEET 1 OF 1 REV K
CONTACTS: SEE TBL		CUSTOMER DRAWING	

AMP 1471-9 REV 31 MAR 2000

H:\dmdm\A

207378

A