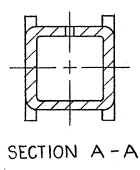
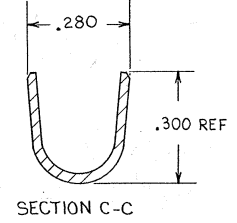
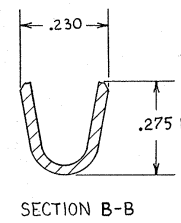
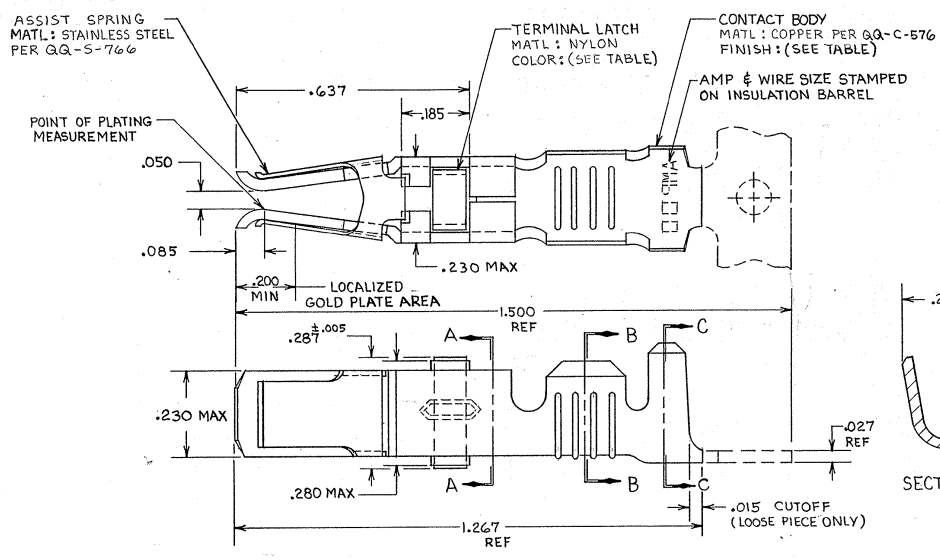


DRAWING MADE IN THIRD ANGLE PROJECTION

THIS DRAWING IS UNPUBLISHED. RELEASED FOR PUBLICATION

© COPYRIGHT BY

REVOLUTIONS		DATE	APPROVED
P	F		
	G1	REVISED PER ECO-11-005294	HMR



- ▲ REELED FOR USE WITH STANDARD APPLICATORS.
  - ▲ REELED FOR USE WITH HEAVY DUTY MINI-APPLICATORS.
  - ▲ PLATED WITH .000100 MIN SILVER PER QQ-S-365.
  - ▲ PLATED WITH .000015 MIN GOLD PER MIL-G-45204 IN THE LOCALIZED GOLD PLATE AREA, GOLD FLASH ON THE REMAINDER, OVER .000030 MIN NICKEL PER QQ-N-290.
  - ▲ PLATED WITH .000030 MIN GOLD PER MIL-G-45204 IN THE LOCALIZED GOLD PLATE AREA, GOLD FLASH ON THE REMAINDER, OVER .000030 MIN NICKEL PER QQ-N-290.
  - ▲ PLATED WITH .000050 MIN 93-7% TIN-LEAD ALLOY OVER .000030 MIN NICKEL PER QQ-N-290.
7. WIRE RANGE = 10 AWG.
8. INSULATION RANGE = .190-.220 DIA.

▲ PLATED TIN (NO LEAD) .000050 MIN THK PER ASTM-B-545 OVER NICKEL .000030 MIN THK PER QQ-N-290.

BLACK	▲	2-66741-1	2-66741-0	▲
BLACK	▲	2-66741-1	1-66741-9	▲
BLACK	▲	66741-8	1-66741-2	▲
BLACK	▲	66741-6	1-66741-1	▲
BLACK	▲	<del>66741-6</del>	1-66741-0	▲
NATURAL	▲	66741-2	66741-9	▲
BLACK	▲	66741-8	66741-7	▲
BLACK	▲	66741-6	66741-5	▲
BLACK	▲	<del>66741-6</del>	66741-3	▲
NATURAL	▲	66741-2	66741-1	▲

UNLESS OTHERWISE SPECIFIED DIMENSIONS ARE IN INCHES. TOLERANCES ON: DECIMALS $\pm .010$ ANGLES $\pm .010$		CONTRACT NO.		TE Connectivity <b>FEMALE TYPE XII CONTACT ASSEMBLY, WITH ASSIST SPRING</b>	
MATERIAL SEE CALLOUT		DR <i>Rick Pollock</i> 9-25-85 CHK <i>B. Pollock</i> 10-15-85 APPD <i>Rebecca Smith</i> 10/16/87			
FINISH SEE DASH NO		OTHER APPD		SIZE <b>C</b>	FSCM NO <b>00779</b>
				DRAWING NO <b>66741</b>	SHEET
				SCALE <i>NTS</i>	

CUSTOMER DRAWING