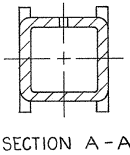
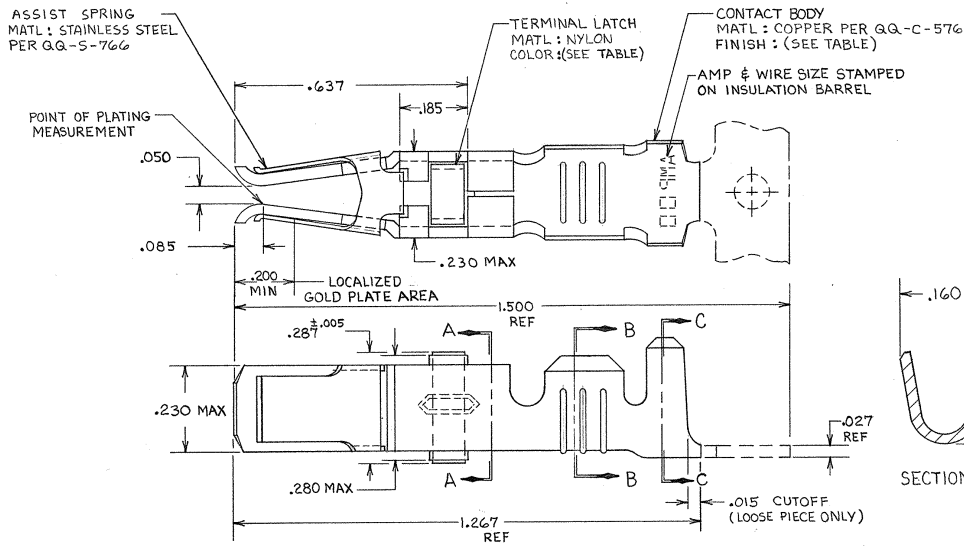


DRAWING MADE IN THIRD ANGLE PROJECTION
 THIS DRAWING IS UNPUBLISHED. RELEASED FOR PUBLICATION
 © COPYRIGHT

REVISIONS					5016	LOC OF 120	DIS 1
P	F	ZONE	LTR	DESCRIPTION	DATE	APPROVED	
✓	✓		F1	REVISED PER ECO-11-005294	25APR11	HMR	



SECTION A - A

- 1. REELED FOR USE WITH STANDARD APPLICATORS.
- 2. REELED FOR USE WITH HEAVY DUTY MINI-APPLICATORS.
- 3. PLATED WITH .000100 MIN SILVER PER Q.Q.-S-365.
- 4. PLATED WITH .000015 MIN GOLD PER MIL-G-45204 IN THE LOCALIZED GOLD PLATE AREA, GOLD FLASH ON THE REMAINDER, OVER .000030 MIN NICKEL PER Q.Q.-N-290.
- 5. PLATED WITH .000030 MIN GOLD PER MIL-G-45204 IN THE LOCALIZED GOLD PLATE AREA, GOLD FLASH ON THE REMAINDER, OVER .000030 MIN NICKEL PER Q.Q.-N-290.
- 6. PLATED WITH .000050 MIN 93-7% TIN-LEAD ALLOY OVER .000030 MIN NICKEL PER Q.Q.-N-290.
- 7. WIRE RANGE = 12-16 AWG.
- 8. INSULATION RANGE = .140-.165 DIA.

9. PLATED TIN (NO LEAD), .000050 MIN THK PER ASTM-B-595 OVER NICKEL, .000030 MIN THK PER QQ-N-290.

TERMINAL LATCH COLOR	FINISH	LOOSE PIECE PART NO	STRIP PART NO
BLACK	Δ	2-66740-1	2-66740-0
BLACK	Δ	2-66740-1	1-66740-9
BLACK	Δ	66740-8	1-66740-2
BLACK	Δ	66740-6	1-66740-1
BLACK	Δ	66740-0	1-66740-0
NATURAL	Δ	66740-2	66740-9
BLACK	Δ	66740-8	66740-7
BLACK	Δ	66740-6	66740-5
BLACK	Δ	66740-0	66740-3
NATURAL	Δ	66740-2	66740-1

UNLESS OTHERWISE SPECIFIED DIMENSIONS ARE IN INCHES. TOLERANCES ON: DECIMALS ±.010 ANGLES		CONTRACT NO	TE Connectivity	
MATERIAL SEE CALLOUT		DR <i>R. Balach</i> 9-25-85	NAME FEMALE TYPE XII CONTACT ASSEMBLY, WITH ASSIST SPRING	
FINISH SEE DASH NO		CHK <i>S.R. Balach</i> 10-15-85	SIZE C	FSCM NO 00779
		APPD <i>S.R. Balach</i> 10-15-85	DRAWING NO 66740	SHEET
		DSGN APPD	SCALE <i>NTS</i>	
		OTHER APPD	CUSTOMER DRAWING	

66740

A