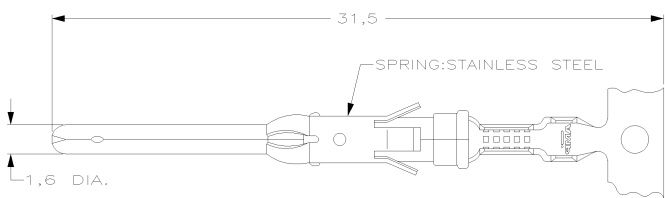
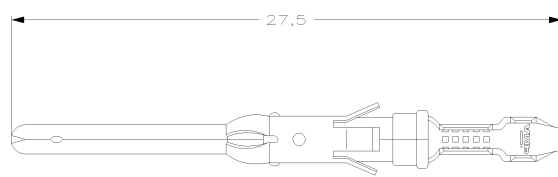


DO NOT SCALE
DIMENSIONS IN mm

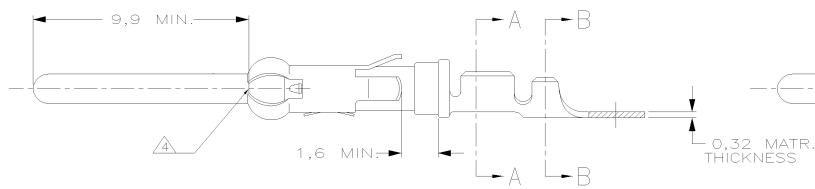
METRIC



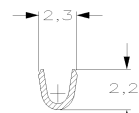
STRIP



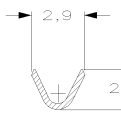
LOOSE-PIECE



COLOR CODE: YELLOW



SECTION A-A



SECTION B-B

WIRE RANGE : 0,20-0,50 mm (24-20 AWG)
INSUL. RANGE : 1,1 -1,8 mm (.045-.070)

1-163085-4	1-163086-1	BRASS	EL.TIN
1-163085-3	1-163086-3	BRASS	BR. TIN
5-163085-3		BRASS	ECON.GOLD
5-163085-2		BRASS	SEL.GOLD
5-163085-1		BRASS	EL.TIN
1-163085-2		BRASS	GOLD
1-163085-1		BRASS	ECON.GOLD
1-163085-0	1-163086-0	BRASS	ECON.GOLD
163085-9		BRASS	EL.TIN
163085-8		BRASS	SEL.GOLD
163085-2	163086-2	BRASS	SEL.GOLD
163085-1	163086-1	BRASS	EL.TIN

AMPOMATOR + MINI-APPL 107-3-FIG.1	A
107-3-FIG.2	B
107-3-FIG.4	C

NOTES	MATERIAL	THICKNESS	AREA
1	TIN	2,0 µm	ALL OVER
2	NICKEL		ALL OVER
3	GOLD	0,8 µm	CONTACT AREA
4	TIN		BARREL
5	NICKEL		ALL OVER
6	GOLD	0,8 µm	CONTACT AREA
7	GOLD		ALL OVER
8	NICKEL		ALL OVER
9	GOLD	1,2 µm	CONTACT AREA
10	GOLD		ALL OVER
11	NICKEL		ALL OVER
12	SILVER	2,5 µm	CONTACT AREA
13	TIN		BARREL
14	SILVER	0,5 µm	ALL OVER
15	SILVER	2,5 µm	ALL OVER
16	NICKEL	1,27 µm	ALL OVER
17	BRIGHT TIN	1,27 µm	ALL OVER
18	LUBRICATED		

- NOTES :
- 1 U.L.RECONIZED UNDER FILE E28476 VOL.VI SEC.1
 - 2 FOR CRIMPDETAILS SEE AMP-SPEC. 114-19.000 .
 - 3 MEETS PRODUCTSPECIFICATION 108-10042.
 - 4 0,40 MAX. GAP BETWEEN SPRING-NOSE AND CONTACT BODY.
 - 5 SPECIAL REEL WITH 200 PCS FOR REEL-FED HAND-TOOL
 - 6 OBSOLETE PARTS; OBSOLETE CIS STREAMLINING PER D.RENAUD/D.SINISI

CUSTOMER DRAWING FOR REFERENCE ONLY WILL NOT BE UPDATED

THIS DRAWING IS UNPUBLISHED RELEASED FOR PUBLICATION 19



NAME: TYPE_III_PIN_CONTACT SIZE_16

86-128 (REV.04-91)	8	7	6	5	4	3	2	1
--------------------	---	---	---	---	---	---	---	---

AC2	REVISED PER ECO-11-005150	RK	HMR	28MAR11	DWG.No. 163085	REV.LTR. AC2	SHEET 1 OF 1	A3
-----	---------------------------	----	-----	---------	----------------	--------------	--------------	----