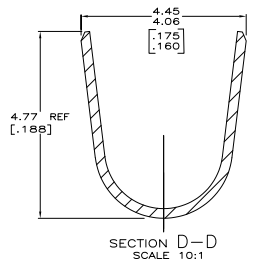
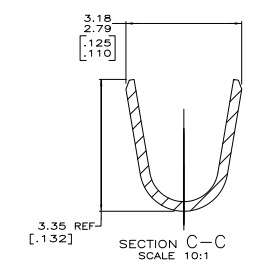
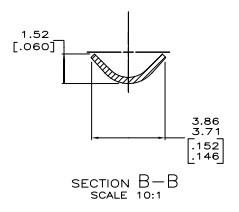
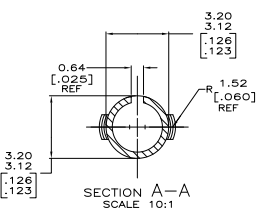
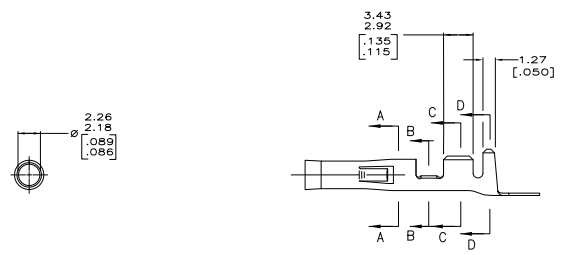


- 1 WIRE RANGE: 0.5-2mm<sup>2</sup> (20-14 AWG).
  - 2 INSULATION RANGE: 3.56 [.140] MAX. DIA.
  - 3 DIMENSIONS IN BRACKETS ARE IN INCHES.
- △ 0.00076 [.000030] MIN GOLD STRIPE OVER  
0.00127 [.000050] MIN NICKEL ON INSIDE OF SOCKET.



|         |                      |          |
|---------|----------------------|----------|
| PRE-TIN | 0.25 [.010] PHOS BRZ | 350415-6 |
| △       | 0.25 [.010] BRASS    | 350415-5 |
| PRE-TIN | 0.25 [.010] BRASS    | 350415-1 |
| FINISH  | MATERIAL             | PART NO  |

|  |           |             |            |                 |
|--|-----------|-------------|------------|-----------------|
| THIS DRAWING IS A CONTROLLED DOCUMENT. |           | DR. BENTLEY | PRODUCTION | TE Connectivity |
| APPROVED FOR RELEASE:                  |           | DR. COLEY   | PRODUCTION |                 |
| UNLESS OTHERWISE SPECIFIED:            |           | DR. COLEY   | PRODUCTION |                 |
| FINISH                                 |           | DR. COLEY   | PRODUCTION |                 |
| OPERATION SPEC                         |           |             |            |                 |
| SIZE                                   | DATE SIZE | DRAWING NO. |            |                 |
| SEE TABLE                              | SEE TABLE | SEE TABLE   | SEE TABLE  |                 |
| CUSTOMER DRAWING                       |           | A100779     | G=350415   | REWORKED TO     |
|  |           | TABLE 8.1   | SHEET 1    | OF 1            |