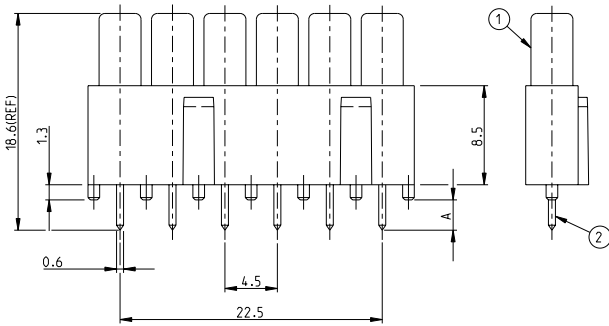
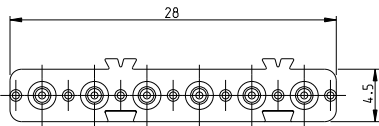


THIS DRAWING IS UNPUBLISHED. RELEASED FOR PUBLICATION  
 © COPYRIGHT 2000 BY TYCO ELECTRONICS CORPORATION. ALL RIGHTS RESERVED.

LOC	DIST	REVISIONS			
P	LTR	DESCRIPTION	DATE	DNW	APVD
A4	-	Released as per ECR-08-003808	14.2.2008	CJ	TS



0-2	3.4±0.05
0-1	2.6±0.05
PN	'A' in mm

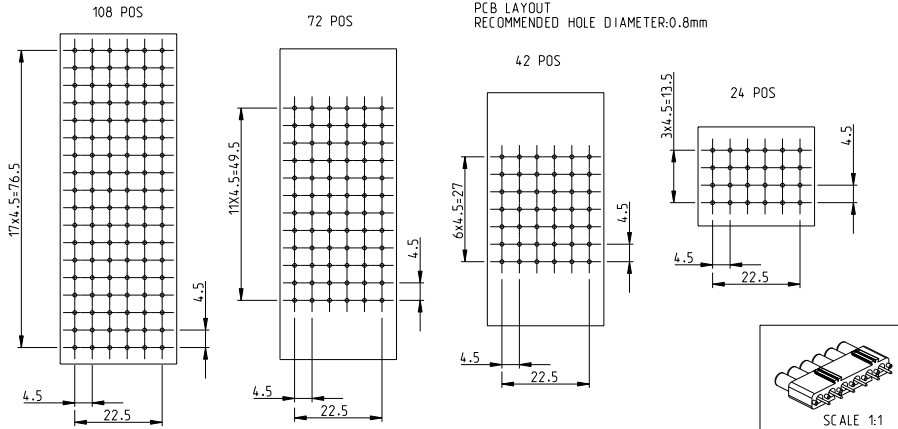
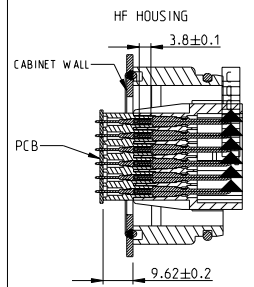
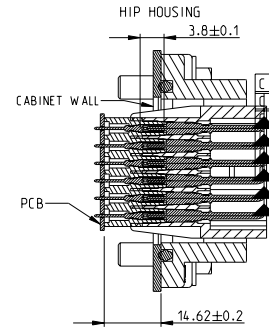
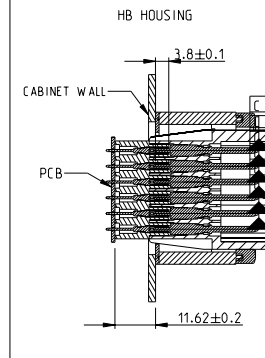
- NOTES:
- 1 PACKAGING: 24 PIECES PER BAG
  - 2 STANDARDS: DIN EN 61984; DIN EN 60664-1
  - 3 SUITABLE HOUSING SERIES: HN.2D INSERTS

ASSEMBLY CONDITION

HOUSING TYPE	RECOMMENDED DIST B/W CABINET WALL AND PCB	CONTACT OVERLAP
HB	11.62±0.2	3.8±0.1
HF	14.26±0.2	3.8±0.1
HIP	9.62±0.2	3.8±0.1

PN: 0-1 as shown  
 ORDERING TEXT: ADP.HN.D.6

-	6	PIN CONTACT	BRASS	SILVER PLATED	2
1	1	ADAPTER HOUSING HN.D-6	PBT-GF15	SURFACE	1
0-2	0-1	DESCRIPTION	MATERIAL	SURFACE	ITEM
PART LIST					



THIS DRAWING IS A CONTROLLED DOCUMENT FOR TYCO ELECTRONICS CORPORATION  
 IT IS SUBJECT TO CHANGE AND THE CONTROLLING ENGINEERING ORGANIZATION  
 SHOULD BE CONTACTED FOR THE LATEST REVISION.

DIMENSIONS:		TOLERANCES UNLESS OTHERWISE SPECIFIED:	
mm			
0 PLC	±	0.25	±
1 PLC	±	0.25	±
2 PLC	±	0.25	±
3 PLC	±	0.25	±
4 PLC	±	0.25	±
ANGLES	±		
MATERIAL		FINISH	
4		5	

OWN	P. BENNUR	1/3/2006
CHK	R. SRINIVAS	1/3/2006
APVD	T. SCHNURPFEL	1/3/2006
PRODUCT SPEC	108-74059	
APPLICATION SPEC	114-74059	
WEIGHT		
CUSTOMER DRAWING		

Tyco Electronics, AMP, GmbH D-53819, Neunkirchen, Germany	
<b>ADAPTER HOUSING ASSY</b> ADP.HN.D.6	
SIZE	A3
CAGE CODE	00779
DRAWING NO	1108798
RESTRICTED TO	
SCALE	3:1
SHEET	1 OF 1
REV	A4