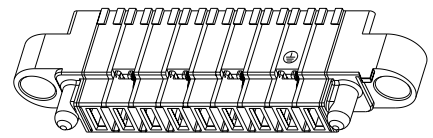
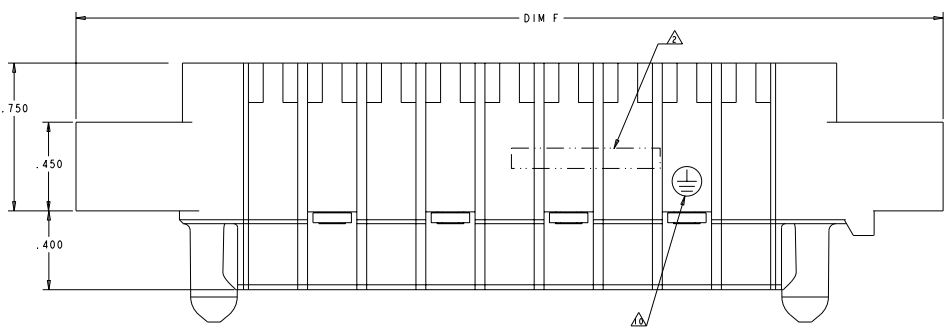
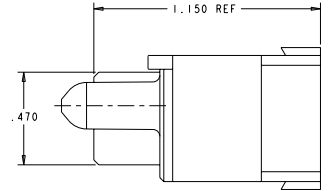
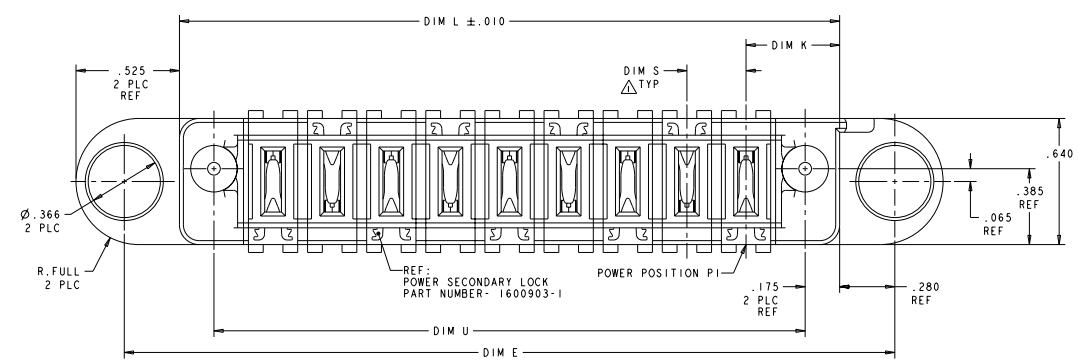


REV	DATE	DESCRIPTION	BY	CHK	APP
D1		ADD NEW DASH NUMBER			
D2		REVISED			



SCALE 2:1



- △ DIM S IS CENTERLINE SPACING OF POWER MODULES.
- △ COMPANY TRADEMARK, PART NUMBER, AND DATE CODE TO BE MARKED IN AREA SHOWN PARTS UNDER 2.00 LONG MAY BE MARKED ON BOTH SIDES.
- 3. MATERIAL: THERMO PLASTIC, UL94 V-0-BLACK.
- △ DATUM LOCATIONS AND BASIC DIMENSIONS TO BE ESTABLISHED BY THE CUSTOMER.
- △ BULKHEAD THICKNESS RANGE: .031 - .100.
- △ CONNECTOR MATED TO PANEL FROM OPPOSITE SIDE.
- △ NO BURRS ALLOWED ON OPPOSITE (MATING) SIDE.
- △ CONNECTOR KEEP OUT ZONE.
- △ MOUNT CONNECTOR WITH TYCO HARDWARE KIT P/N 1600914-1 FOR .050 (1.27mm) MIN RADIAL FLOAT.
- △ LOCATION OF GROUND SYMBOL ON MFBL CAVITY, FOR 1600606-2 ONLY.
- △ THE SPECIAL BULKHEAD LAYOUT IS ONLY FOR PN:1600606-2 WITH RESTRICT FLOATING.

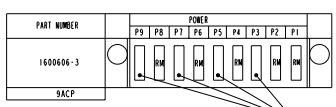
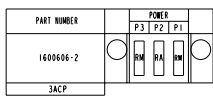
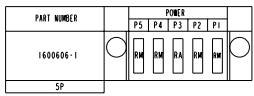
②	2.050	.300	2.400	.450	2.960	3.450	6ACP	1600606-8
	2.100	.300	2.450	.475	3.010	3.500	6ACP	1600606-7
	2.825	.425	3.175	.525	3.735	4.225	6ACP	1600606-6
	2.500	.300	2.850	.525	3.410	3.900	7ACP	1600606-5
	1.900	.300	2.250	.525	2.810	3.300	5ACP	1600606-4
	3.000	.300	3.350	.475	3.910	4.400	9ACP	1600606-3
	1.200	.300	1.550	.475	2.110	2.600	3ACP	1600606-2
	1.550	.250	1.900	.450	2.460	2.950	5P	1600606-1
DIM U	DIM S	DIM L	DIM K	DIM E	DIM F		DESCRIPTION	PART NUMBER

THIS DRAWING IS A CONTROLLED DOCUMENT. DATE: 25 JUL 2003. BY: CORRELL.

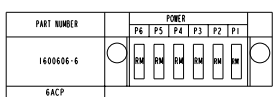
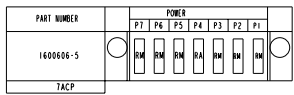
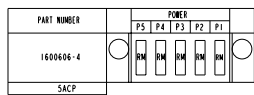
TE Connectivity
STE
 PANEL MOUNT CABLE RECEPTACLE HOUSING WITH GUIDES MULTI-BEAM PL. ALL POWER

168-2157
 PRODUCTION DOC
 114-13112
 STATE CASE CODE DRAWING NO: A100779 ©-1600606

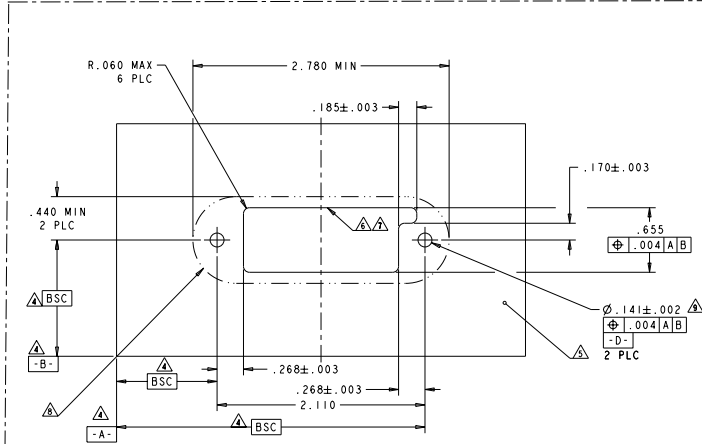
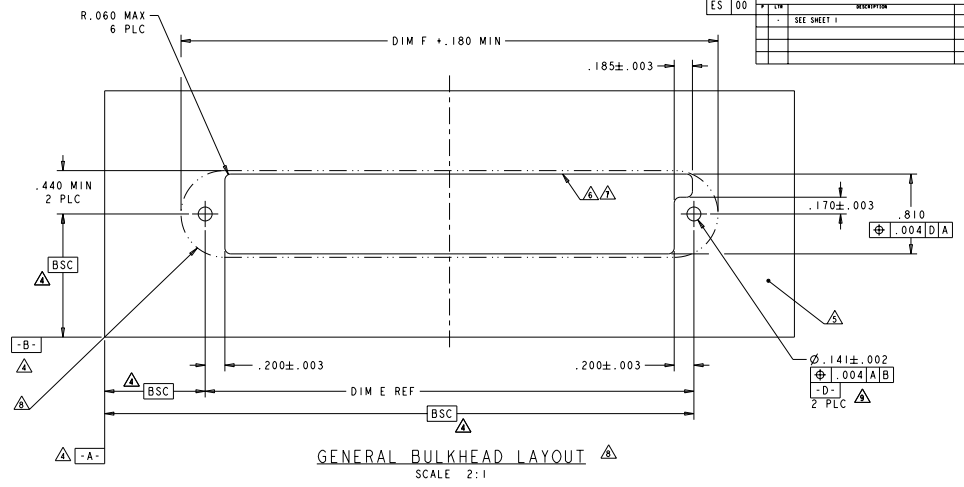
CUSTOMER DRAWING PAGE 2:1 OF 3



NO CONTACTS LOADED



REFERENCE WIRE CHART AND CONTACTS		
HOUSING MODULE	CONTACT	INSULATION DIAMETER RANGE
.300 POWER	8-10 1600960 REF	[.176-.272]
.250 POWER	8-10 1600960 REF	[.176-.203]
	12-14 1600961 REF	[.156-.176]
.200 POWER	12-14 1600961 REF	[.120-.156]
.100 SIGNAL	22-26 531216-5 REF	[.036-.069]



P/N: 1600606-2 SPECIAL BULKHEAD LAYOUT
 FOR P/N:1600606-2 RESTRICT A ,B FLOATING ONLY
 SCALE 2:1

REVISIONS			
REV	DATE	DESCRIPTION	BY
ES	00	SEE SHEET 1	

RM	STANDARD POWER CONTACT
RA	MFBL POWER CONTACT
CODE	DESCRIPTION
CONTACT TABLE	

THIS DRAWING IS A CONTROLLED DOCUMENT. DATE: 08/27/2003 BY: CORBELL

UNIT: INCHES	DATE: 08/27/2003	REV: 00
DESIGNED BY: CORBELL	PROJECT NO: 188-2157	REV: 00
DRAWN BY: CORBELL	PRODUCTION DOC: 116-13112	REV: 00
CHECKED BY: CORBELL	REV: 00	REV: 00
DATE: 08/27/2003	REV: 00	REV: 00

TE Connectivity
STE
 PANEL MOUNT CABLE RECEPTACLE HOUSING WITH GUIDES MULTI-BEAM PL. ALL POWER
 SIZE: 1.00779 (1600606)
 CUSTOMER DRAWING: 1600606

