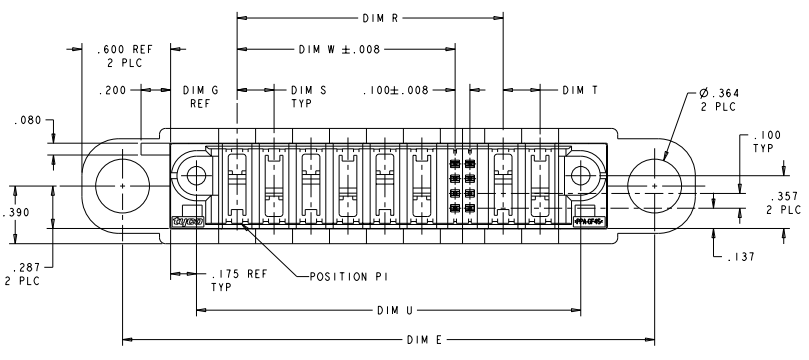
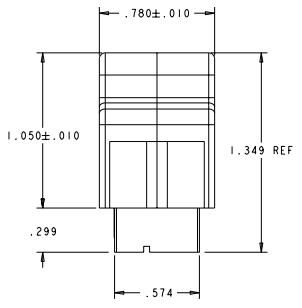
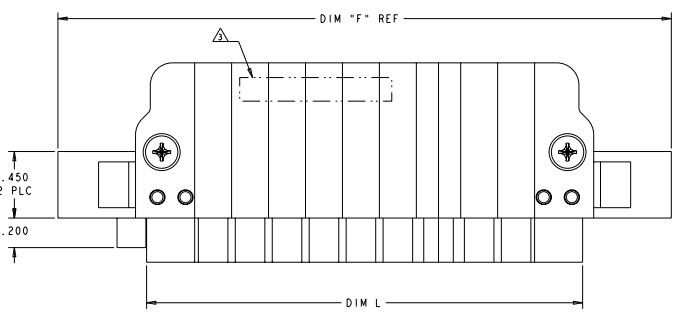


ISOMETRIC VIEW
SCALE: 2:1

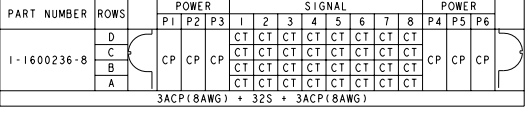
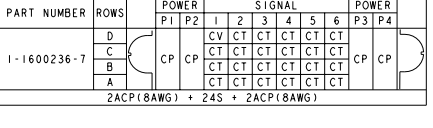
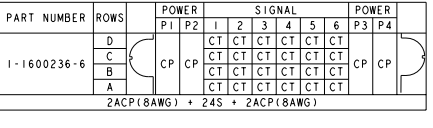
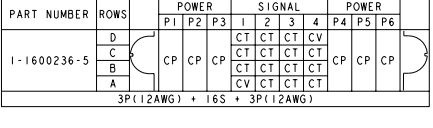
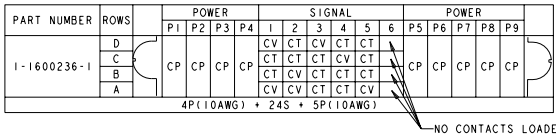
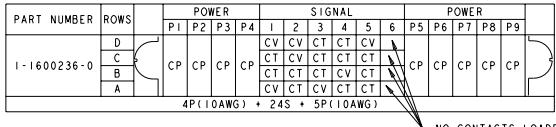
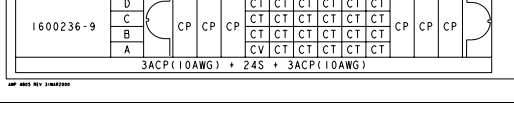
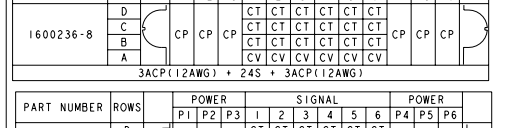
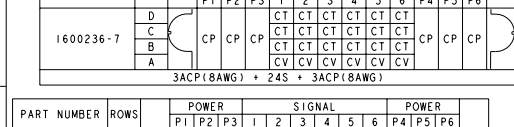
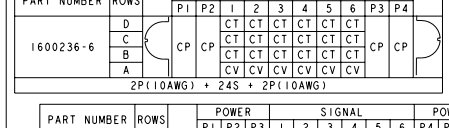
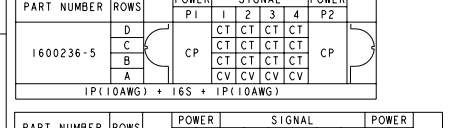
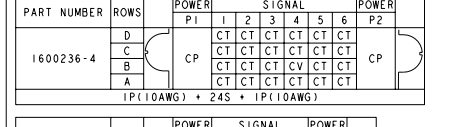
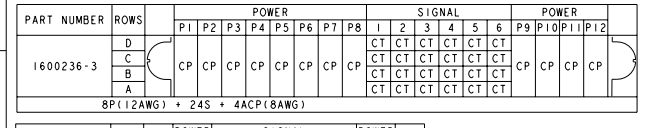
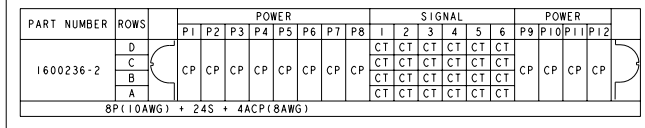
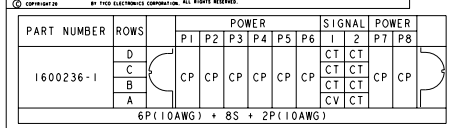
- △ CLAMSHELLS AND HEADER HOUSING: THERMO PLASTIC, UL94 V-0, CONTACTS: COPPER ALLOY; SCREWS: STEEL.
- △ CONTACTS: .000030 MIN GOLD IN MATING AREA, .000050 MIN TIN IN CRIMP AREA, BOTH OVER .000050 MIN NICKEL ALL OVER; SCREWS: ZINC.
- △ TE PART NUMBER AND DATE CODE MARKED IN AREA.
- △ CONNECTOR KEEP OUT ZONE.
- △ CONNECTOR MATED TO PANEL FROM OPPOSITE SIDE.
- △ NO BURRS ALLOWED ON OPPOSITE (MATED) SIDE.
- △ DATUM LOCATIONS AND BASIC DIMENSIONS TO BE ESTABLISHED BY CUSTOMER.
- △ MOUNT CONNECTOR WITH TE HARDWARE KIT 1600914-1 FOR .050 (1.27mm) MIN RADIAL FLOAT.

REV	DESCRIPTION	DATE	BY	CHKD
C	REV PER ECR-10-004039			
D	REV PER ECR-10-013809			
E	ADD DASH NUMBER 11-B			



.850	3.000	.300	.300	1.800	3.350	.475	4.550	4.000	3ACP(8AWG) + 32S + 3ACP(8AWG)	I-1600236-8
.550	2.200	.300	.300	1.300	2.550	.475	3.750	3.200	2ACP(8AWG) + 24S + 2ACP(8AWG)	I-1600236-7
.725	2.300	.250	.250	1.250	2.650	.450	3.850	3.300	3P(12AWG) + 16S + 3P(12AWG)	I-1600236-6
.975	3.250	.250	.250	1.700	3.600	.450	4.800	4.250	4P(10AWG) + 24S + 5P(10AWG)	I-1600236-1
.975	3.250	.250	.250	1.700	3.600	.450	4.800	4.250	4P(10AWG) + 24S + 5P(10AWG)	I-1600236-0
.850	2.800	.300	.300	1.600	3.150	.475	4.350	3.800	3ACP(10AWG) + 24S + 3ACP(10AWG)	1600236-9
.850	2.800	.300	.300	1.600	3.150	.475	4.350	3.800	3ACP(12AWG) + 24S + 3ACP(12AWG)	1600236-8
.850	2.800	.300	.300	1.600	3.150	.475	4.350	3.800	3ACP(8AWG) + 24S + 3ACP(8AWG)	1600236-7
.475	2.000	.250	.250	1.200	2.350	.450	3.550	3.000	2P(10AWG) + 24S + 2P(10AWG)	1600236-6
.225	1.300	-	-	.750	1.650	.450	2.850	2.300	1P(10AWG) + 16S + 1P(10AWG)	1600236-5
.225	1.575	-	-	.950	1.925	.475	3.125	2.575	1P(10AWG) + 24S + 1P(10AWG)	1600236-4
1.975	4.200	.300	.250	2.725	4.550	.450	5.750	5.200	8P(10AWG) + 24S + 4ACP(8AWG)	1600236-3
1.975	4.200	.300	.250	2.725	4.550	.450	5.750	5.200	8P(10AWG) + 24S + 4ACP(8AWG)	1600236-2
1.475	2.600	.250	.250	1.800	2.950	.450	4.150	3.600	6P(10AWG) + 8S + 2P(10AWG)	1600236-1

TECHNICAL SPECIFICATIONS		PART INFORMATION		CUSTOMER INFORMATION	
INCHES	0.001	PART NUMBER	1600236	DATE	08/10/2018
PLC	0.005	REV	11-B	STATE	CA
PLC	0.010	MANUFACTURER	TECH ELECTRONICS CORPORATION	QUANTITY	1
PLC	0.020	DESCRIPTION	PANEL MOUNT CABLE PLUG, WITH GUIDES, TYPE PSP, MULTI-BEAM XL	REVISION	11-B
PLC	0.050	DATE CODE	00779	DATE	08/10/2018
PLC	0.100	DATE CODE	00779	DATE	08/10/2018



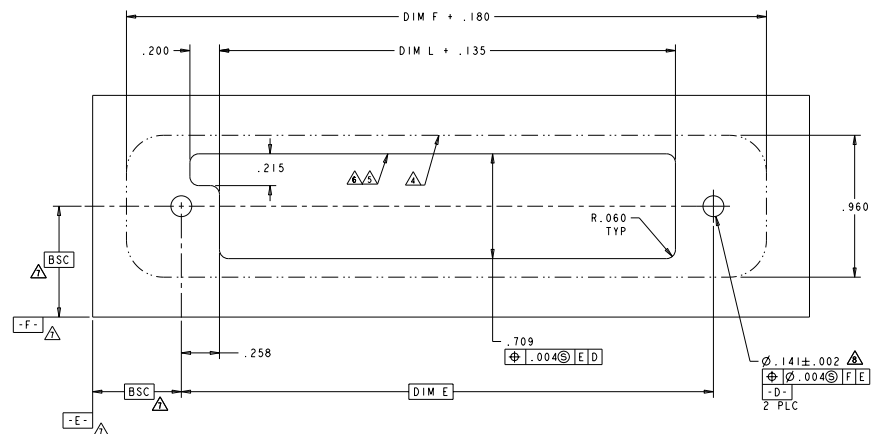
MLBF STANDARD	SIGNAL CONTACT	CV
-	SIGNAL CONTACT	CT
-	POWER CONTACT	CP

MATING SEQUENCE	DESCRIPTION	IDENTIFIER

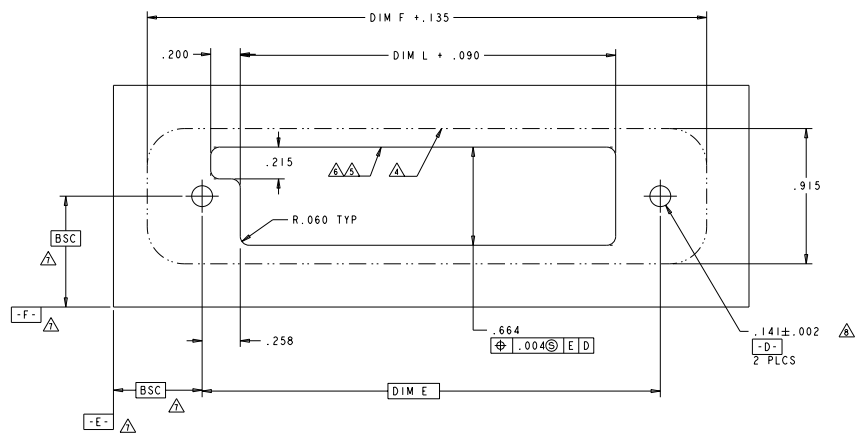
MILLIMETERS INCHES PART NUMBER REV. NO. DATE DRAWN BY CHECKED BY APPROVED BY	1600236-0 1600236-1 1600236-2 1600236-3 1600236-4 1600236-5 1600236-6 1600236-7 1600236-8 1600236-9	1600236-0 1600236-1 1600236-2 1600236-3 1600236-4 1600236-5 1600236-6 1600236-7 1600236-8 1600236-9	Type Electronics Corporation Sausalito, P.O. Box 200230
---	--	--	--

STATE	CAGE CODE	QUANTITY	REVISION
A	00779	1600236	1

REV	DATE	DESCRIPTION	BY	CHK	APP
ES	00	SEE SHEET 1			



PANEL CUTOUT:
WHEN MATING TO BOARD MOUNT RECEPTACLE
AND PMT CABLE RECEPTACLE



PANEL CUTOUT:
WHEN MATING TO SLIDE-TO-LOCK CABLE RECEPTACLE

TITLE BLOCK INCHES DATE: 03/27/79 BY: JRM CHECKED: JRM DATE: 04/11/79 DRAWN: JRM DATE: 03/27/79 SPECIFICATION NO: 114-131EE MATERIAL: A CUSTOMER DRAWING		PART NO: 16002004 REV: 1 QUANTITY: 16002004 UNIT: 16002004 PART NAME: PANEL MOUNT CABLE PLUG, WITH GUIDES, TYPE PSP, MULTI-BEAM XL SPECIFICATION NO: 114-131EE STATE: CA COUNTY: SAN DIEGO CITY: CARLSBAD ZIP: 92008 CUSTOMER: 00779	Tech Electronics Corporation San Diego, P.O. Box 200230
--	--	--	--