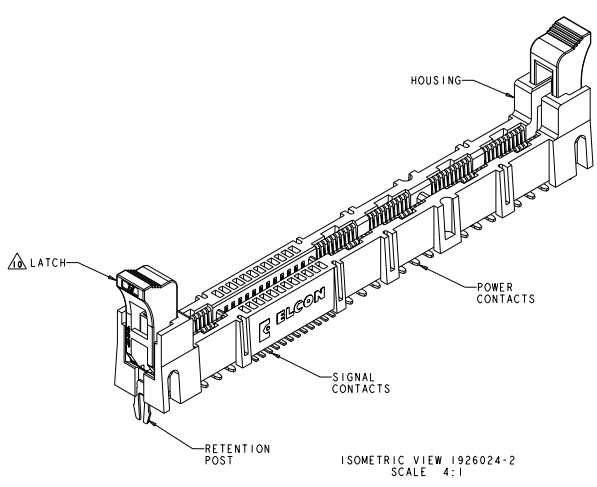


REV. NO.		REV. DATE		REVISIONS	
GP	00				
G		REV PER ECO-08-016292		14.08.2008	RG PD

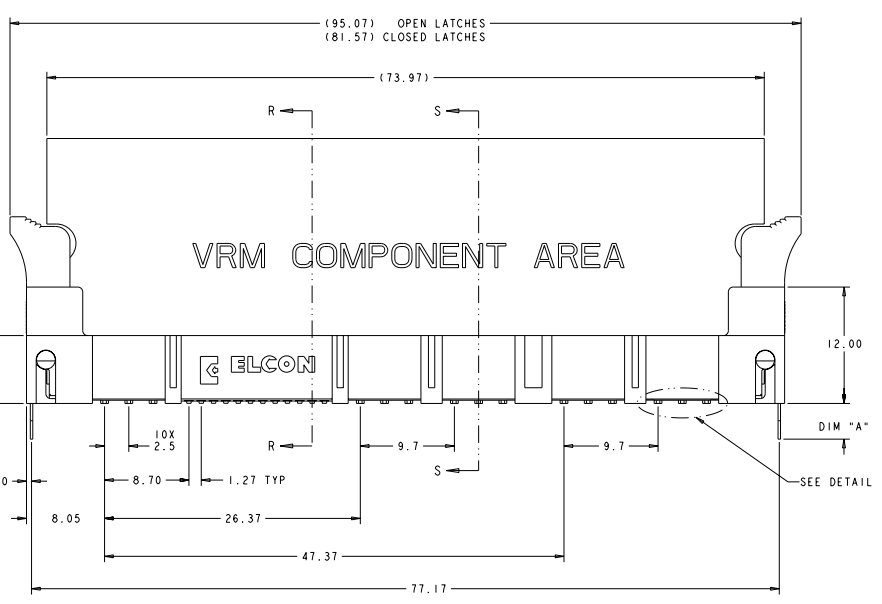
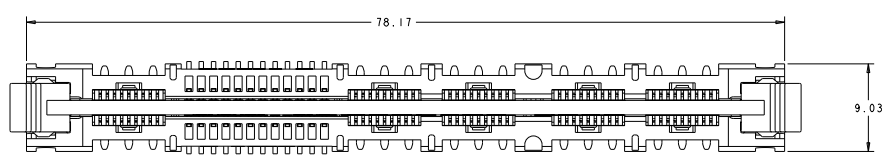


1. PART NUMBER CHANGES AND OR DESIGN CHANGES AFFECTING ITEM INTERCHANGEABILITY REQUIRE PRIOR TYCO ELECTRONICS APPROVAL AND AUTHORIZATION BY REVISION TO THIS DRAWING.
- △ MATERIAL:
HOUSING: GLASS FILLED POLYESTER, COLOR-BLACK
UL94V-0 FLAMMABILITY RATED
LATCHES: THERMOPLASTIC, GLASS REINFORCED
COLOR: BLACK, UL94V-0 FLAMMABILITY RATED
CONTACTS: COPPER ALLOY
RETENTION POST: COPPER ALLOY
- △ FINISH:
SIGNAL CONTACTS:
MATING AREA-0.76µm MIN GOLD OVER 3.81µm MIN NICKEL
0.64µm MIN NICKEL PLATE OVER REMAINDER
SMT TAILS-3.81µm MIN MATTE TIN OVER NICKEL PLATE
POWER CONTACTS:
1.27µm MIN NICKEL PLATE ALL OVER
MATING AREA-0.76µm MIN GOLD OVER NICKEL PLATE
SMT TAILS-3.05µm MIN TIN OVER NICKEL PLATE
RETENTION POSTS:
3.05µm MIN MATTE TIN OVER 0.63µm MIN NICKEL
4. ITEMS PROVIDED TO THIS SPECIFICATION TO BE PERMANENTLY IDENTIFIED WITH PART NUMBER AND DATE CODE.
- △ MAXIMUM BURR OF 0.013 ON CARD TAB AREA.
- △ SET TRACE BACK FROM PC BOARD EDGE. NO SOLDERMASK ALLOWED BETWEEN PC BOARD EDGE AND TRACE.
- △ CONNECTOR ACCEPTS 1.57±0.13 THICK PC BOARD.
- △ KEEP OUT AREA FOR COMPONENTS ONLY.
- △ FEATURE REQUIRED FOR USE WITH EJECTOR.
- △ CAUTION:
LATCHES ARE INTENDED FOR RETENTION OF PC BOARD TO CONNECTOR. DO NOT ATTEMPT TO FULLY EJECT PC BOARD FROM CONNECTOR WHILE DISENGAGING LATCHES, DAMAGE TO LATCHES AND OR CONNECTOR MAY OCCUR.
- △ RECOMMENDED GOLD FINGER LENGTH FOR RELIABLE CONTACT.
- △ DATUMS AND BASIC DIMENSIONS ESTABLISHED BY CUSTOMER.
13. FOR DESIGN OBJECTIVES SEE 108-2301.
14. THIS PRODUCT HAS NOT PASSED QUALIFICATION TESTING.

4.61	1926024-4
4.19	1926024-3
3.68	1926024-2
DIM. "A"	PART NUMBER

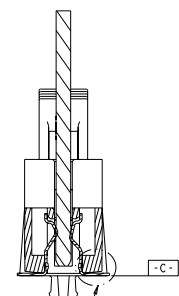
DATE: 14 AUG 07 BY: J.B. JAMALO CHECKED: J.B. JAMALO DATE: 14 JAN 2008 BY: J.B. JAMALO CHECKED: J.B. JAMALO DATE: 14 JAN 2008		Tyco Electronics Harrisburg, PA 17105-3600	
PART NUMBER: 1926024-2 REV: 00		SOCKET CONNECTOR WITH LATCH, SMT P2-S24-P8 MINI CROWN EDGE	
STATE: CA DATE CODE: 1926024		PART NUMBER: 1926024	
CUSTOMER DRAWING		SHEET: 5 OF 4	

REV	DATE	DESCRIPTION	BY	CHK	APP
00		SEE SHEET 1			

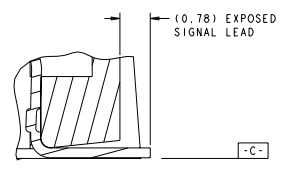


VRM COMPONENT AREA

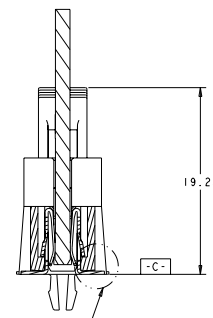
ELCON



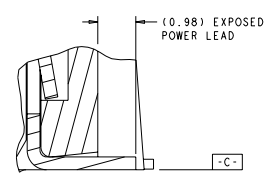
SEE DETAIL H
SECTION R-R



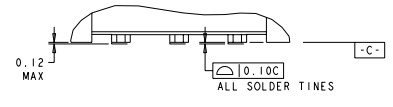
DETAIL H
SCALE 20:1



SEE DETAIL G
SECTION S-S



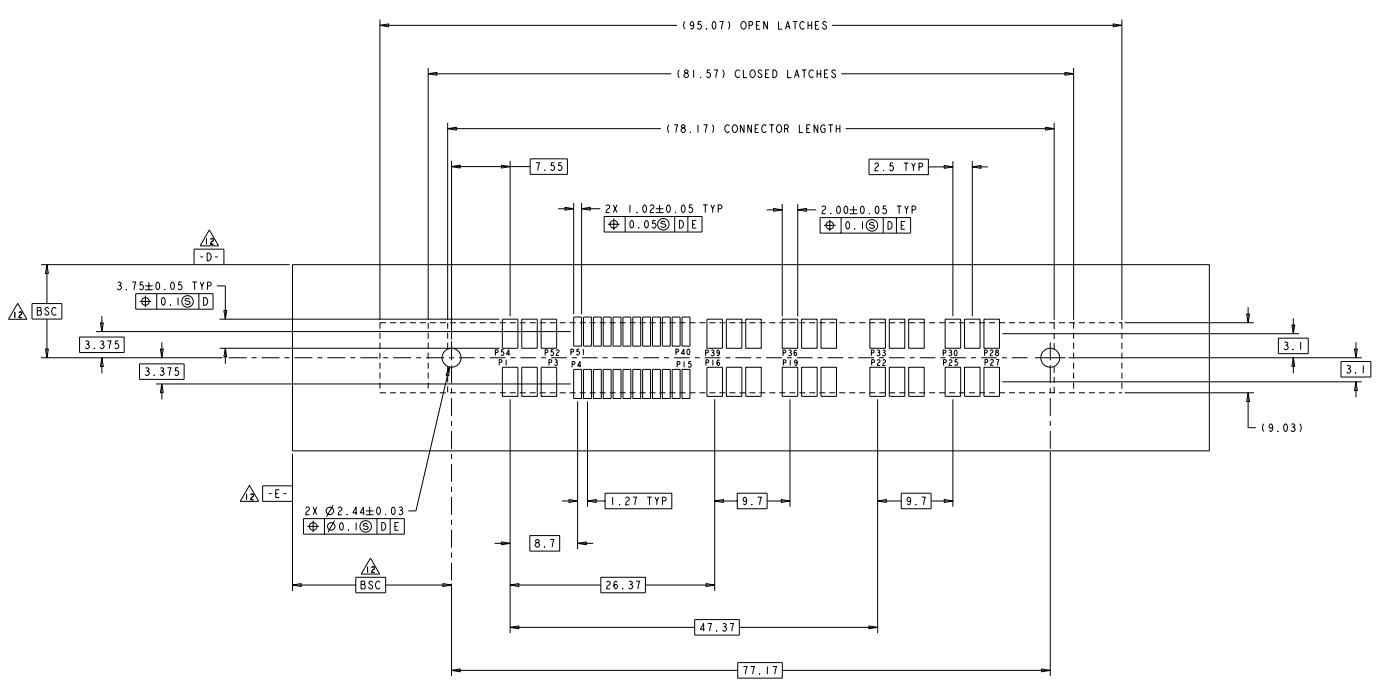
DETAIL G
SCALE 20:1



DETAIL Z
SCALE 12:1

DATE: 29 AUG 07	BY: JESSIE	REV: 01	DATE: 29 AUG 07	BY: JESSIE	REV: 01
TITLE: SOCKET CONNECTOR WITH LATCH, SMT P2-S24-P8 MINI CROWN EDGE			PART: 00779 QTY: 1926024		
CUSTOMER DRAWING			SCALE: 5:1 SHEET: 2 OF 4		

REV		REVISIONS	
NO	DATE	DESCRIPTION	BY
00	00	SEE SHEET 1	



RECOMMENDED SOLDER LAND GUIDELINE
 AS VIEWED FROM CONNECTOR SIDE
 SCALE 4:1

DATE: 19 JAN 2004 BY: JESSIE CHECKED: 29 AUG 07 BY: JAMALD DATE: 19 JAN 2006 BY: JESSIE CHECKED: 19 JAN 2006 BY: JESSIE CHECKED: 19 JAN 2006		Tech Electronics Harrisburg, PA 17105-3600
PART: P2-S24-P8 QTY: 1 UNIT: 1 PRICE: 0.34 DATE: 19 JAN 2006 BY: JESSIE CHECKED: 19 JAN 2006		SOCKET CONNECTOR WITH LATCH, SMT P2-S24-P8 MINI CROWN EDGE
STATE: PA COUNTY: YORK CITY: HARRISBURG ZIP: 17105-3600 PHONE: 717-631-1000 FAX: 717-631-1001 E-MAIL: SALES@TECH-PA.COM WWW: WWW.TECH-PA.COM		STATE: PA COUNTY: YORK CITY: HARRISBURG ZIP: 17105-3600 PHONE: 717-631-1000 FAX: 717-631-1001 E-MAIL: SALES@TECH-PA.COM WWW: WWW.TECH-PA.COM
CUSTOMER DRAWING		SCALE: 4:1 SHEET: 4 OF 4 FILE: G