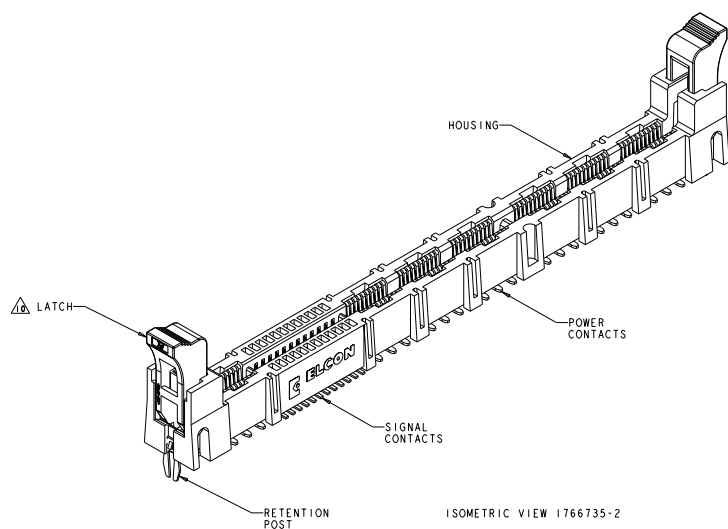


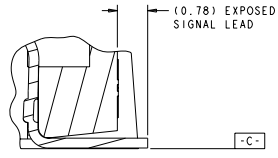
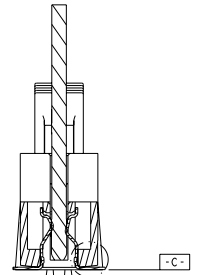
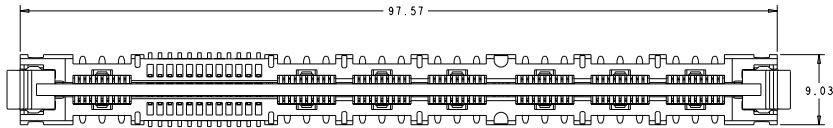
REV. NO.		REV. DATE		REVISIONS	
REV. NO.	REV. DATE	DESCRIPTION	BY	CHKD	APPD
F	REV PER ECO-08-000035				
G	REV PER ECO-08-016287				



- PART NUMBER CHANGES AND OR DESIGN CHANGES AFFECTING ITEM INTERCHANGEABILITY REQUIRE PRIOR TYCO ELECTRONICS APPROVAL AND AUTHORIZATION BY REVISION TO THIS DRAWING.
- △ MATERIAL:
 - HOUSING: GLASS FILLED POLYESTER, COLOR-BLACK
 - UL94V-0 FLAMMABILITY RATED
 - LATCHES: THERMOPLASTIC, GLASS FILLED, COLOR-BLACK
 - UL94V-0 FLAMMABILITY RATED
 - CONTACTS: COPPER ALLOY
 - RETENTION POST: COPPER ALLOY
 - △ FINISH:
 - SIGNAL CONTACTS:
 - MATING AREA-0.76µm MIN GOLD OVER 3.81µm MIN NICKEL
 - 0.64µm MIN NICKEL PLATE OVER REMAINDER
 - SMT TAILS-3.81µm MIN MATTE TIN OVER NICKEL PLATE
 - POWER CONTACTS:
 - 1.27µm MIN NICKEL PLATE ALL OVER
 - MATING AREA-0.76µm MIN GOLD OVER NICKEL PLATE
 - SMT TAILS-3.05µm MIN TIN OVER NICKEL PLATE
 - RETENTION POSTS:
 - 3.05µm MIN MATTE TIN OVER 0.63µm MIN NICKEL
- ITEMS PROVIDED TO THIS SPECIFICATION TO BE PERMANENTLY IDENTIFIED WITH PART NUMBER AND DATE CODE.
 - △ MAXIMUM BURR OF 0.013 ON CARD TAB AREA.
 - △ SET TRACE BACK FROM PC BOARD EDGE. NO SOLDERMASK ALLOWED BETWEEN PC BOARD EDGE AND TRACE.
 - △ CONNECTOR ACCEPTS 1.57±0.13 THICK PC BOARD.
 - △ KEEP OUT AREA FOR COMPONENTS ONLY.
 - △ FEATURE REQUIRED FOR USE WITH EJECTOR.
 - △ CAUTION:
 - LATCHES ARE INTENDED FOR RETENTION OF PC BOARD TO CONNECTOR. DO NOT ATTEMPT TO FULLY EJECT PC BOARD FROM CONNECTOR WHILE DISENGAGING LATCHES. DAMAGE TO LATCHES AND OR CONNECTOR MAY OCCUR.
 - △ RECOMMENDED GOLD FINGER LENGTH FOR RELIABLE CONTACT.
 - △ DATUMS AND BASIC DIMENSIONS ESTABLISHED BY CUSTOMER.
 - FOR DESIGN OBJECTIVES SEE 108-2301.
 - THIS PRODUCT HAS NOT PASSED QUALIFICATION TESTING.

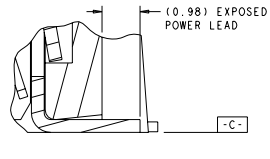
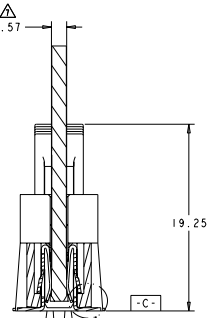
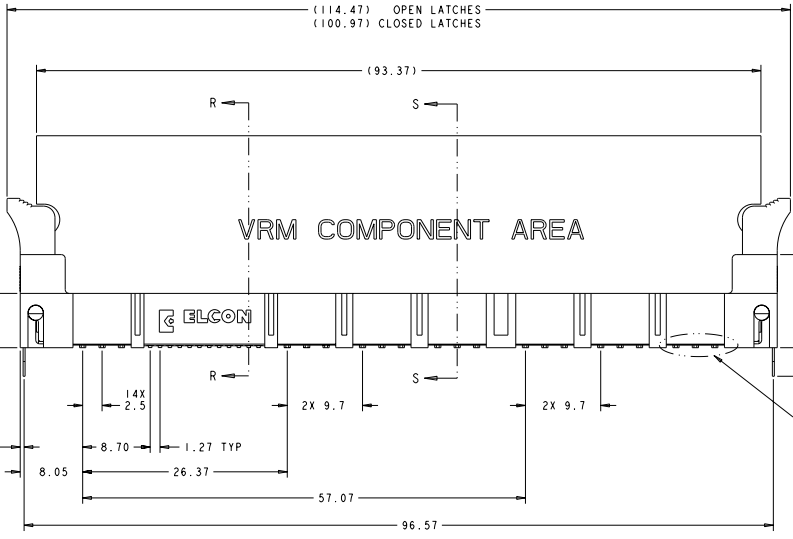
DATE: 06 JUN 2004	BY: J. BEESER	DATE: 06 JUN 2004	BY: J. BEESER	DATE: 06 JUN 2004	BY: J. BEESER
REVISED BY: J. BEESER	DATE: 06 JUN 2004	REVISED BY: J. BEESER	DATE: 06 JUN 2004	REVISED BY: J. BEESER	DATE: 06 JUN 2004
PART NAME: SOCKET CONNECTOR WITH LATCH, SMT P2-S24-P12 MINI CROWN EDGE			PART NUMBER: 1766735		
DRAWING NUMBER: 1766735-2			SCALE: 1:1		
CUSTOMER: CUSTOMER DRAWING			PAGE: 1 OF 1		

REVISORS		DATE	BY	APP
GP	00			



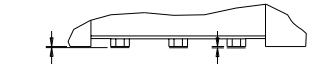
SECTION R-R
SCALE 5:1

DETAIL H
SCALE 20:1



SECTION S-S
SCALE 5:1

DETAIL G
SCALE 20:1



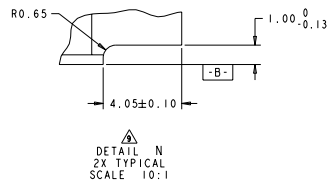
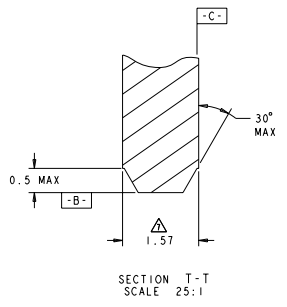
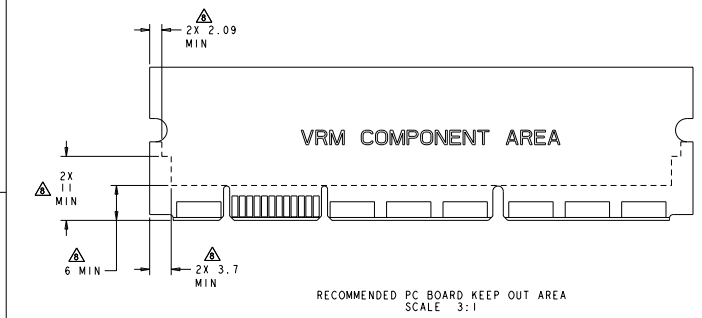
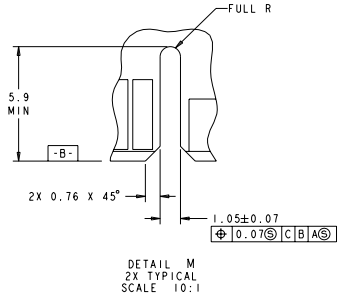
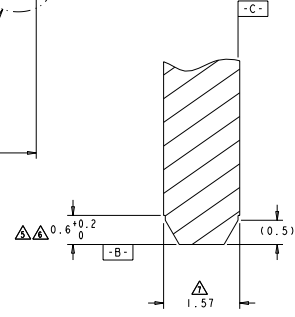
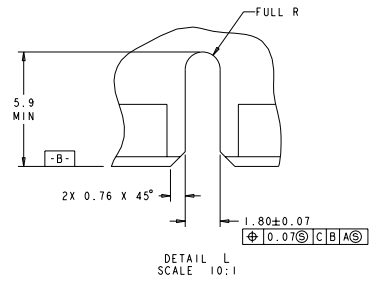
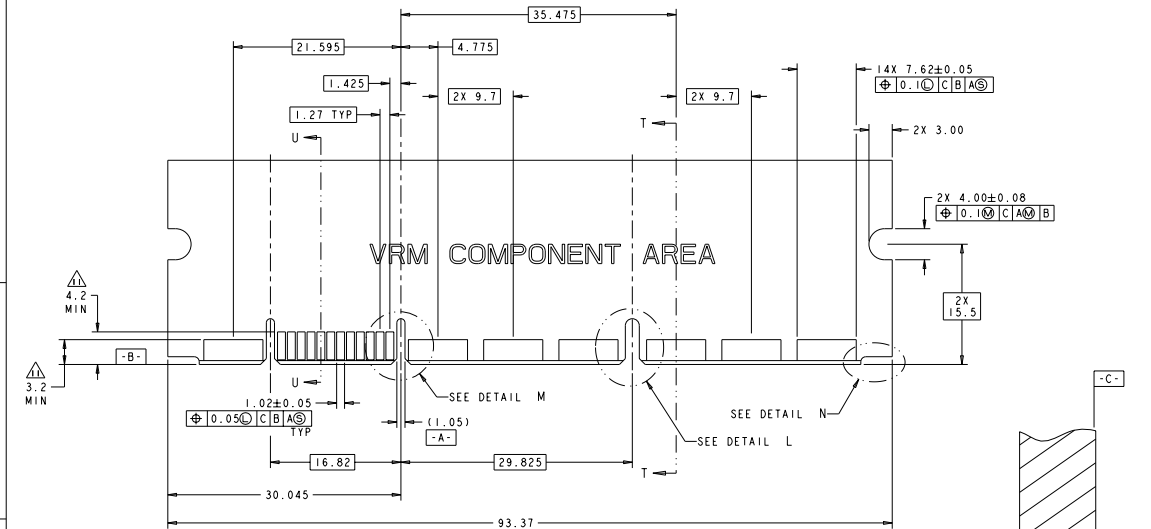
DETAIL Z
SCALE 12:1

4.61	I766735-4
4.19	I766735-3
3.68	I766735-2
DIM "A"	PART NO

DATE: 06/20/2004	BY: J. BEESER	CHKD: J. BEESER	DATE: 06/20/2004	APP: J. BEESER
SOCKET CONNECTOR WITH LATCH, SMT P2-S24-P12 MINI CROWN EDGE				
STATE: PA	CITY: HARRISBURG	ZIP: 17105-3600	CUSTOMER DRAWING	

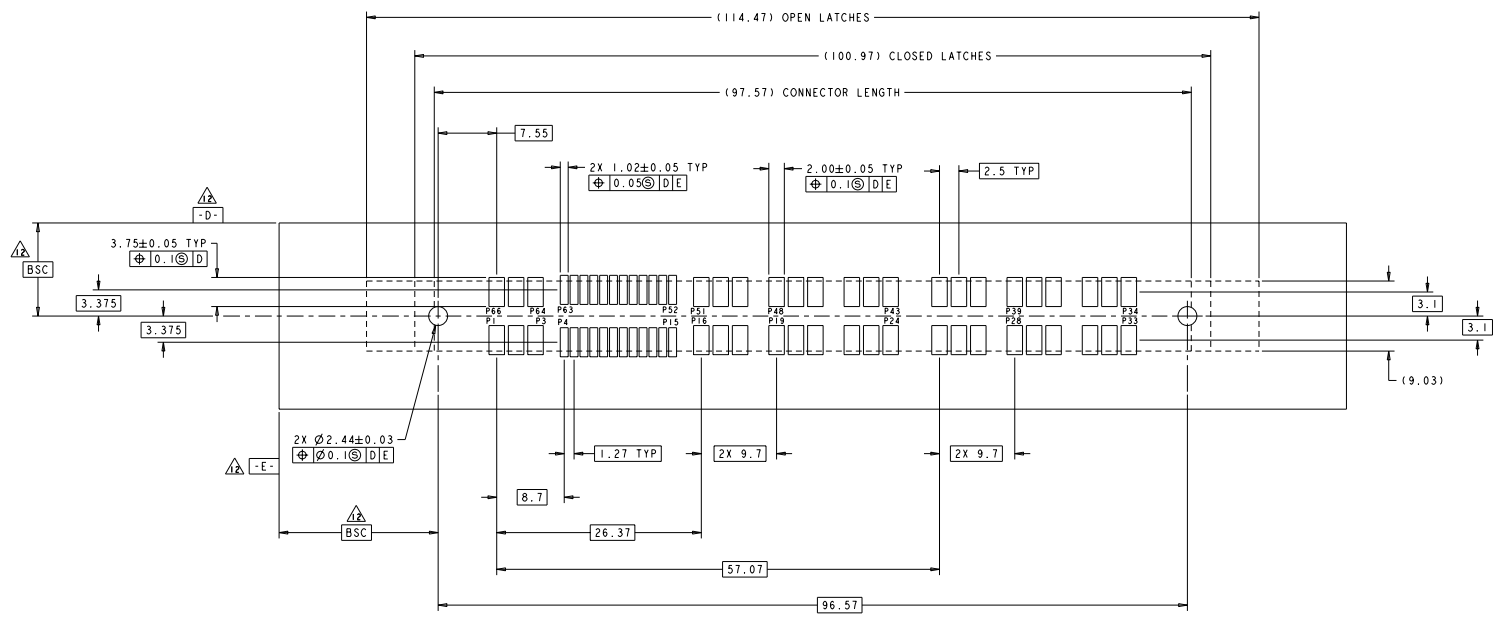
DATE SHOWN IN DIMENSIONS RECEIVED FOR FABRICATION
 BY THIS ELECTRONICS COMPANY. ALL RIGHTS RESERVED

REV	DATE	DESCRIPTION	BY	CHK	APP
00		SEE SHEET 1			



DATE: 06 JUN 2004	BY: J. SCOTT	CHK: J. SCOTT	APP: J. SCOTT	DATE: 06 JUN 2004	BY: J. SCOTT	CHK: J. SCOTT	APP: J. SCOTT
DESIGNED BY: J. SCOTT				DRAWN BY: J. SCOTT			
CHECKED BY: J. SCOTT				APPROVED BY: J. SCOTT			
MATERIAL: 00779				PART NUMBER: 1166735			
CUSTOMER DRAWING				PAGE 4 OF 3			

REV		DESCRIPTION	DATE	BY	CHK
00	GP	SEE SHEET 1			



RECOMMENDED SOLDER LAND GUIDELINE
 AS VIEWED FROM CONNECTOR SIDE

DATE: 06 JUN 2004 TIME: 10:00 AM DRAWN BY: J. BEESER CHECKED BY: J. BEESER DATE: 06 JUN 2004 TIME: 10:00 AM CUSTOMER DRAWING	DATE: 06 JUN 2004 TIME: 10:00 AM DRAWN BY: J. BEESER CHECKED BY: J. BEESER DATE: 06 JUN 2004 TIME: 10:00 AM CUSTOMER DRAWING	Title Electronics Harrisburg, PA 17105-3600 SOCKET CONNECTOR WITH LATCH, SMT P2-S24-P12 MINI CROWN EDGE STATE CASE CODE (SEE DRAWING 40) REVISION: A 00779 1166735 SHEET 1 OF 4
--	--	---