

4

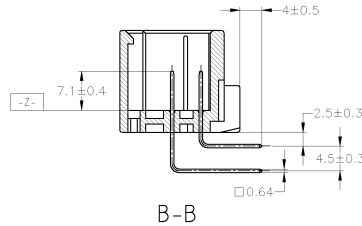
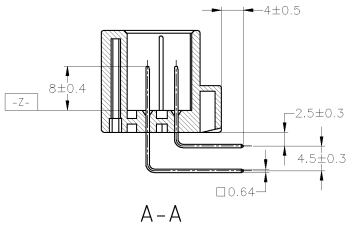
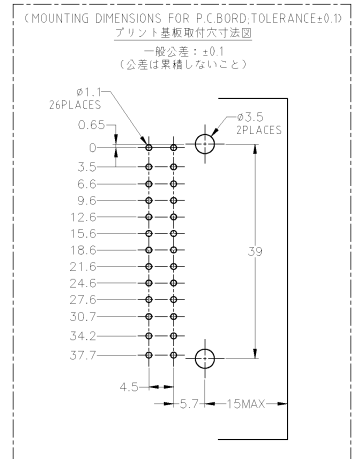
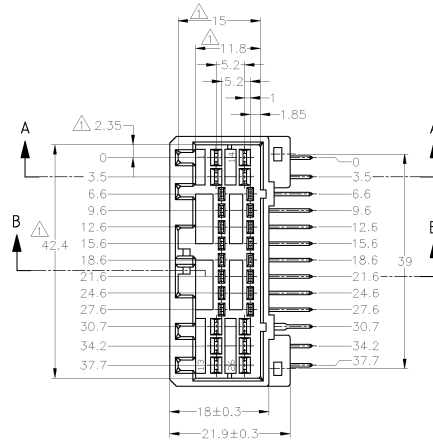
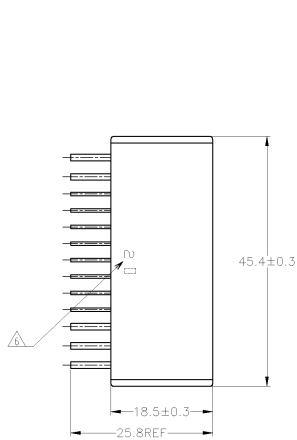
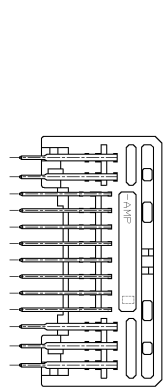
3

2

1

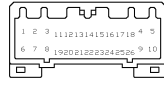
THIS DRAWING IS UNCLASSIFIED
 (C) COPYRIGHT BY ALL RIGHTS RESERVED

REV.	DATE	BY	APP'D	DESCRIPTION
1	01JUN11	TS	KB	REVISIONS
1				REDRAWN W/CHANGE ECR-11-010034



- △ MUST BE KEPT BETWEEN [-Z] AND 2
- 2. THE MATING PLUG HSG PART NUMBER: 174516, 917992
- 3. RECOMMENDED MOUNTING SCREW: 3mm DIA, 6mm LENGTH (MAX)
- PAN HEAD, CLASS 2 TAPPING SCREW SPECIFIED IN JIS B1115, B1122
- 4. TIGHTENING TORQUE: 0.4N-m (4kg-cm) MAX
- △ APPLICABLE PRODUCT SPEC NO.: 108-5280, 108-5342
- △ CIRCUT NUMBER
- POWER CIRCUIT NO. ① ~ ⑩
- SIGNAL CIRCUIT NO. ⑪ ~ ⑳
- △ INDICATED PREFIX AND ID MARK OF PRODUCT P/N BY HOT MARK

- △ [-Z] 面から 2mm の範囲で測定
- 2. 嵌合相手 ハウジング型: 174516, 917992
- 3. 抜き取り寸法: JIS B1115, B1122 タッピング寸法, なべ2種 呼び寸法, 長さ 6mm 以下 (線付けトルク: 0.4N-m (4kg-cm) 以下)
- 4. 適用製品規格番号: 108-5280, 108-5342
- △ 百銘番号: 下部参照のこと
- パワ回路 ① ~ ⑩
- シグナル回路 ⑪ ~ ⑳
- 適用製品番号のアプレックス及び印マークを カラーネットマークにて表示



REV.	DESCRIPTION	DATE	BY	APP'D	COLOR	PART NO.
0	PRE-TINNED 鍍金なし	---	---	---	GRAY 灰色	9-175571-6
1	TIN-LEAD 選択的鍍金 (部分鍍金) x L	---	---	---	GRAY 灰色	4-175571-6
4	PRE-TINNED (真鍮) x 22	---	---	---	GRAY 灰色	4-175571-6
3	TIN-LEAD 選択的鍍金 (部分鍍金) x L	---	---	---	GRAY 灰色	3-175571-6
0	PRE-TINNED (真鍮) x 22	---	---	---	YELLOW 黄色	175571-7
0	PRE-TINNED 鍍金なし	---	---	---	GRAY 灰色	175571-6

THIS DRAWING IS A CONTROLLED DOCUMENT

TE Connectivity

26 POSITION CAP HOUSING ASSEMBLY

040/070 SERIES HYBRID I/O CONNECTOR

00779 175571

SCALE 2:1 SHEET 1 of 1 REV G1