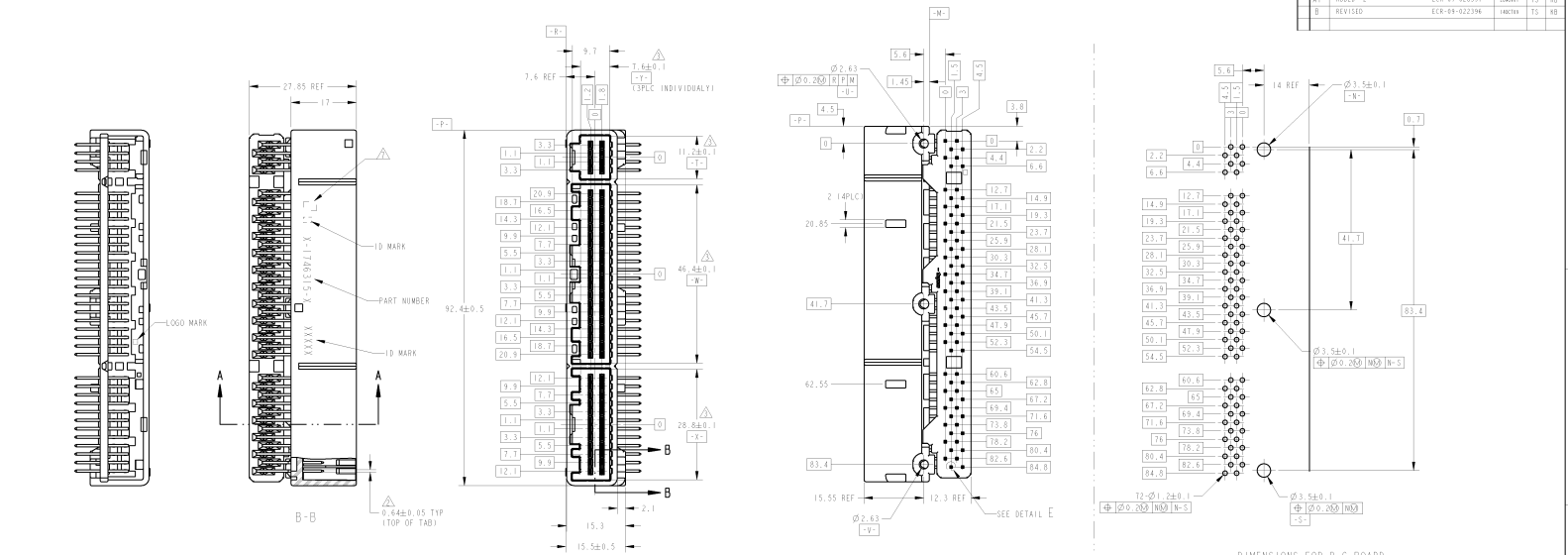


REV. NO.		REV. DATE	REV. CONTENTS	REV. BY	REV. CHECK
1	1	2018.01.10	INITIAL RELEASE	Y. HIRAKAWA	Y. HIRAKAWA
2	A1	2018.01.10	ADD: 2	Y. HIRAKAWA	Y. HIRAKAWA
3	B	2018.01.10	REVISED	Y. HIRAKAWA	Y. HIRAKAWA



DIMENSIONS FOR P.C BOARD
 0.64mm PITCH 2R0W CONNECTOR
 THICKNESS: 1.6mm



FIG. 1000
 CIRCUIT NUMBER

- MATING CONNECTOR PART NO.: SEE TABLE-1
- MARKING POSITION (TOP VIEW)
 TERTIARY DATUM: [2] [W] [1] [1] OF EACH BLOCK.
- MEASURED AT 6mm FROM [2]
- HANDLING THIS PART SHOULD FOLLOW THE INSTRUCTION SHEET NO.411-5932
- APPLICABLE SCREW: PAN-HEAD; TYPE 2 TAPPING-SCREEN, NOMINAL DIAMETER 3mm, LENGTH: SEE TABLE-2
- FASTENING TORQUE (FOR REFERENCE): 0.4N.m REF. BUT THIS IS VALUE FOR COMBINATION OF TAPPING-SCREEN AND PCB FOR TESTING. SO TORQUE FOR OPERATION SHOULD BE PROVIDED RESPECTIVELY.
- APPLICABLE PRINTED CIRCUIT BOARD: SEE TABLE-2 FOR THICKNESS
- MARKING FOR DESCRIPTOR OF THE CONTACT FINISH
- CIRCUIT NUMBER: SEE FIG. 1

- 配線用コネクタ部品番号: TABLE-1 参照
- マーク位置 (上面図)
 三次元的基準: [2] [W] [1] [1] の各ブロック
- [2] から6mm離れた位置で測定
- 取扱いの際は、指示書 No.411-5932を参照
- 適用可能なネジ: パンヘッド; タイプ2タップシールド、公称径3mm、長さ: TABLE-2参照
- 組立トルク (参考値): 0.4N.m 参照。ただし、これはタップシールドとPCBの組み合わせによる試験値であり、実際の作業にはそれぞれに適用されるトルクを指定する。
- 適用可能なプリント基板: TABLE-2を参照
- 接点仕上げの記号
- 回路番号: FIG. 1参照

TABLE-1

POS.	PLUG HOUSING PART NO.
8	1376352
24	1318912
40	1318398
8	1717103
24	1717112
40	1674312

TABLE-2

PLUG HOUSING THICKNESS (mm)	0.5~1.2	1.6~2.0
MINIMUM LENGTH OF SOLDER (mm)	5	6

MARKING POSITION	PACKING STYLE	OUTER DIA.	INNER DIA.	PLASTIC BOX	PLASTIC TUBE	15, 17	SELECTIVE-TIN (MATTE)	SELECTIVE GOLD * 2	NATURAL	PART NUMBER
MARKING POSITION	PACKING STYLE	OUTER DIA.	INNER DIA.	PLASTIC BOX	PLASTIC TUBE	15, 17	SELECTIVE-TIN (MATTE)	SELECTIVE GOLD * 2 (BRIGHT)	NATURAL	1746315-2
MARKING POSITION	PACKING STYLE	OUTER DIA.	INNER DIA.	PLASTIC BOX	PLASTIC TUBE	15, 17	SELECTIVE-TIN (MATTE)	SELECTIVE-TIN * 72 (BRIGHT)	NATURAL	1746315-1

MARKING POSITION	PACKING STYLE	OUTER DIA.	INNER DIA.	PLASTIC BOX	PLASTIC TUBE	15, 17	SELECTIVE-TIN (MATTE)	SELECTIVE GOLD * 2	NATURAL	PART NUMBER
MARKING POSITION	PACKING STYLE	OUTER DIA.	INNER DIA.	PLASTIC BOX	PLASTIC TUBE	15, 17	SELECTIVE-TIN (MATTE)	SELECTIVE GOLD * 2 (BRIGHT)	NATURAL	1746315-2
MARKING POSITION	PACKING STYLE	OUTER DIA.	INNER DIA.	PLASTIC BOX	PLASTIC TUBE	15, 17	SELECTIVE-TIN (MATTE)	SELECTIVE-TIN * 72 (BRIGHT)	NATURAL	1746315-1