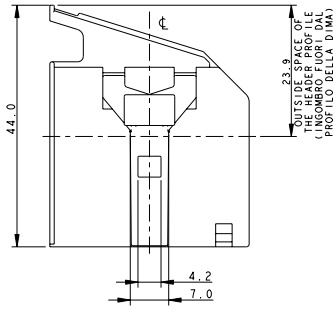
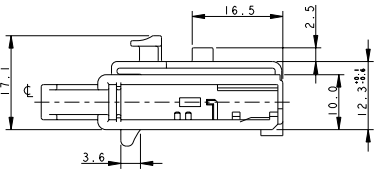
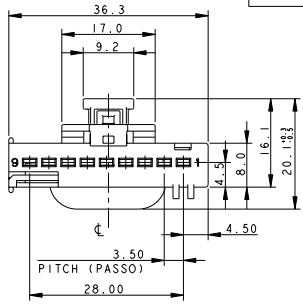
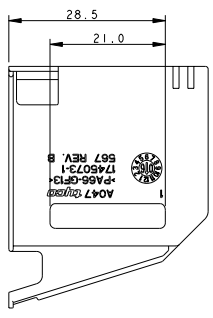
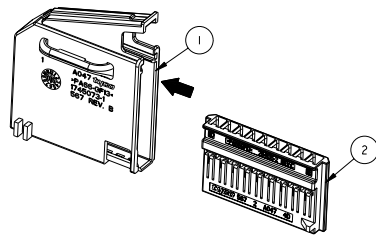


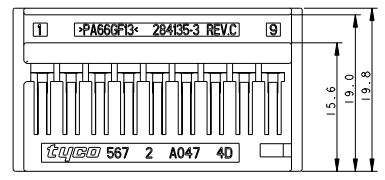
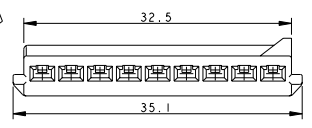
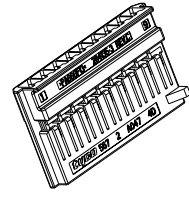
P/N	REV	POLARIZATION KEYS (CHIAVI DI POLARIZZAZIONE)	DRAWING COUNTERPART (DISEGNO CONTROPARTE)
1745074-1	B		00-51033
1745074-2	B		00-51041
1745074-3	B		



LA CORAZZA E IL MODULO PORTA-CONTATTI VENGONO FORNITI IN KIT, NELLA STESSA SCATOLA IN PARI QUANTITA' (FRAME AND HOUSING ARE SUPPLIED IN KIT, IN THE SAME BOX AND QUANTITY)



REV	DESCRIPTION	DATE	APP
0	PRELIMINARY ISSUE (EMISSIONE PRELIMINARE)	06JUL2005	A. B. O. C.
1	UPDATED DRAWING (AGGIORNAMENTO DISEGNO)	08MAR2006	M. P. O. C.
A	UPDATED DRAWING (AGGIORNAMENTO DISEGNO)	19SEP2006	M. P. O. C.
A1	RELEASED FOR PRODUCTION (ECR-06-022829)	27SEP2006	M. P. O. C.
B	ECR-10-006842	19MAY2010	M. P. M. G.



NR. 9 CAVITA' ADATTE PER CONTATTI:
 P/N 284087-1 SEZ. CAVI 0.35-0.5 mm2
 P/N 284088-1 SEZ. CAVI 0.75-1.5 mm2
 NR. 9 CAVITA' SUITABILI PER CONTATTI:
 P/N 284087-1 SEZ. CAVI 0.35-0.5 mm2
 P/N 284088-1 SEZ. CAVI 0.75-1.5 mm2

ITEM	DESCRIPTION (DESCRIZIONE)	MATERIAL (MATERIALE)	COLOUR (COLORE)	Q.TY (Q. TA')
1	9 POS. FRAME PITCH 3.5 (CORAZZA 9 VIE PASSO 3.5)	PA66 G.F.	BLACK (NERO)	1
2	9 POS. PLUG HOUSING (19 POS. PORTA FEMMINE)	PA66 G.F.	GREY (GRIGIO)	1

P/N 1745074-1 /-2 /-3 AS SHOWN (COME MOSTRATO)

DIMENSIONI: mm 1 PLG FORC: 80.3 2 PLG FORC: 80.3 3 PLG FORC: 80.3 4 PLG FORC: 80.3 ANGOLI (ANGOLI) 82	TOGLIANGHI SPECIFICATO SPEC DI PRODOTTO APPLICATION SPEC SPEC DI APPLICAZIONE	DATA: 06 JUL 2005 A. BRICCARIELLO 08 JUL 2005 O. CANILIO 08 JUL 2005 A. GENIA 08 JUL 2005 SPECIFICAZIONE SPEC DI PRODOTTO APPLICATION SPEC SPEC DI APPLICAZIONE	Tyco Electronics Tyco Electronics Italia S.r.l. C.so F.lli Cervi, 15 Colleugo (TO)
MATERIALI VEDI TABELLA (SEE TABLE)	VEDI TABELLA (SEE TABLE)	CUSTOMER DRAWING DISEGNO PER CLIENTE SOLO PER RIVENDITORE	9 POS REC CONNECTOR FOR 070 NEW GEN. CRIMP - KIT (CONNETTORE PORTA FEMMINE PER 070 NEW GEN. CRIMP-KIT) SIZE / CODE / DRAWING NO / NUMBER A200779 / 1745074 RESTRICTED TO SCALE 1:1 SHEET / OF 11 REV B