

4

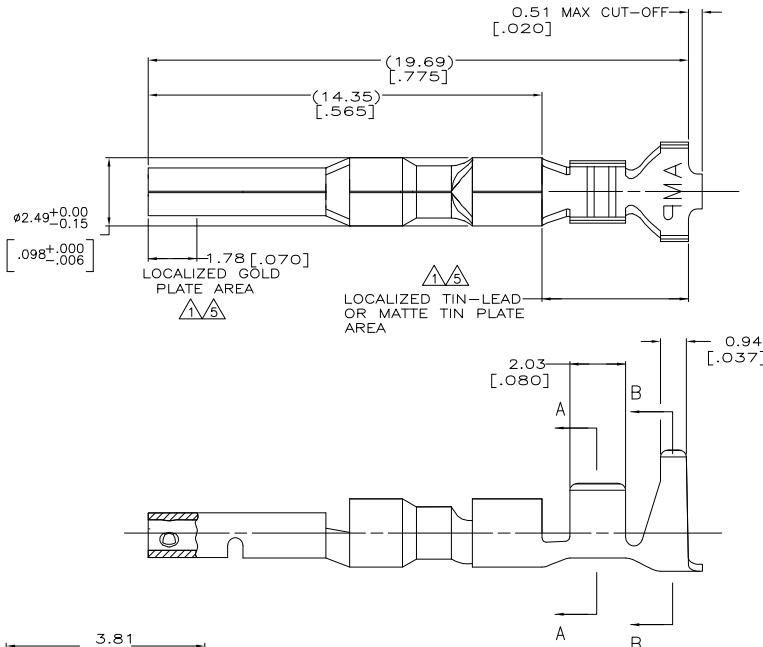
3

2

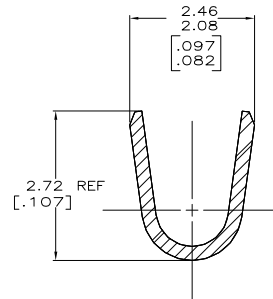
1

THIS DRAWING IS UNPUBLISHED. RELEASED FOR PUBLICATION
 © COPYRIGHT BY TYCO ELECTRONICS CORPORATION. ALL RIGHTS RESERVED.

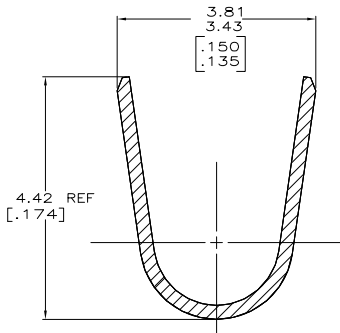
| LOC | DIST | REVISIONS | | | | | |
|-----|------|-----------|-----|--------------------------|---------|-----|-----|
| CM | 0 | P | LTR | DESCRIPTION | DATE | MIN | APD |
| | | F | | REVISED PER 0638-0237-05 | 9/21/05 | SS | CJ |



- 1. 0.00076 [.000030] MIN GOLD IN LOCALIZED GOLD PLATE AREA AND 0.00254 [.000100] MIN BRIGHT TIN-LEAD IN LOCALIZED TIN-LEAD PLATE AREA OVER 0.0013 [.000050] MIN NICKEL.
- 2. WIRE RANGE: 0.3 - 0.9MM² (22-18 AWG).
- 3. INSULATION RANGE: 1.50-2.79 [.059-.110] DIA.
- 4. DIMENSIONS IN BRACKETS ARE IN INCHES.
- 5. 0.00076 [.000030] MIN GOLD IN LOCALIZED GOLD PLATE AREA AND 0.00254 [.000100] MIN MATTE TIN IN LOCALIZED TIN PLATE AREA OVER 0.0013 [.000050] MIN NICKEL.



SECTION A-A
SCALE 20:1



SECTION B-B
SCALE 20:1

| | | |
|---------|-------------------|-------------|
| | 0.25 [.010] BRASS | 1-794229-0 |
| | 0.25 [.010] BRASS | 794229-3 |
| PRE-TIN | 0.25 [.010] BRASS | 794229-1 |
| FINISH | MATERIAL | PART NUMBER |

| | | | |
|--|---|--|---|
| THIS DRAWING IS A CONTROLLED DOCUMENT. | | DWG: R_VESTAL 1-15-97 CHK: R_SWING 1-15-97 APPD: - PRODUCT SPEC: - APPLICATION SPEC: - WEIGHT: - FINISH: - | Tyco Electronics Tyco Electronics Corporation Harrisburg, PA 17105-3608 SOCKET, LOOSE PIECE, MINI UNIVERSAL MATE-N-LOK 2 SIZE: A2 CAGE CODE: 00779 DRAWING NO: 794229 RESTRICTED TO: - CUSTOMER DRAWING |
| DIMENSIONS: mm [INCHES] | TO DIMENSIONS UNLESS OTHERWISE SPECIFIED: | | |
| 0. PLC ± | 1. PLC ± | | |
| 2. PLC ± | 3. PLC ± | | |
| 4. PLC ± | 5. PLC ± | | |
| MATERIAL: SEE TABLE | FINISH: SEE TABLE | SCALE: 10:1 | SHEET: 1 of 1 REV: F |

AMP 1471-9 REV 31MAR2000

794229

A