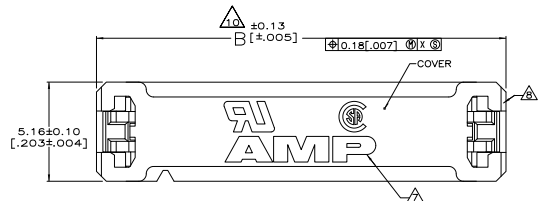
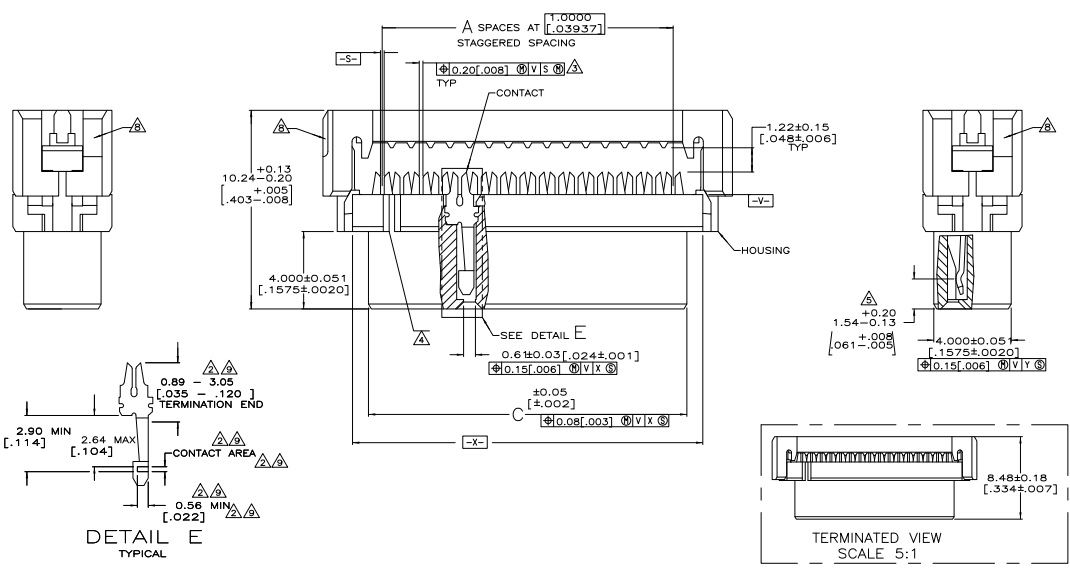


THIS DRAWING IS UNAPPROVED
 ALL RIGHTS RESERVED

REV	DATE	DESCRIPTION	BY	CHK	APP
00					
01		REVISED PER EDD-11-000033			



- ▲ MOLDED PARTS: POLYESTER, UL RATED 94V-0, BLACK. CONTACTS: BERYLLIUM COPPER.
- ▲ 2.54µm [0.000100] MIN TIN-LEAD ON TERMINATION END, 0.76µm [0.000030] MIN GOLD ON CONTACT AREA, ALL OVER 1.27µm [0.000050] MIN NICKEL.
- ▲ POSITION TOLERANCE APPLIES 0.76 [0.030] ABOVE DATUM V.
- ▲ POSITION NUMBER 1 INDICATOR.
- ▲ ELECTRICAL ENGAGEMENT ZONE.
- 6. RECOMMENDED 28 AWG RIBBON CABLE, 0.61 - 0.97 [0.24 - 0.38] THICK PVC, 1.000[0.03937] PITCH.
- ▲ AMP LOGO ORIENTATION IS OPTIONAL.
- ▲ RECESS ON EACH END, OPPOSITE CORNER.
- ▲ 0.13µm [0.000005] MIN GOLD ON TERMINATION END, 0.76µm [0.000030] MIN GOLD ON CONTACT AREA, ALL OVER 1.27µm [0.000050] MIN NICKEL.
- ▲ MOLD GATE PROJECTION ON EITHER END OF COVER TO BE EXCLUDED FROM DIMENSION 'B' MEASUREMENT.



0.0000	26.42	31.17	25	26	2-111626-7
0.0000	1.040	1.227			
1.0000	24.41	29.18	23	24	2-111626-6
0.03937	1.9611	1.149			
1.0000	16.41	21.18	15	16	2-111626-5
0.03937	1.646	1.834			
1.0000	8.41	13.18	7	8	2-111626-4
0.0000	50.39	55.17	49	50	2-111626-3
0.0000	1.984	2.172			
1.0000	44.40	49.17	43	44	2-111626-2
0.03937	1.748	1.936			
1.0000	40.41	45.19	39	40	2-111626-1
0.03937	1.591	1.779			
0.0000	34.42	39.17	33	34	2-111626-0
0.0000	1.355	1.542			
1.0000	20.40	25.17	19	20	1-111626-9
0.03937	1.803	1.991			
0.0000	14.40	19.18	13	14	1-111626-8
0.0000	1.567	1.755			
0.0000	10.41	15.16	9	10	1-111626-7
0.0000	1.410	1.597			
1.0000	8.41	13.18	7	8	1-111626-6
0.03937	1.331	1.519			
0.0000	22.40	27.18	21	22	1-111626-5
0.0000	1.882	1.070			
1.0000	68.40	73.18	67	68	1-111626-4
0.03937	2.693	2.881			
1.0000	64.41	69.16	63	64	1-111626-3
0.03937	2.536	2.723			
1.0000	60.40	65.18	59	60	1-111626-2
0.03937	2.378	2.566			
0.0000	50.39	55.17	49	50	1-111626-1
0.0000	1.984	2.172			
1.0000	44.40	49.17	43	44	1-111626-0
0.03937	1.748	1.936			
1.0000	40.41	45.19	39	40	111626-9
0.0000	34.42	39.17	33	34	111626-8
0.0000	1.355	1.542			
0.0000	30.40	35.18	29	30	111626-7
0.0000	1.197	1.385			
0.0000	26.42	31.17	25	26	111626-6
0.0000	1.040	1.227			
1.0000	24.41	29.18	23	24	111626-5
0.03937	1.9611	1.149			
1.0000	16.41	21.18	15	16	111626-4
0.03937	1.646	1.834			
0.0000	14.40	19.18	13	14	111626-3
0.0000	1.567	1.755			
0.0000	10.41	15.16	9	10	111626-2
0.0000	1.410	1.597			

CONTACT FINISH	D	C	B	A	NO OF POSN	PART NO

THIS DRAWING IS A CONTROLLED DOCUMENT. DATE: 02-21-02

TE Connectivity

RECEPTACLE ASSY, 2mm CL, AMP-LATCH

SIZE: 10-1 1 1 MZ