

4

3

2

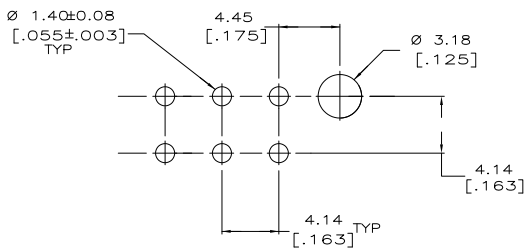
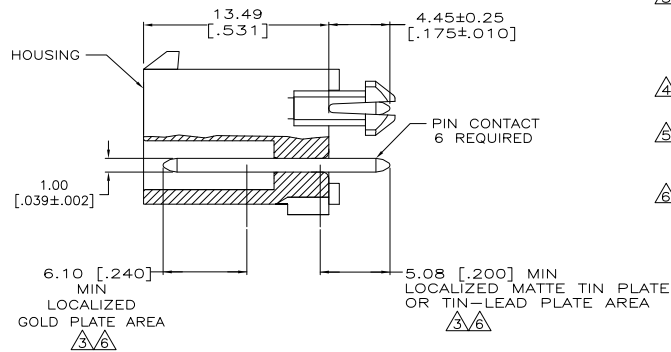
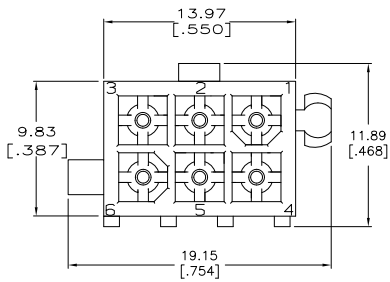
1

THIS DRAWING IS UNPUBLISHED. RELEASED FOR PUBLICATION. ALL RIGHTS RESERVED.

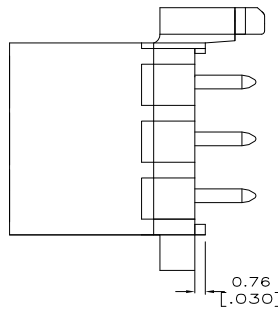
LOC	DIST	REVISIONS					
CM	0	F	LR	DESCRIPTION	DATE	BY	APPD
		F1		REVISED PER ECO-11-004820	11MAR11	RK	HMR

- PINS TO COMPLY WITH AMP SOLDERABILITY SPEC. 109-11-3.
- DIMENSIONS SHOWN IN BRACKETS ARE IN INCHES.

- △ 0.00076 [.000030] MIN GOLD PLATE IN THE LOCALIZED GOLD PLATE AREA, 0.00381 [.000150] MATTE TIN LEAD IN THE LOCALIZED TIN LEAD PLATE AREA, BOTH OVER 0.00127 [.000050] MIN NICKEL.
- △ 0.00381 [.000150] MATTE TIN LEAD OVER LENGTH OF PIN.
- △ 0.00381 [.000150] MATTE TIN OVER 0.00127 [.000050] MIN NICKEL ENTIRE LENGTH OF PIN.
- △ 0.00076 [.000030] MIN GOLD PLATE IN THE LOCALIZED GOLD PLATE AREA, 0.00381 [.000150] MATTE TIN IN THE LOCALIZED TIN PLATE AREA, BOTH OVER 0.00127 [.000050] MIN NICKEL.



RECOMMENDED LAYOUT FOR 1.57 [.062] THICK BOARD TOLERANCES NON-ACCUMULATIVE



MATERIAL	FINISH	MATERIAL	COLOR	PART NO.
BRASS	△ 6	NYLON, UL94V-0	WHITE	1-770875-1
BRASS	△ 5	NYLON, UL94V-0	WHITE	1-770875-0
BRASS	△ 3	NYLON, UL94V-0	WHITE	770875-2
BRASS	△ 4	NYLON, UL94V-0	WHITE	770875-1

THIS DRAWING IS A CONTROLLED DOCUMENT.		DRN S CARPENTER	08/JUN/05	TE Connectivity	
DIMENSIONS: mm		CHK R JONES	29/JUL/2003	TE Connectivity	
TOLERANCES UNLESS OTHERWISE SPECIFIED:		APPD R JONES	29/JUL/2003	NAME	
0 PLG	± .01	PRODUCT SPEC		HEADER ASSEMBLY	
1 PLG	± .01	APPLICATION SPEC		CLOSED BOTTOM, 6 CKT,	
2 PLG	± .015	WEIGHT		MINI UNIVERSAL MATE-N-LOK	
3 PLG	± .01	FINISH		RESTRICTED TO	
4 PLG	± .01	CUSTOMER DRAWING		SIZE	A2
ANGLES	± .01	SCALE		CASE CODE	00779
		SHEET		DRAWING NO	770875
		1 of 1		REV	F1