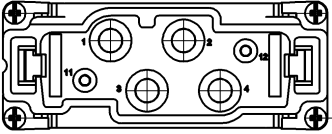


THIS DRAWING IS UNPUBLISHED VERTRAULICHE UNVERÖFFENTLICHE ZEICHNUNG		RELEASE FOR PUBLIKATION FREI FÜR VERÖFFENTLICHUNG		MATED WITH: PASSEND ZU:		LOC	DIST	REVISIONS ÄNDERUNGEN					
COPYRIGHT 2000		BY AMP INCORPORATED		1102076		AI	-	F	LTR	DESCRIPTION BESCHREIBUNG	DATE	DWN	APVD
								D1		NEW CSL LOGO ADDED	11.08.2008	SR	ST

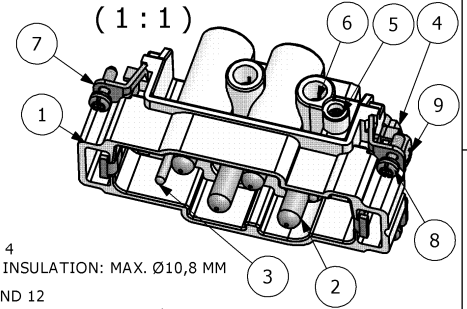
**CONTACT ARRANGEMENT
VIEW FROM CONNECTING SIDE**



A (2:1)

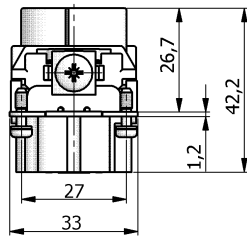
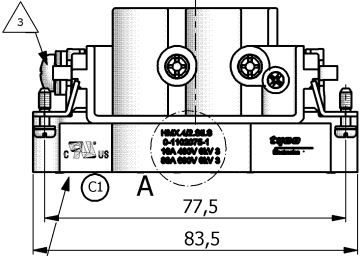
**HMX.4/2.STI.S
0-1102075-1
16A 400V 6KV 3
80A 690V 6KV 3**

0-1 AS SHOWN
ORDERING TEXT: HMX.4/2.STI.S

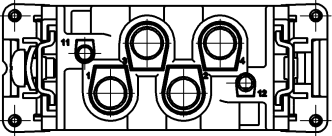


NOTES

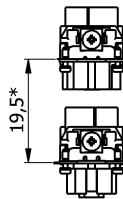
- 1 POWER CONTACT: 1 TO 4
OUTER DIMENSIONS OF INSULATION: MAX. Ø10,8 MM
- 2 SIGNAL CONTACT: 11 AND 12
OUTER DIMENSIONS OF INSULATION: MAX. Ø4,8 MM
- △ 3 GROUNDING CONTACT
- 4 SUITABLE HOOD SIZE 6: SERIES HB; HD; EMV AND HIP
- 5 STANDARDS:
DIN EN 61984; DIN EN 60664-1
- △ 6 UL; CSA AUTHORIZATION
- 7 PACKAGING:
5 PIECES IN A CARTON



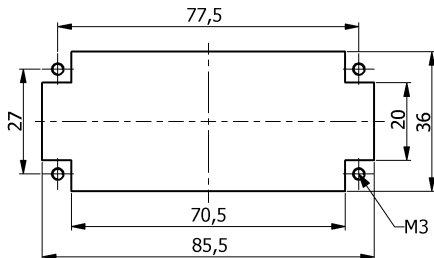
**CONTACT ARRANGEMENT
VIEW FROM TERMINATION SIDE**



* DISTANCE FOR GUARANTEED
CONTACT MAX. 21 mm



**PANET CUT-OUT CONTACT INSERT
WHEN USED WITHOUT HOUSING**



QTY.	DESCRIPTION	MATERIAL	SURFACE	COLOR	NOTE	ITEM
1	SCREW	STEEL	NICKEL PLATED	BLUE	DIN EN ISO 1207-M5X8	9
4	FIXING SCREW	STEEL	NICKEL PLATED	BLUE	M3X10,5	8
2	PIN GROUNDING CONTACT	BRASS	NICKEL PLATED	BLUE	-	7
4	THREAD PIN	STEEL	NICKEL PLATED	BLUE	-	6
2	CONTACT SCREW	STEEL	NICKEL PLATED	BLUE	M3X5,7	5
1	CLAMP TAB	STEEL	NICKEL PLATED	BLUE	---	4
2	CONTACT PIN	BRASS	SILVER PLATED	BLUE	-	3
4	PIN CONTACT	BRASS	SILVER PLATED	BLUE	-	2
1	MALE INSERT	PBT-GF30	-	LIGHT GREY	-	1

PARTS LIST

THIS DRAWING IS A CONTROLLED DOCUMENT FOR AMP INCORPORATED. IT IS SUBJECT TO CHANGE AND THE CONTROLLING ENGINEER'S ORGANIZATION SHOULD BE CONTACTED FOR THE LATEST REVISION. ÄNDERUNGEN SIND FÜR DIESE ZEICHNUNG GÜLTIG. FÜR WECHSELNDE ANGEBOTE SIND DIE NEUESTEN ANGABEN MIT EINER VERÄNDERUNG DEN JEWEILIGEN LETZTLIEGENDE ÄNDERUNGSSTAND ERFAHREN SIE AUF AMRAGE.		DWN	12.07.2005	Tyco / Electronics AMP GmbH D - 53819 Neunkirchen	
SCHNEIDER		CHK	12.07.2005	T. SCHNURPFEL	
DIMENSIONS: DIMENSIONEN: mm		NAME		MALE INSERT HMX.4/2.STI.S	
TOLERANCES UNLESS OTHERWISE SPECIFIED: ALLGEMEINTOLERANZEN		PRODUCT SPEC. PRODUKTSPEZ.		108-74058	
h. ISO 9015 - mm-H p. ISO 2768 - mm-E d. DIN 90001 - 140		APPLICATION SPEC. VERARBEITUNGSPEZ.		114-74058	
MATERIAL		FINISH / OBERFLÄCHE / FARBE	WEIGHT GEWICHT	0,122 KG	A3
0 P/LC 1 P/LC 2 P/LC 3 P/LC		JANGLES / WINKEL		1102075	
CUSTOMER DRAWING / KUNDENZEICHNUNG		SCALE MASSSTAB	1:1	SHEET BLATT	1 OF VON 1
		REV.		D1	