

4

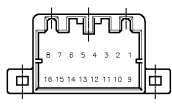
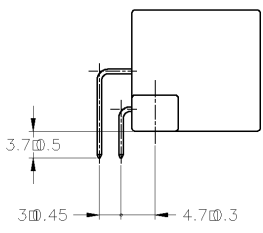
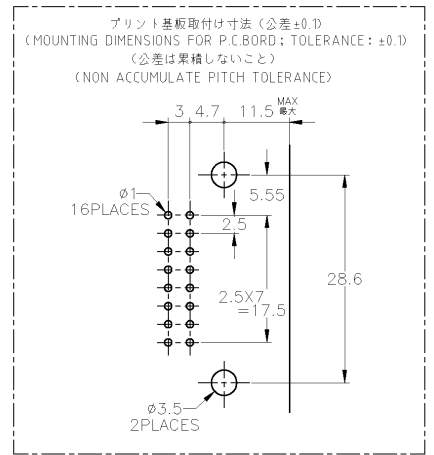
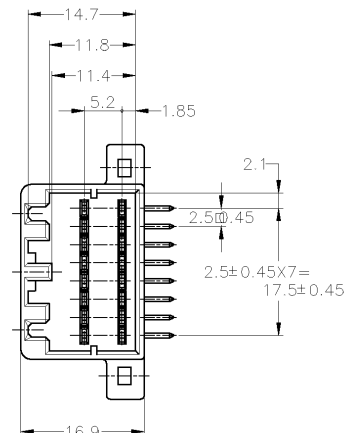
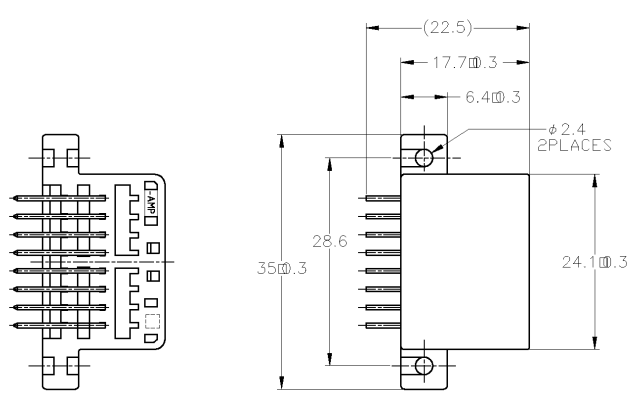
3

2

1

THIS DRAWING IS UNPUBLISHED. RELEASED FOR PUBLICATION
 COPYRIGHT © BY TYCO ELECTRONICS CORPORATION. ALL RIGHTS RESERVED.

LOC	DIST	REVISIONS					
J	-	P	LTR	DESCRIPTION	DATE	DWN	APVD
		K		OBSOLETE 4--2, 9--1	ECR-09-000161	07JAN09	TS KB



SELECTIVE-TIN (MATTE)	SELECTIVE TIN (BRIGHT) × 14 SELECTIVE GOLD × 2	3, 4	BLACK	2-175615-2
OBSOLETE	SELECTIVE-TIN PRE-TIN	-	BLACK	9-175615-2
OBSOLETE	SELECTIVE-TIN PRE-TIN	-	NATURAL	9-175615-1
OBSOLETE	SELECTIVE-TIN × 14 TIN-LEAD SELECTIVE GOLD × 2	8, 16	BLACK	4-175615-2
	PRE-TIN × 14	8, 16	BLACK	3-175615-2
	TIN-LEAD SELECTIVE GOLD × 2	3, 4	BLACK	2-175615-2
	PRE-TIN × 14	-	BLACK	175615-3
	SELECTIVE-TIN (MATTE) SELECTIVE-TIN (BRIGHT)	-	BLACK	175615-2
	PRE-TIN	-	BLACK	175615-2
	PRE-TIN	-	WHITE	175615-1
SOLDERING SIDE 半田付け部	CONTACT SIDE 接触部側	GOLD PLATED (CIRCUIT NO) 金めっき回路番号	COLOR 色	PART NUMBER 製品型番

- THE MATING PLUG HSG. PART NUMBER ; 174909, 175966
 - RECOMMENDED MOUNTING SCREW 3mm DIA
6mm LENGTH (MAX) PAN HEAD, CLASS
2 TAPPING SCREW SPECIFIED IN JIS
B1115, B1122 (TIGHTENING TORQUE ; 39.2N-cm MAX)
- △ 回路番号 (SEE ABOVE)
- 嵌合相手ハウジング ; 174909, 175966
 - 推奨取付ネジ ; JIS B1115, B1122 タッピングネジ, M3X6
ナベ2種 (締付トルク ; 39.2N-cm 以下)
- △ 回路番号 ; 上図参照のこと

THIS DRAWING IS A CONTROLLED DOCUMENT.

DIMENSIONS: 単位: 概 mm

TOLEANCES UNLESS OTHERWISE SPECIFIED: 一般公差

0 PLC	±	-
1 PLC	±	-
2 PLC	±	-
3 PLC	±	-
4 PLC	±	-
ANGLES	±	-

MATERIAL: PBT - HOUSING, BRASS - TAB

FINISH: 仕上

COLOR: SEE TABLE

DWN: M. KADOSAKI 130CT05
CHK: T. SHINOHARA 130CT05
APVD: K. BETSUI 130CT05

NAME: 名称

PRODUCT SPEC: 製品規格

APPLICATION SPEC: 取付適用規格

WEIGHT:

CUSTOMER: DRAWING

Tyco Electronics Tyco Electronics Corporation Kawasaki, Japan

16POS CAP HOUSING ASSY
040 SERIES MULTI-LOCK I/O CONNECTOR MK-II

SIZE: A3 CAGE CODE: 00779 DRAWING NO: 175615 RESTRICTED TO: -

SCALE: 2:1 SHEET: 1 OF 1 REV: K