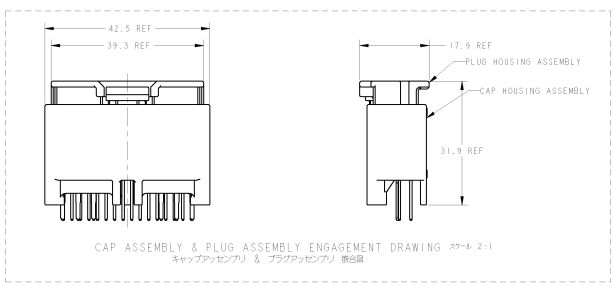
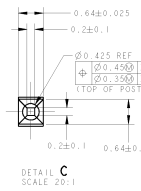
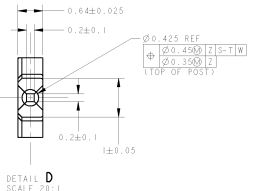
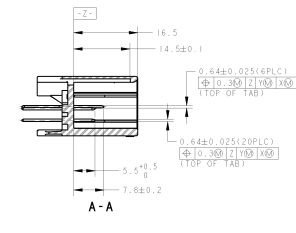
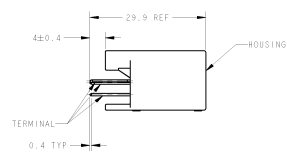
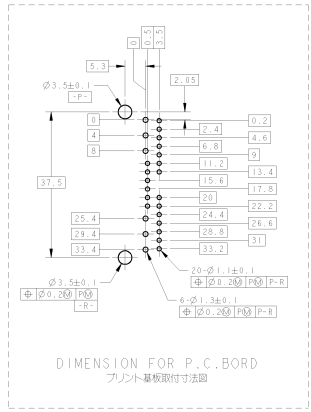
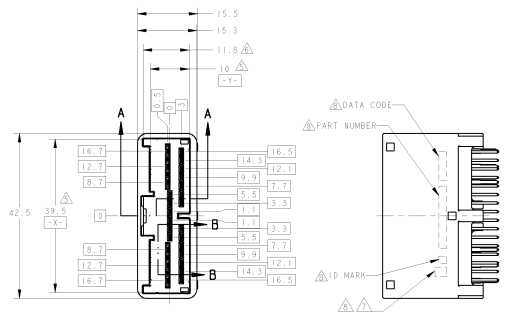
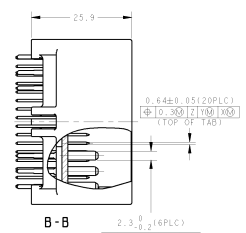
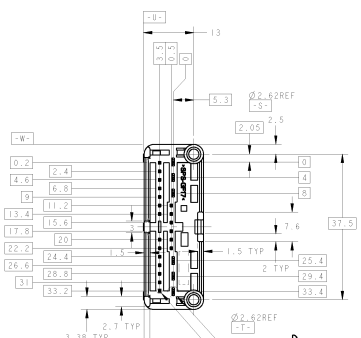


REV.	DATE	DESCRIPTION	DATE	BY	CHK
1					
2					
3					
4					
5					
6					
7					
8					



1. MATING CONNECTOR PART NUMBER: SEE TABLE-1. TO BE MATED SMOOTHLY WITH THE PLUG HOUSING ASSEMBLY.
 2. RECOMMENDED SCREW - PAN-HEADED. REFER TO JIS B1115, B1122. NOMINAL DIAMETER 3mm. LENGTH: SEE TABLE-2.
 3. FASTENING TORQUE (FOR REFERENCE): 0.392N·m MAX. BIT TORQUE FOR OPERATION SHOULD BE PROVIDED RESPECTIVELY.
 4. INSTRUCTION SHEET NO: 411-5927
- △ MEASURED AT 5mm FROM [2-]
 △ MEASURED AT 2mm FROM [2-]
 △ IDENTIFICATION MARK FOR THE CONTACT FINISH: SEE TABLE.
 △ -, -4 ONLY.

TABLE-1

POS. 番号	PLUG HOUSING PART NO.
26	1376360 1614932

TABLE-2

プラグ基板厚さ (mm)	THICKNESS OF PCB (mm)	1.2	1.4
0.2	5	5	6

1	PLASTIC BOX プラスチックボックス	PLASTIC TUBE プラスチックチューブ	SELECTIVE TIN (MATE)	SELECTIVE TIN (BRIGHT)	0.2	SPS	NATURAL	1565371-4
1	PAPER BOX 紙ボックス	PLASTIC TUBE プラスチックチューブ	SELECTIVE TIN (MATE)	SELECTIVE TIN (BRIGHT)	0.2	SPS	NATURAL	1565371-3
2	PAPER BOX 紙ボックス	PLASTIC TUBE プラスチックチューブ	SELECTIVE TIN (ALL SURFACES)	PRE-TIN	0.2	SPS	NATURAL	1565371-2
3	PLASTIC BOX プラスチックボックス	PLASTIC TUBE プラスチックチューブ	SELECTIVE TIN (ALL SURFACES)	PRE-TIN	0.2	SPS	NATURAL	1565371-1
OSOLETE	OUTER 外	INNER 内	SOLDERING SIDE ハンダ付け面	CONTACT SIDE 接触面				
	MARKING マーク	PACKING STYLE 梱包仕様	CONTACT FINISH 接触面仕上げ					

025/090 2ROW 26POSITION CAP ASSY Y-TYPE	025/090 2ROW 26POSITION CAP ASSY Y-TYPE	025/090 2ROW 26POSITION CAP ASSY Y-TYPE	025/090 2ROW 26POSITION CAP ASSY Y-TYPE
--------------------------------------------	--------------------------------------------	--------------------------------------------	--------------------------------------------