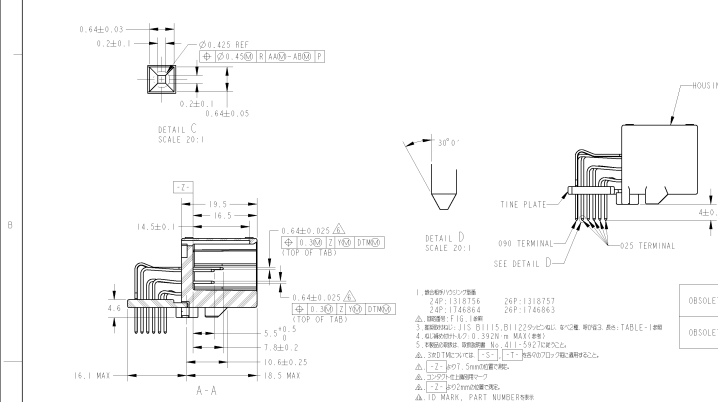
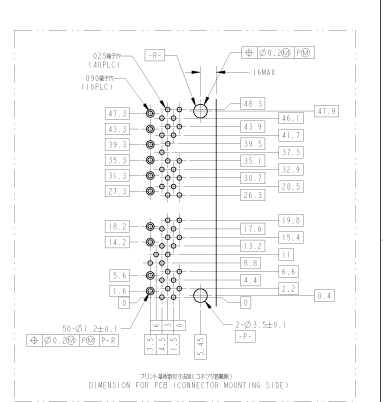
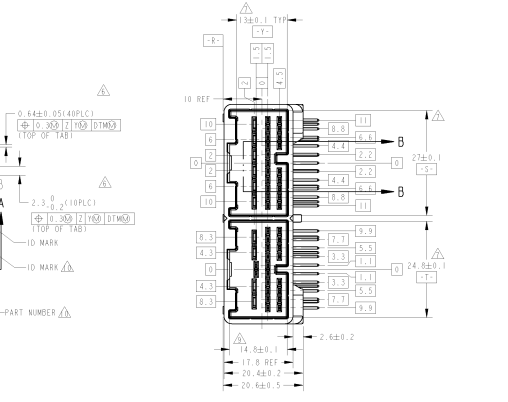
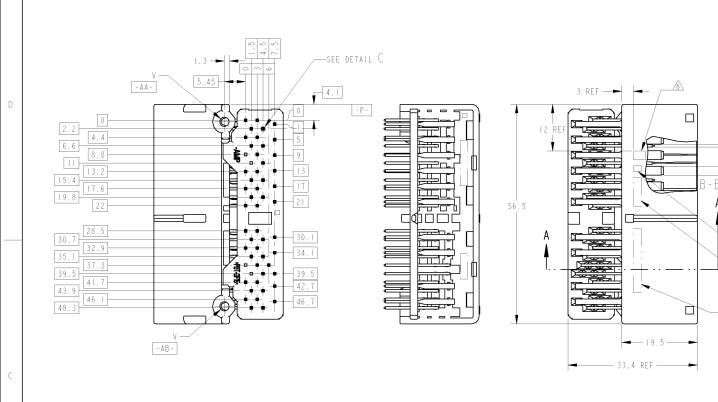
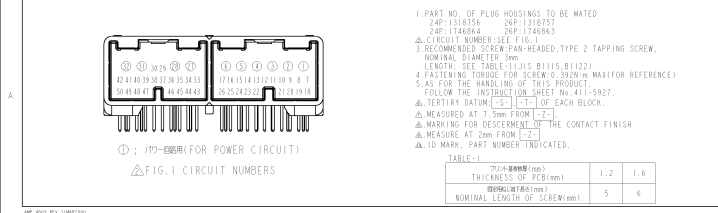


REV.	DATE	DESCRIPTION	BY	CHK	APP
1	2011.08.11	INITIAL DRAWING	Y. H.	Y. H.	
2	2011.08.11	REVISED	Y. H.	Y. H.	



NO.	DESCRIPTION	QTY	UNIT	REMARKS	DATE	BY	CHK	APP							
1	PLASTIC BONDING TUBE	62	17.43	∅2.4	PBT	SELECTIVE-TIN (MATTE)	-	1-6, 27, 28, 31, 32	7-26, 29, 30, 33-50	-	-	NATURAL (CASE)	NATURAL (LEAD)	6318750-3	
2	PLASTIC BONDING TUBE	9	15.68	∅2.63	SPS	SELECTIVE-TIN (MATTE)	-	1-4, 27, 28, 31, 32	9-14, 20-23, 25, 30, 31, 39-41, 44, 47	7, 8, 15-19, 24, 26, 33-36, 38, 42, 43, 45, 46, 48-50	-	-	BLACK (CASE)	BLACK (LEAD)	1-1318750-8
3	CATON BON PLASTIC TUBE	8	17.43	∅2.4	PBT	SELECTIVE-TIN (MATTE)	-	1-6, 27, 28, 31, 32	-	7-26, 29, 30, 33-50	-	-	NATURAL (CASE)	NATURAL (LEAD)	1-1318750-6
4	PLASTIC BONDING TUBE	8	17.43	∅2.4	PBT	SELECTIVE-TIN (MATTE)	-	1-6, 27, 28, 31, 32	-	7-26, 29, 30, 33-50	-	-	NATURAL (CASE)	NATURAL (LEAD)	1-1318750-5
5	PLASTIC BONDING TUBE	5	17.43	∅2.4	PBT	SELECTIVE-TIN (MATTE)	-	1-6, 27, 28, 31, 32	9-14, 20-23, 25, 29, 30, 31, 39-41, 44, 47	7, 8, 15-19, 24, 26, 33-36, 38, 42, 43, 45, 46, 48-50	-	-	NATURAL (CASE)	NATURAL (LEAD)	1-1318750-4
6	CATON BON PLASTIC TUBE	5	17.43	∅2.4	PBT	SELECTIVE-TIN (MATTE)	-	1-6, 27, 28, 31, 32	9-14, 20-23, 25, 29, 30, 31, 39-41, 44, 47	7, 8, 15-19, 24, 26, 33-36, 38, 42, 43, 45, 46, 48-50	-	-	NATURAL (CASE)	NATURAL (LEAD)	1-1318750-3
7	CATON BON PLASTIC TUBE	4	15.68	∅2.63	SPS	SELECTIVE-TIN (MATTE)	-	1-6, 27, 28, 31, 32	-	7-26, 29, 30, 33-50	-	-	BLACK (CASE)	NATURAL (LEAD)	1-1318750-2
8	PLASTIC BONDING TUBE	4	15.68	∅2.63	SPS	SELECTIVE-TIN (MATTE)	-	1-6, 27, 28, 31, 32	-	7-26, 29, 30, 33-50	-	-	BLACK (CASE)	NATURAL (LEAD)	1-1318750-1
9	CATON BON PLASTIC TUBE	4	15.68	∅2.4	PBT	SELECTIVE-TIN (MATTE)	-	1-6, 27, 28, 31, 32	7-26, 29, 30, 33-50	-	-	NATURAL (CASE)	NATURAL (LEAD)	1-1318750-0	
10	PLASTIC BONDING TUBE	17.43	∅2.4	PBT	SELECTIVE-TIN (MATTE)	-	1-6, 27, 28, 31, 32	29, 48	7-26, 30, 33-41, 49, 50	-	-	NATURAL (CASE)	NATURAL (LEAD)	1318750-9	
11	PLASTIC BONDING TUBE	3	17.43	∅2.4	PBT	SELECTIVE-TIN	-	-	9-14, 20-23, 25, 27, 28, 31, 32, 39-41, 44, 47	7, 8, 15-19, 24, 26, 33-36, 38, 42, 43, 45, 46, 48-50	-	-	NATURAL (CASE)	NATURAL (LEAD)	1318750-7
12	CATON BON PLASTIC TUBE	3	17.43	∅2.4	PBT	SELECTIVE-TIN	-	-	9-14, 20-23, 25, 27, 28, 31, 32, 39-41, 44, 47	7, 8, 15-19, 24, 26, 33-36, 38, 42, 43, 45, 46, 48-50	-	-	NATURAL (CASE)	NATURAL (LEAD)	1318750-6
13	PLASTIC BONDING TUBE	2	17.43	∅2.4	PBT	PRE-TIN	TIN LEAD	-	1-6, 27, 28, 31, 32	7-26, 29, 30, 33-50	-	-	NATURAL (CASE)	NATURAL (LEAD)	1318750-3
14	CATON BON PLASTIC TUBE	1	17.43	∅2.4	PBT	PRE-TIN	-	-	1-6, 27, 28, 31, 32	7-26, 29, 30, 33-50	-	-	NATURAL (CASE)	NATURAL (LEAD)	1318750-2
15	PLASTIC BONDING TUBE	1	17.43	∅2.4	PBT	PRE-TIN	-	-	1-6, 27, 28, 31, 32	7-26, 29, 30, 33-50	-	-	NATURAL (CASE)	NATURAL (LEAD)	1318750-1



PACKING STYLE	MARKING	WEIGHT	Y	HOUSING MATERIAL	CONTACT SIDE	TIN PLATE COLOR	HOUSING COLOR	PART NUMBER										
090 TERMINAL	025 TERMINAL	SEE DETAIL D	44.0 ± 0.4	30°	SELECTIVE GOLD	SELECTIVE-TIN (BRIGHT)	PRE-TIN	SELECTIVE GOLD	SELECTIVE-TIN (BRIGHT)	PRE-TIN	025 TAB SIGNAL	SEE TABLE	SEE TABLE	SEE TABLE	SEE TABLE	SEE TABLE	SEE TABLE	SEE TABLE

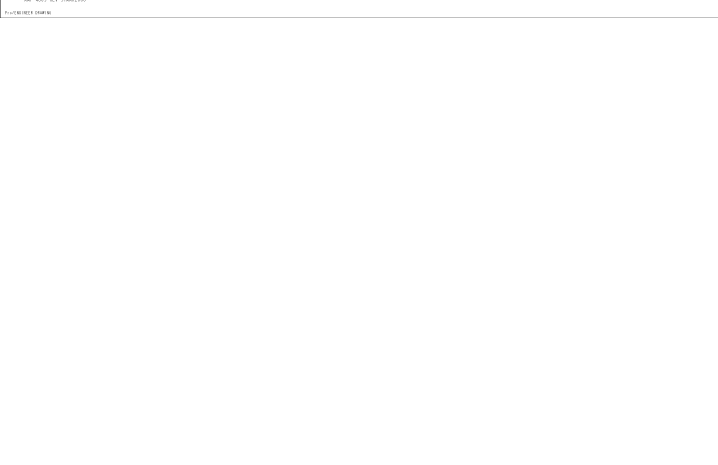


TABLE 1	THICKNESS OF PCB (mm)	1.2	1.6
THICKNESS OF PCB (mm)	1.2	1.6	
NOMINAL LENGTH OF SCREW (mm)	5	6	

4

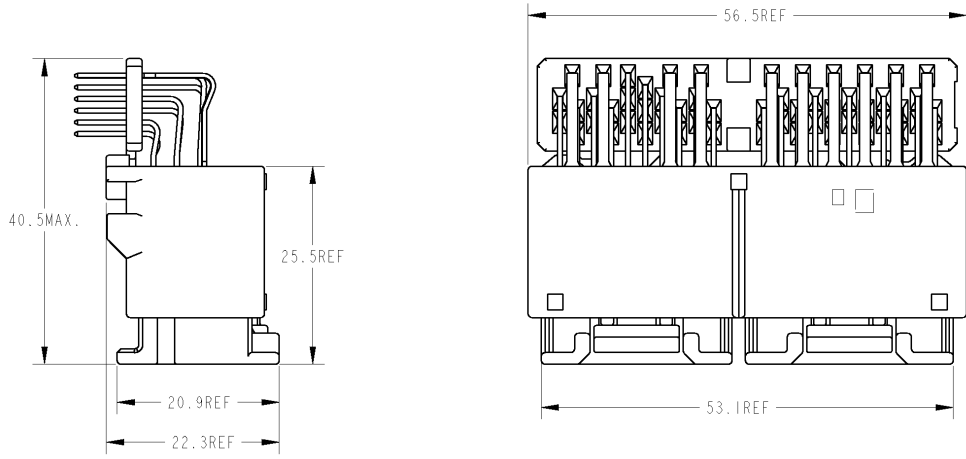
3

2

1

THIS DRAWING IS UNPUBLISHED. RELEASED FOR PUBLICATION 2000
 © COPYRIGHT 2000 BY TYCO ELECTRONICS CORPORATION. ALL RIGHTS RESERVED.

LOC		DIST		REVISIONS				
J		-		変更				
P	LTR	DESCRIPTION	ECN	DATE	DWN	APVD		
		SEE 1 OF 2						



CAP ASSEMBLY AND PLUG ASSEMBLY ENGAGEMENT DRAWING
 キャップアッセンブリ & プラグアッセンブリ 嵌合図

<small>THIS DRAWING IS A CONTROLLED DOCUMENT FOR TYCO ELECTRONICS CORPORATION. IT IS SUBJECT TO CHANGE AND THE CONTROLLING ENGINEERING ORGANIZATION SHOULD BE CONTACTED FOR THE LATEST REVISION.</small>		OWN 27APR2000 T. HAYASHI CHK N. SAI 27APR2000 APVD N. SAI 27APR2000	Tyco Electronics Kawasaki, Japan	Tyco Electronics AMP K.K. Kawasaki, Japan
DIMENSIONS: 単位: 英 mm	TOLERANCES UNLESS OTHERWISE SPECIFIED: 一般公差 ±0.3 0-PLC ±0.1 1-PLC ±0.1 2-PLC ±0.01 3-PLC ±0.001 4-PLC ±0.0001 ANGLES ±0.00°	PRODUCT SPEC 見当り APPLICATION SPEC 見当り SEE 1 OF 2	NAME 0257090 SERIES 50POSITION CAP ASSEMBLY	RESTRICTED TO --
MATERIAL 鋼 SEE 1 OF 2	FINISH 鋼 SEE 1 OF 2	WEIGHT 鋼 SEE 1 OF 2	SIZE A3 CAGE CODE 00779 DRAWING NO. C-1318750	CUSTOMER DRAWING
		SCALE 2:1	SHEET 2 OF 2	REV A1

AMP 1470-19 REV 31MAR2000
 P10/JENGINEER DRAWING